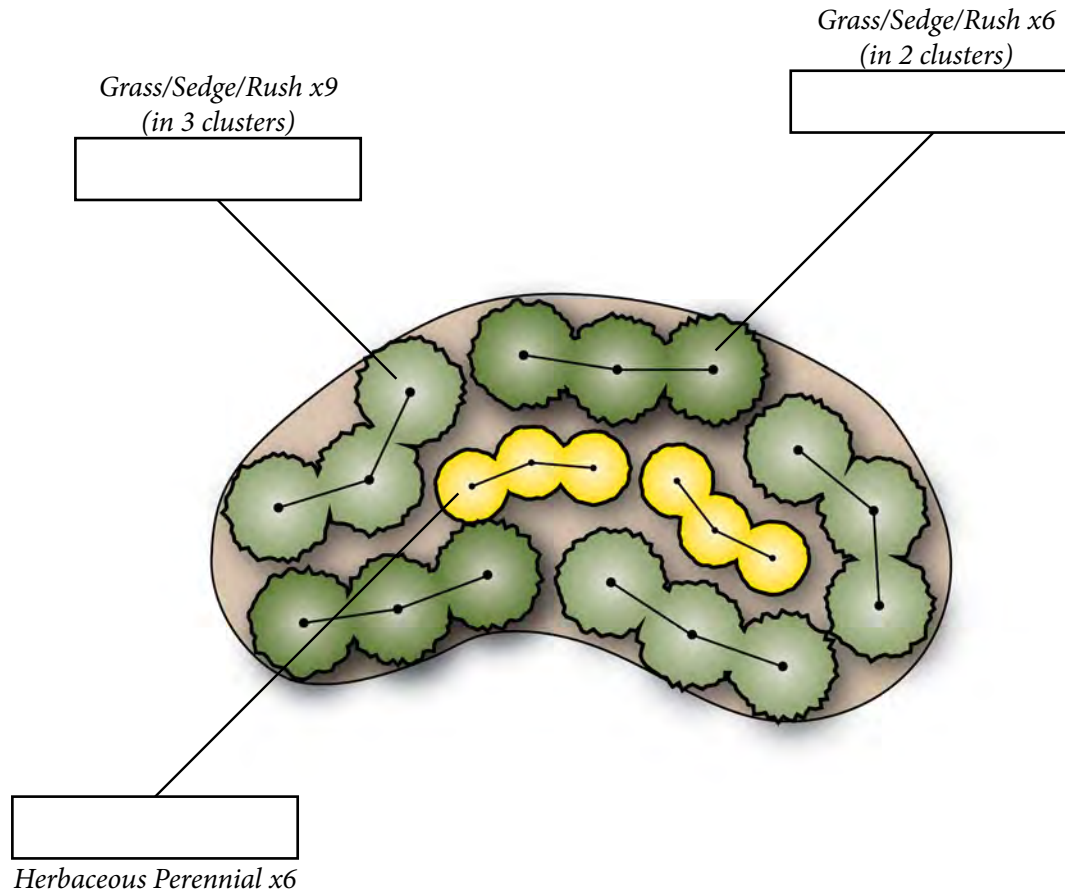


# Simple Meadow SupportScape- 60 square feet (contained in 11.5 x 6.5 foot area)

\* All designs courtesy of the BayScapes Program  
& Alliance of the Chesapeake Bay  
<https://www.allianceforthebay.org/>



Scale: 1 inch = 3 feet



## Average Spacing between Plants

Refer to plant nursery tags and adjust as needed

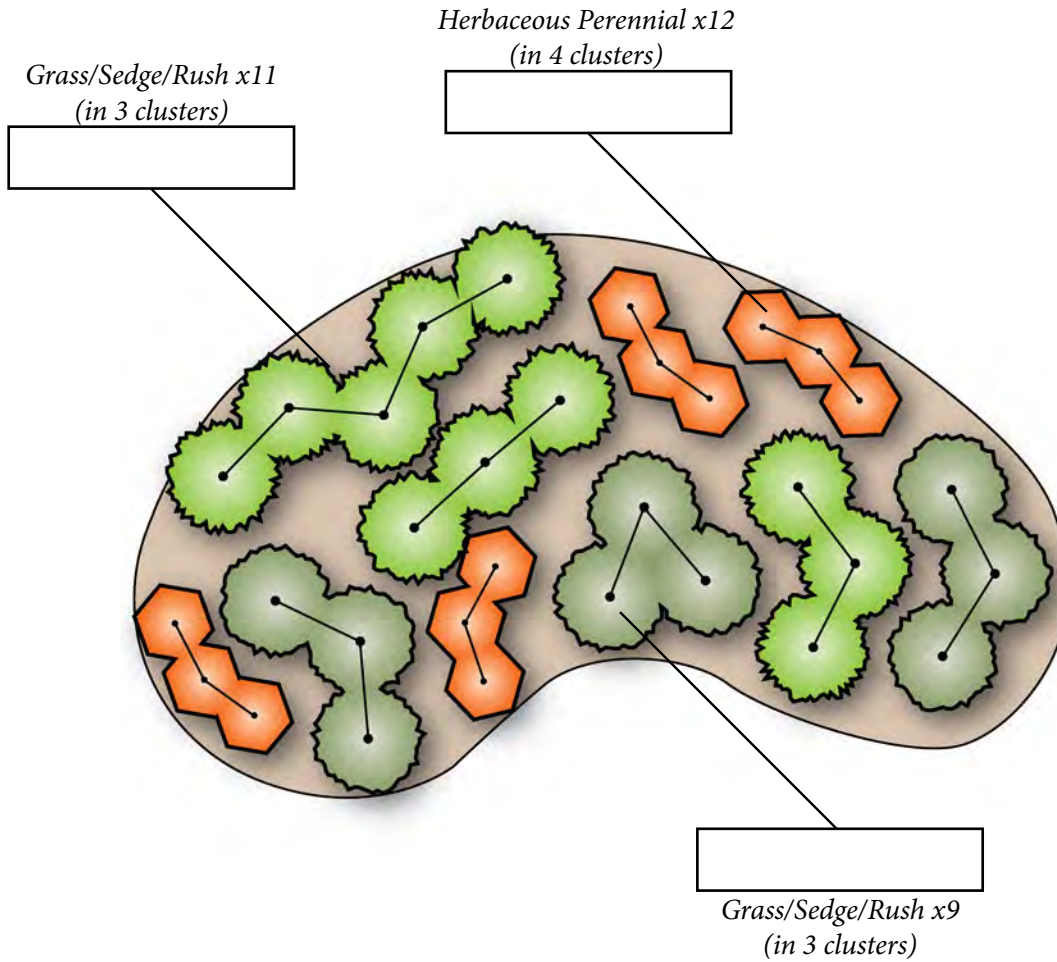
Shrubs = 30"	Grasses = 18"	Perennials = 9-12"
--------------	---------------	--------------------

2 cubic feet of mulch covers ~12 square feet of the garden

Consider adding a rain barrel to enhance your SupportScape



# Simple Meadow SupportScape - 90 square feet (contained in 14.5 x 9 foot area)



## Average Spacing between Plants

Refer to plant nursery tags and adjust as needed

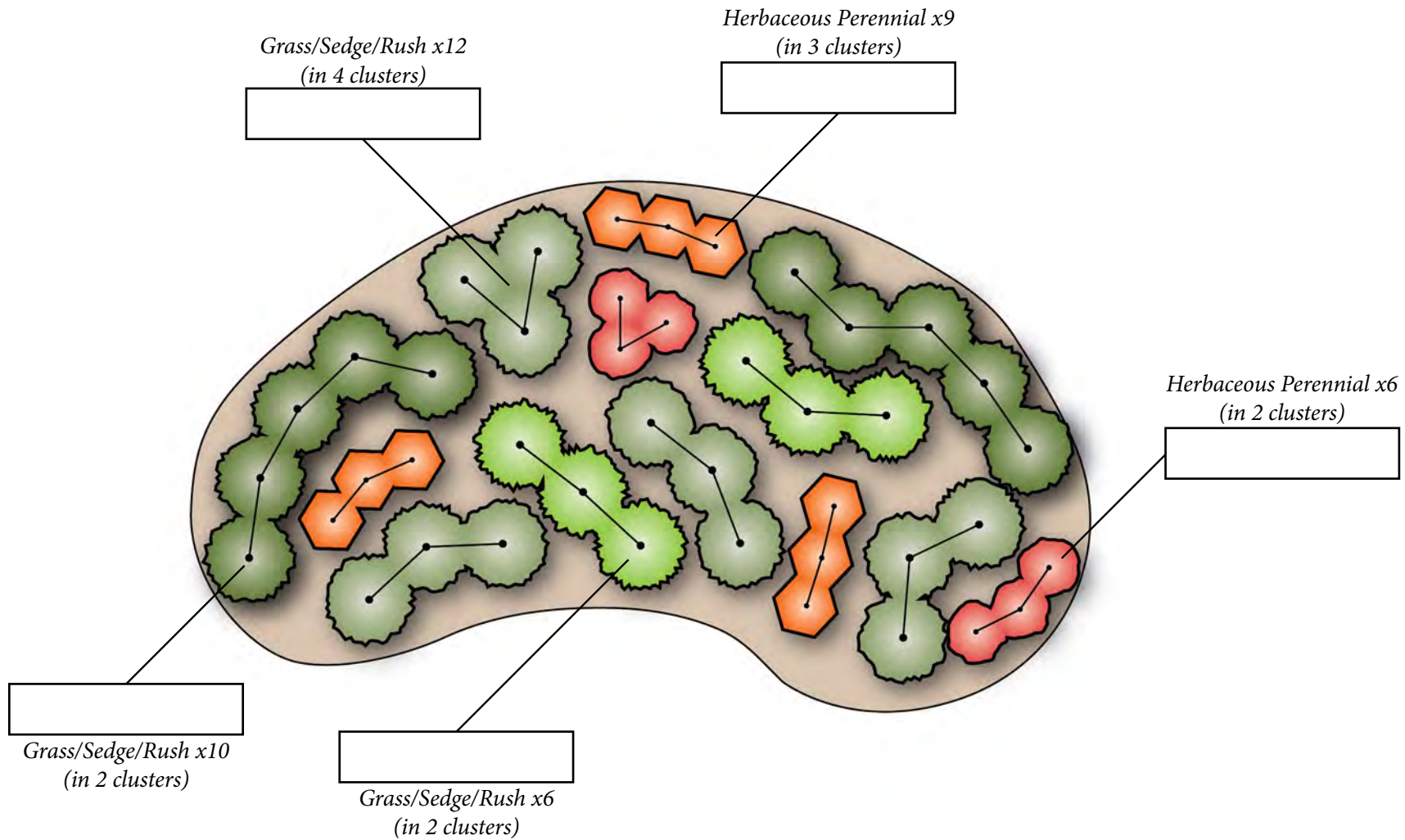
Shrubs = 30"	Grasses = 18"	Perennials = 9-12"
--------------	---------------	--------------------

2 cubic feet of mulch covers ~12 square feet of the garden

Consider adding a rain barrel to enhance your SupportScape



# Simple Meadow SupportScape - 120 square feet (contained in 17 x 10.5 foot area)



Scale: 1 inch = 3 feet



## Average Spacing between Plants

Refer to plant nursery tags and adjust as needed

Shrubs = 30"	Grasses = 18"	Perennials = 9-12"
--------------	---------------	--------------------

2 cubic feet of mulch covers ~12 square feet of the garden

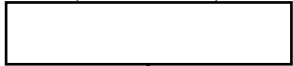
Consider adding a rain barrel to enhance your SupportScape



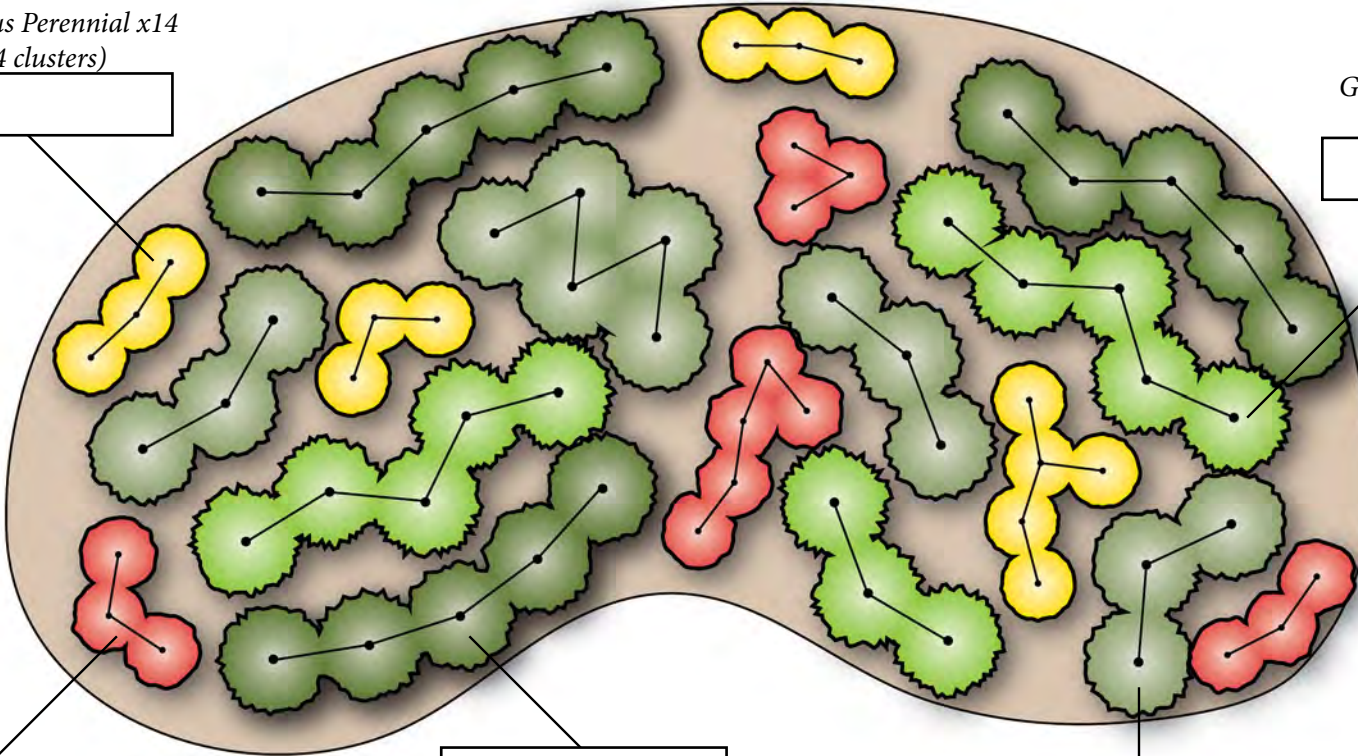
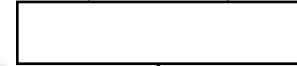


# Simple Meadow SupportScape - 180 square feet (contained in 21 x 12.5 foot area)

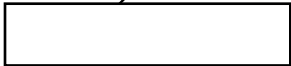
Herbaceous Perennial x14  
(in 4 clusters)



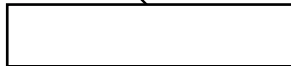
Grass/Sedge/Rush x13  
(in 3 clusters)



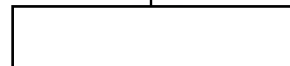
Herbaceous Perennial x14  
(in 4 clusters)



Grass/Sedge/Rush x15  
(in 3 clusters)



Grass/Sedge/Rush x14  
(in 4 clusters)



Scale: 1 inch = 3 feet



## Average Spacing between Plants

Refer to plant nursery tags and adjust as needed

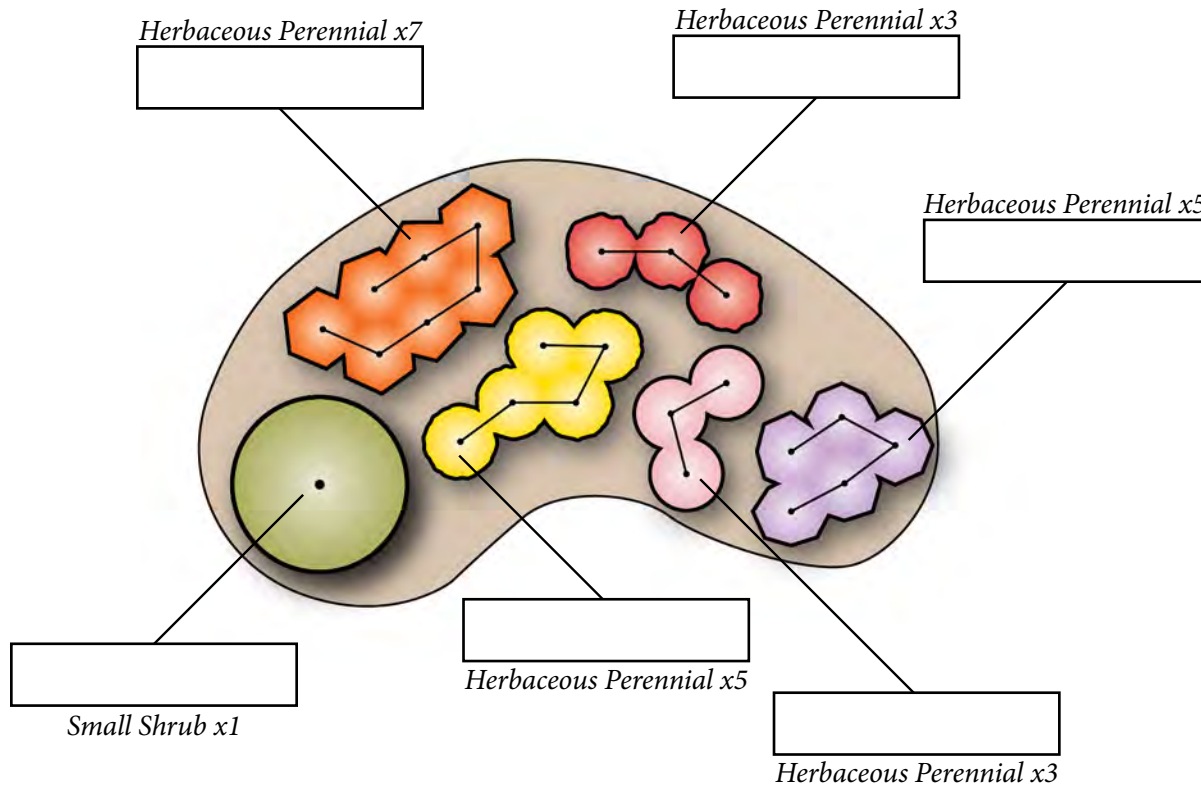
Shrubs = 30"	Grasses = 18"	Perennials = 9-12"
--------------	---------------	--------------------

2 cubic feet of mulch covers ~12 square feet of the garden

Consider adding a rain barrel to enhance your SupportScape



# Pollinator Garden SupportScape - 60 square feet (contained in 11.5 x 6.5 foot area)



Scale: 1 inch = 3 feet



## Average Spacing between Plants

Refer to plant nursery tags and adjust as needed

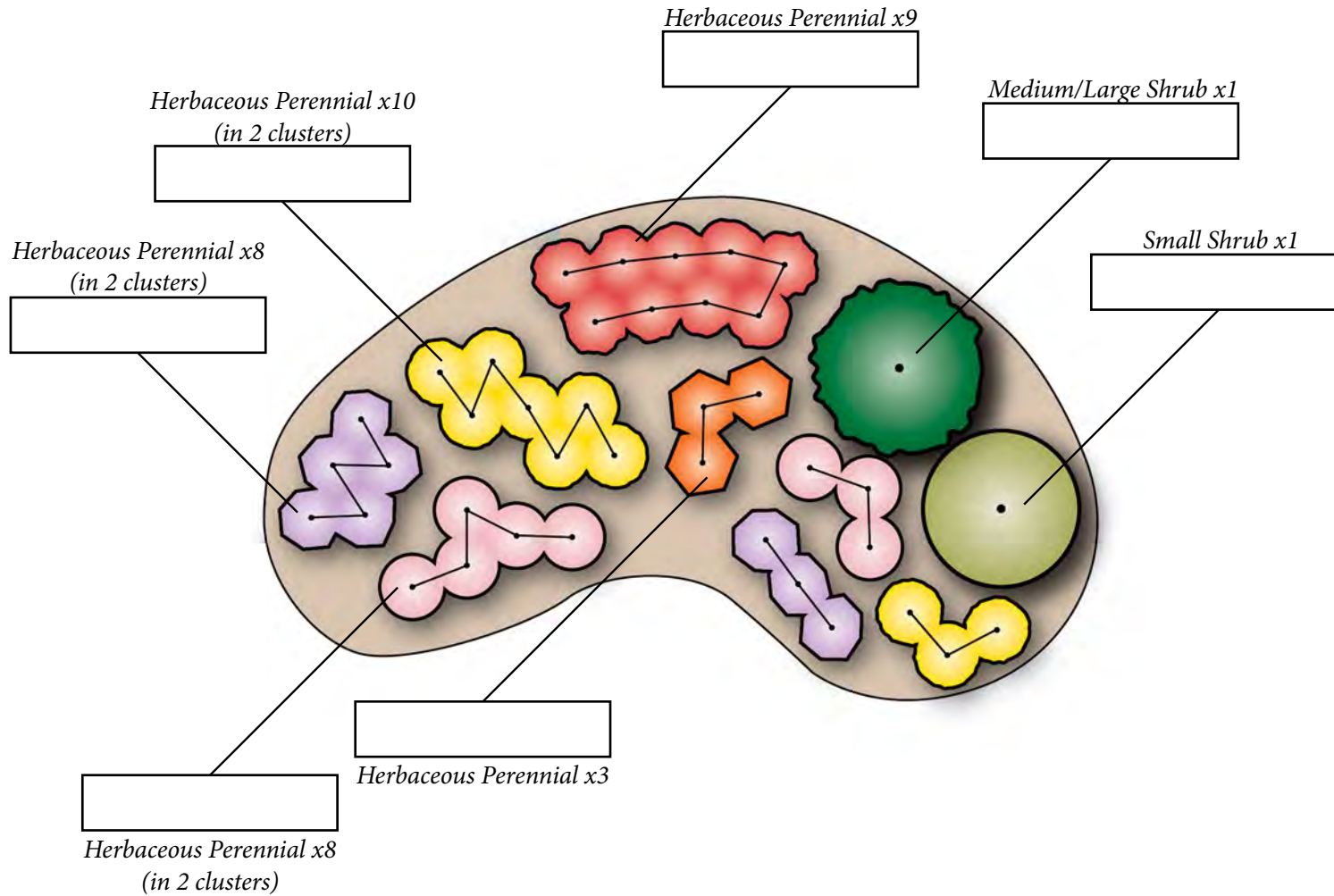
Shrubs = 30"	Grasses = 18"	Perennials = 9-12"
--------------	---------------	--------------------

2 cubic feet of mulch covers ~12 square feet of the garden

Consider adding a rain barrel to enhance your SupportScape



# Pollinator Garden SupportScape - 90 square feet (contained in 14.5 x 9 foot area)



Scale: 1 inch = 3 feet



## Average Spacing between Plants

Refer to plant nursery tags and adjust as needed

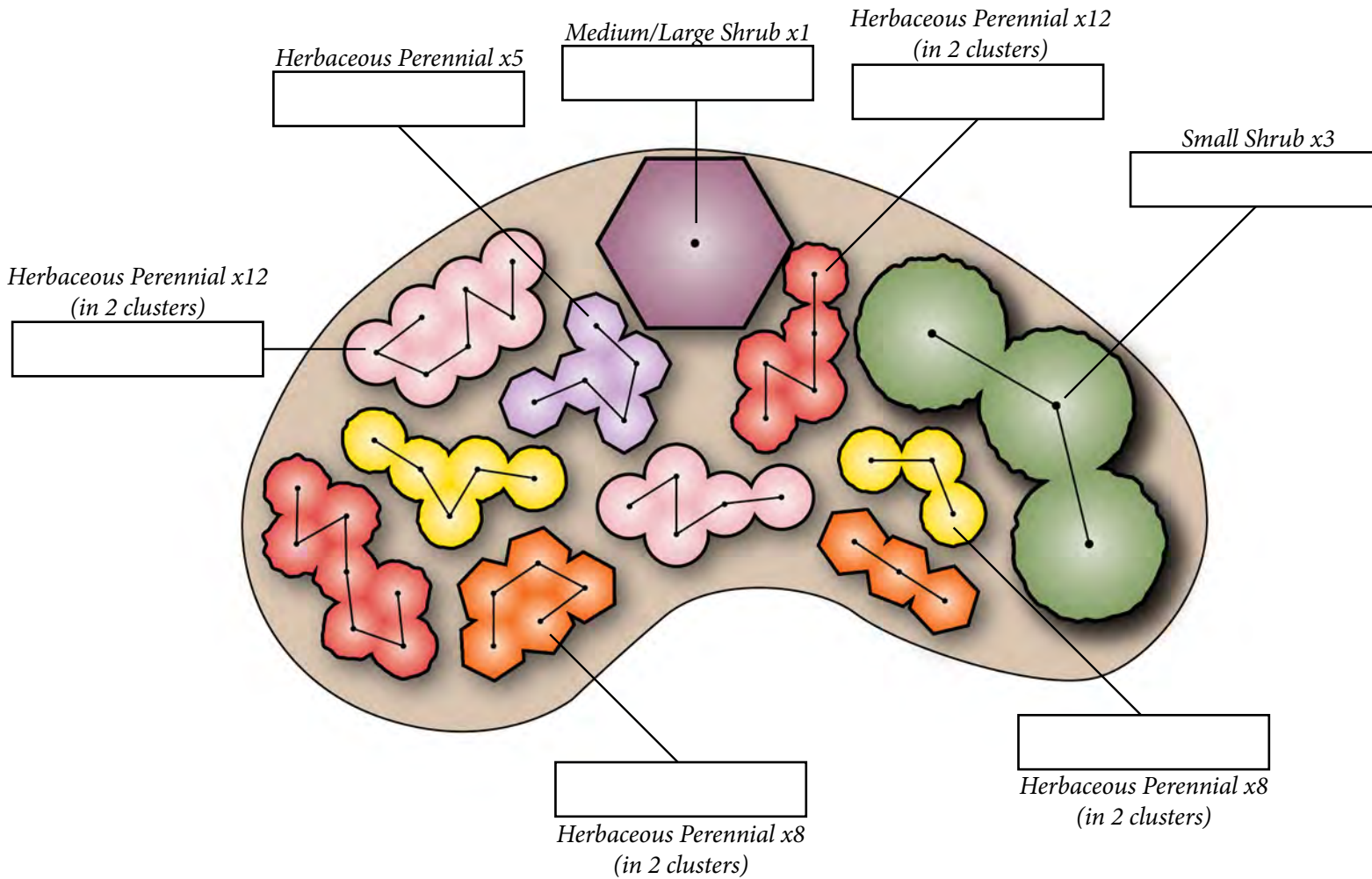
Shrubs = 30"	Grasses = 18"	Perennials = 9-12"
--------------	---------------	--------------------

2 cubic feet of mulch covers ~12 square feet of the garden

Consider adding a rain barrel to enhance your SupportScape



# Pollinator Garden SupportScape - 120 square feet (contained in 17 x 10.5 foot area)



Scale: 1 inch = 3 feet



## Average Spacing between Plants

Refer to plant nursery tags and adjust as needed

Shrubs = 30"	Grasses = 18"	Perennials = 9-12"
--------------	---------------	--------------------

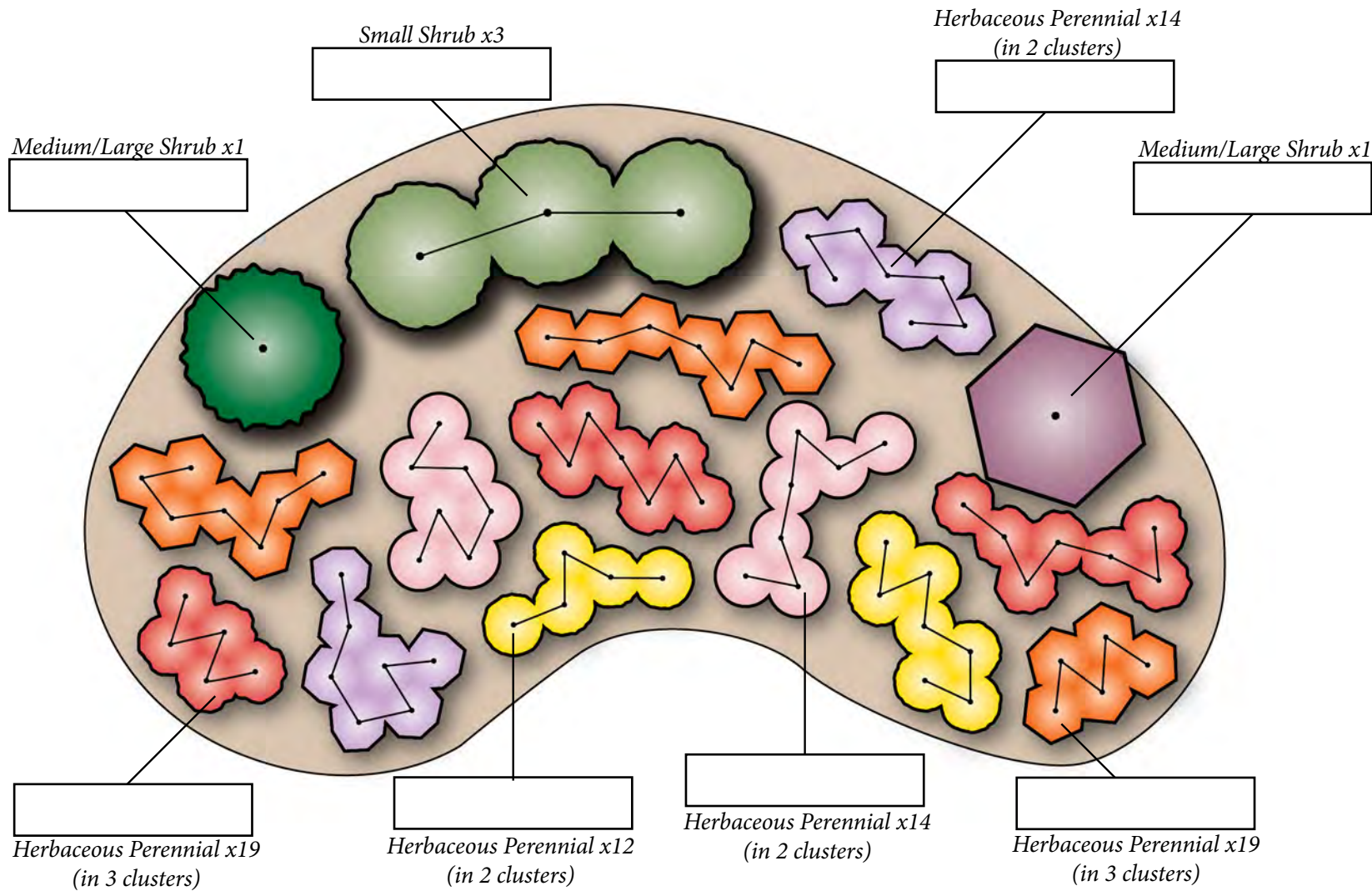
2 cubic feet of mulch covers ~12 square feet of the garden

Consider adding a rain barrel to enhance your SupportScape

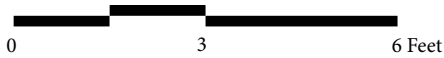




# Pollinator Garden SupportScape - 180 square feet (contained in 21 x 12.5 foot area)



Scale: 1 inch = 3 feet



Average Spacing between Plants  
Refer to plant nursery tags and adjust as needed

Shrubs = 30"	Grasses = 18"	Perennials = 9-12"
--------------	---------------	--------------------

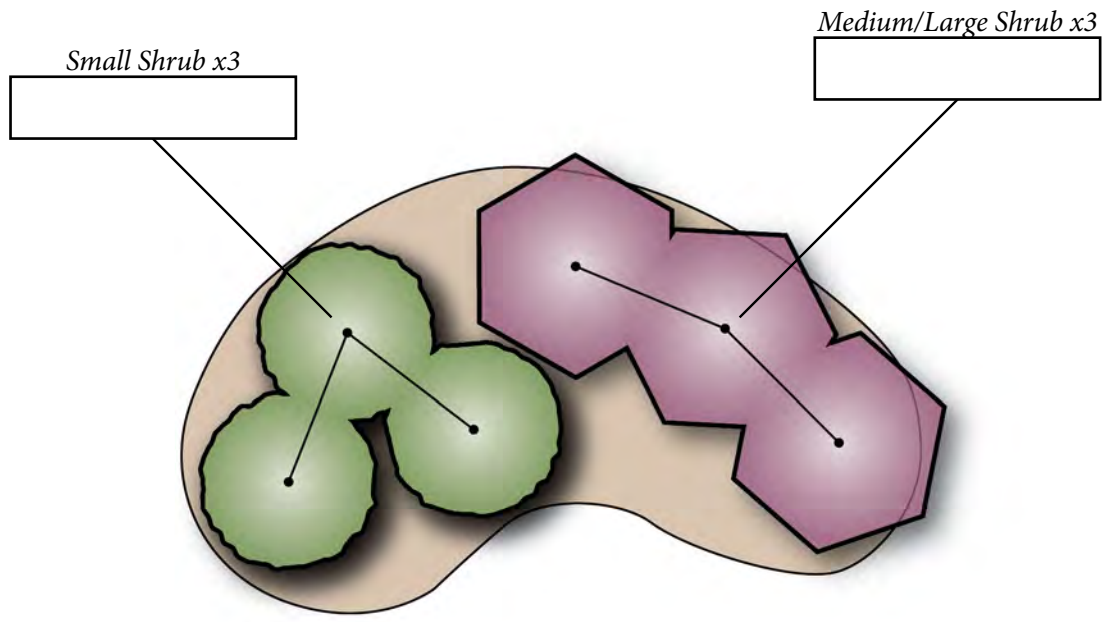
2 cubic feet of mulch covers ~12 square feet of the garden

Consider adding a rain barrel to enhance your SupportScape





# Woody Screen SupportScape - 60 square feet (contained in 11.5 x 6.5 foot area)



Scale: 1 inch = 3 feet



Average Spacing between Plants  
*Refer to plant nursery tags and adjust as needed*

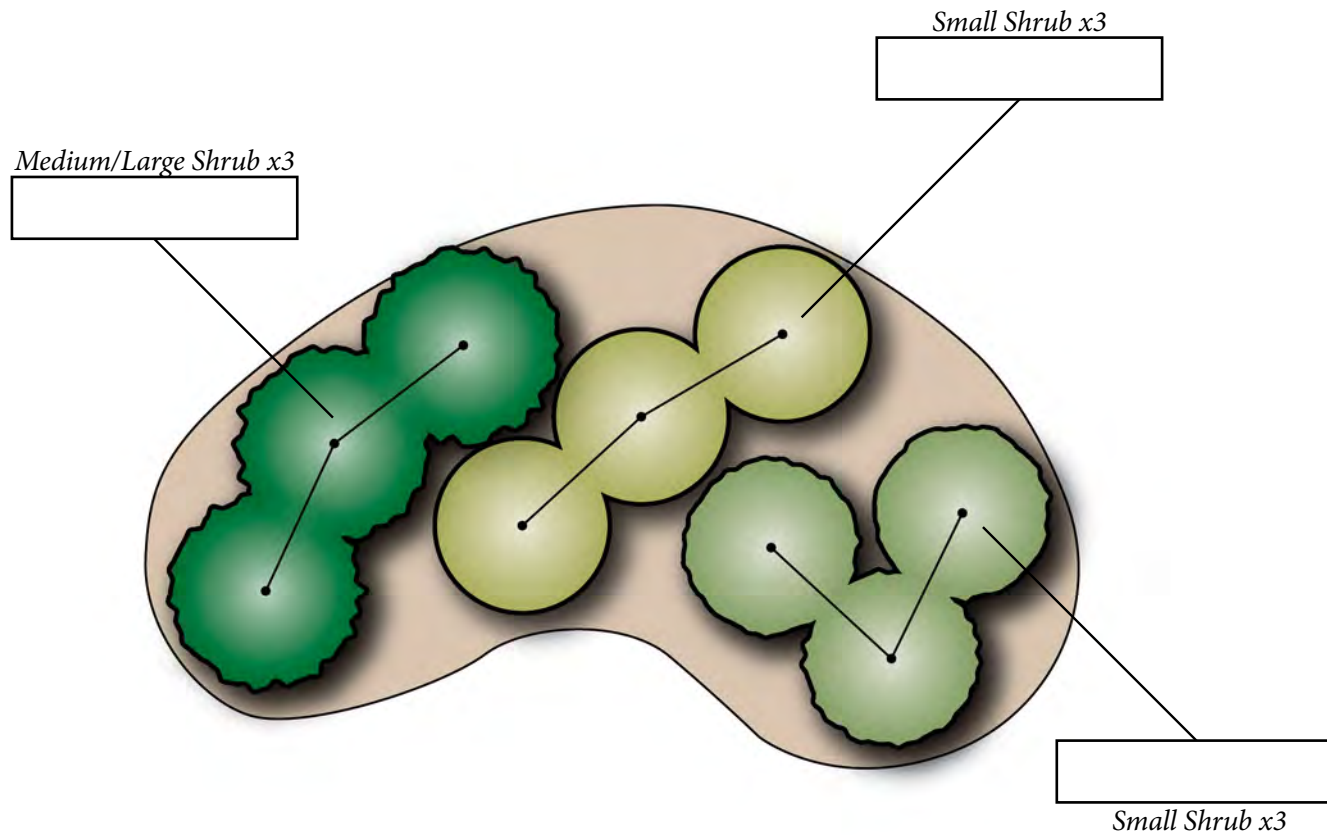
Shrubs = 30"	Grasses = 18"	Perennials = 9-12"
--------------	---------------	--------------------

2 cubic feet of mulch covers ~12 square feet of the garden

Consider adding a rain barrel to enhance your SupportScape



# Woody Screen SupportScape - 90 square feet (contained in 14.5 x 9 foot area)



Scale: 1 inch = 3 feet



## Average Spacing between Plants

Refer to plant nursery tags and adjust as needed

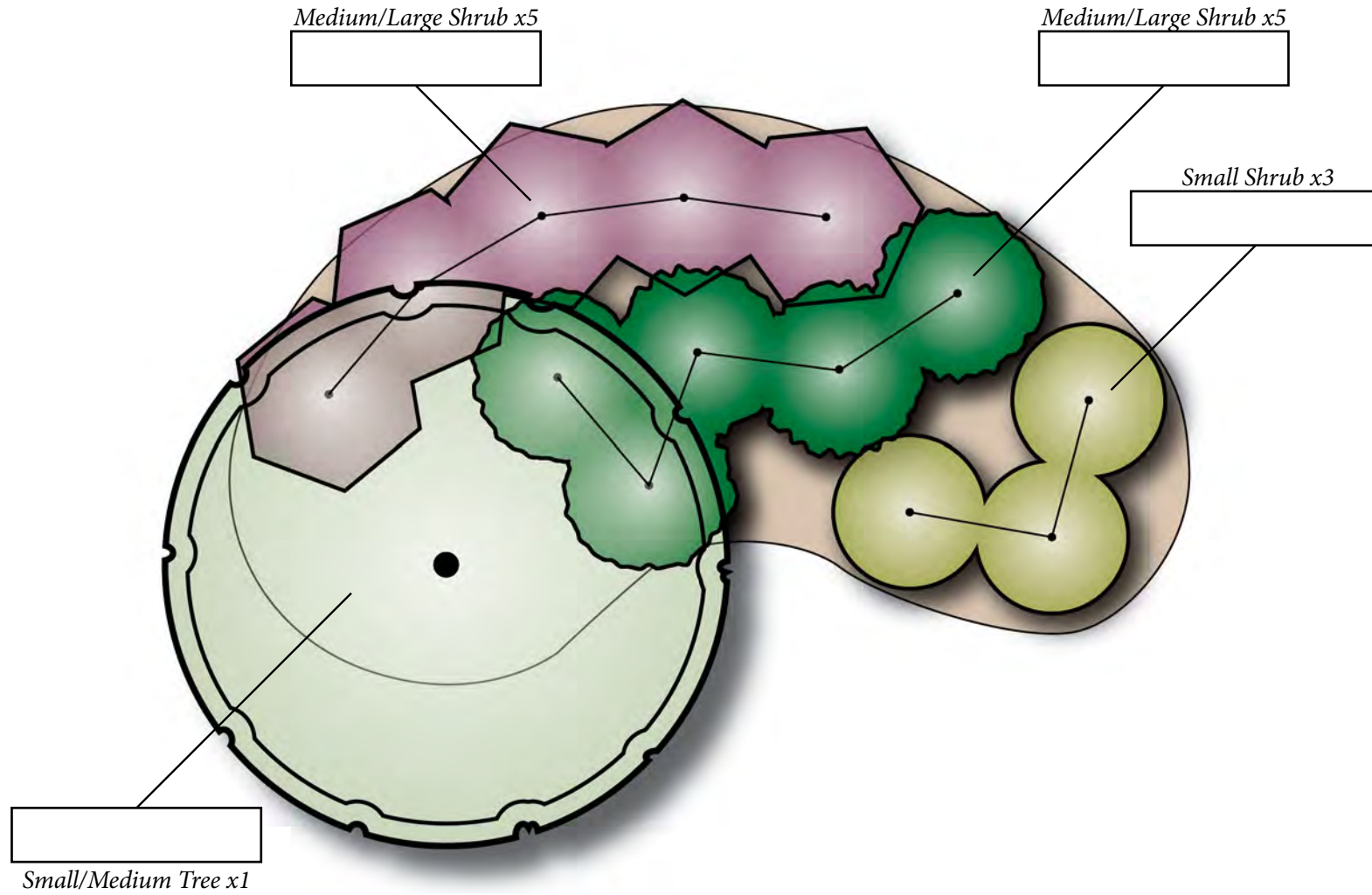
Shrubs = 30"	Grasses = 18"	Perennials = 9-12"
--------------	---------------	--------------------

2 cubic feet of mulch covers ~12 square feet of the garden

Consider adding a rain barrel to enhance your SupportScape



# Woody Screen SupportScape - 120 square feet (contained in 17 x 10.5 foot area)



Scale: 1 inch = 3 feet 0 3 6 Feet

Average Spacing between Plants  
 Refer to plant nursery tags and adjust as needed

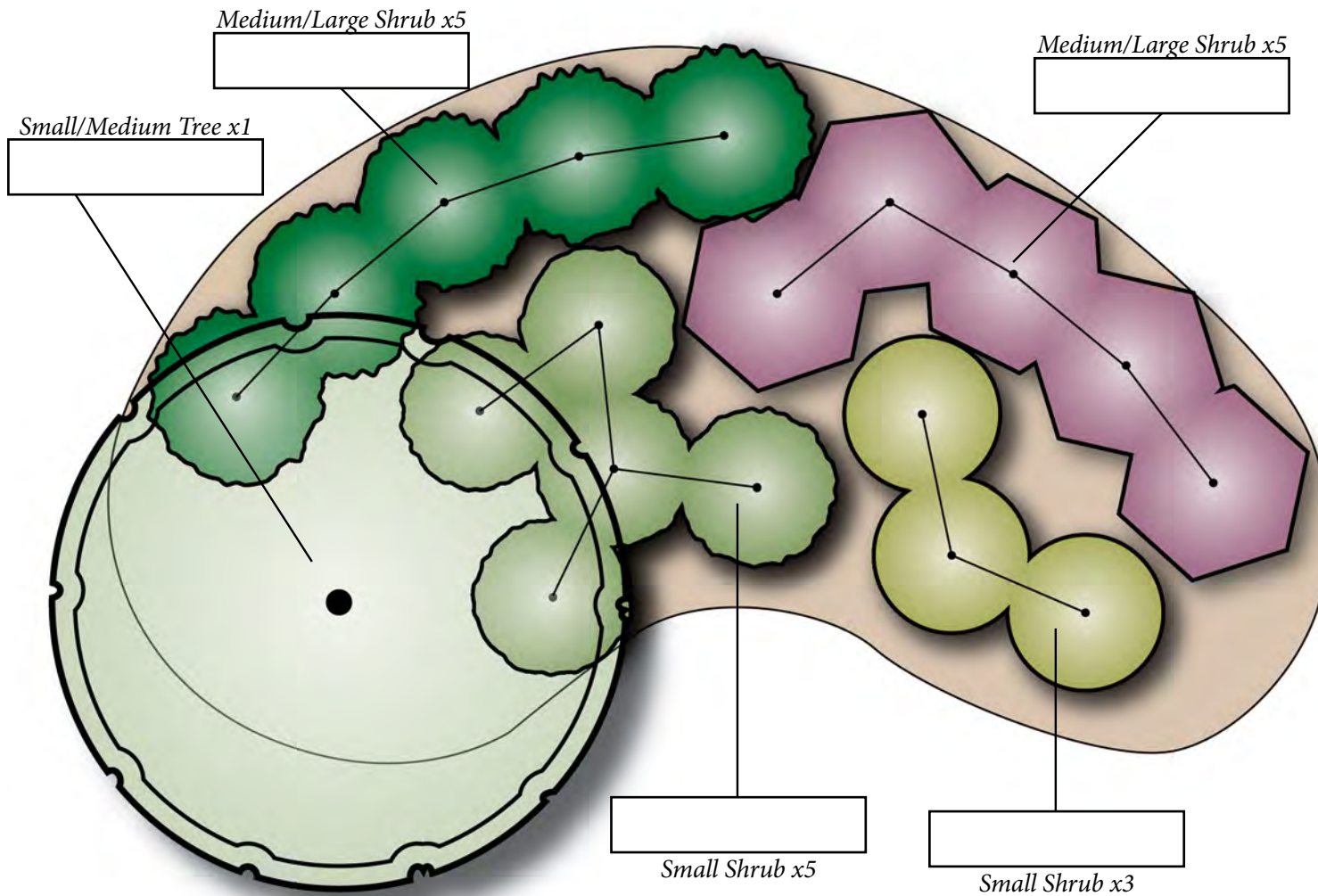
Shrubs = 30"	Grasses = 18"	Perennials = 9-12"
--------------	---------------	--------------------

2 cubic feet of mulch covers ~12 square feet of the garden

Consider adding a rain barrel to enhance your SupportScape



# Woody Screen SupportScape - 180 square feet (contained in 21 x 12.5 foot area)



Scale: 1 inch = 3 feet



## Average Spacing between Plants

Refer to plant nursery tags and adjust as needed

Shrubs = 30"	Grasses = 18"	Perennials = 9-12"
--------------	---------------	--------------------

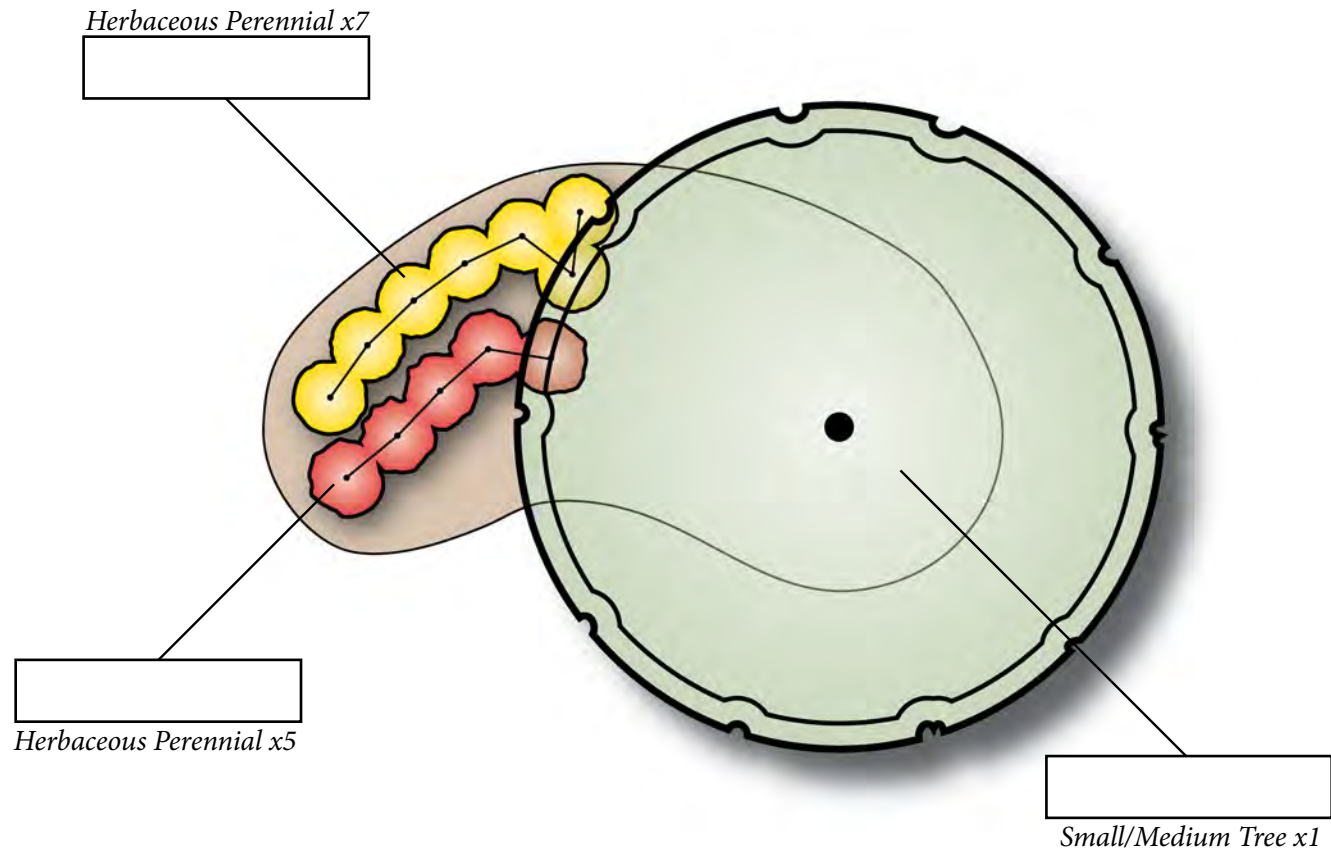
2 cubic feet of mulch covers ~12 square feet of the garden

Consider adding a rain barrel to enhance your SupportScape





# Flowering Tree Focal Point SupportScape - 60 square feet (contained in 11.5 x 6.5 foot area)



Scale: 1 inch = 3 feet



## Average Spacing between Plants

*Refer to plant nursery tags and adjust as needed*

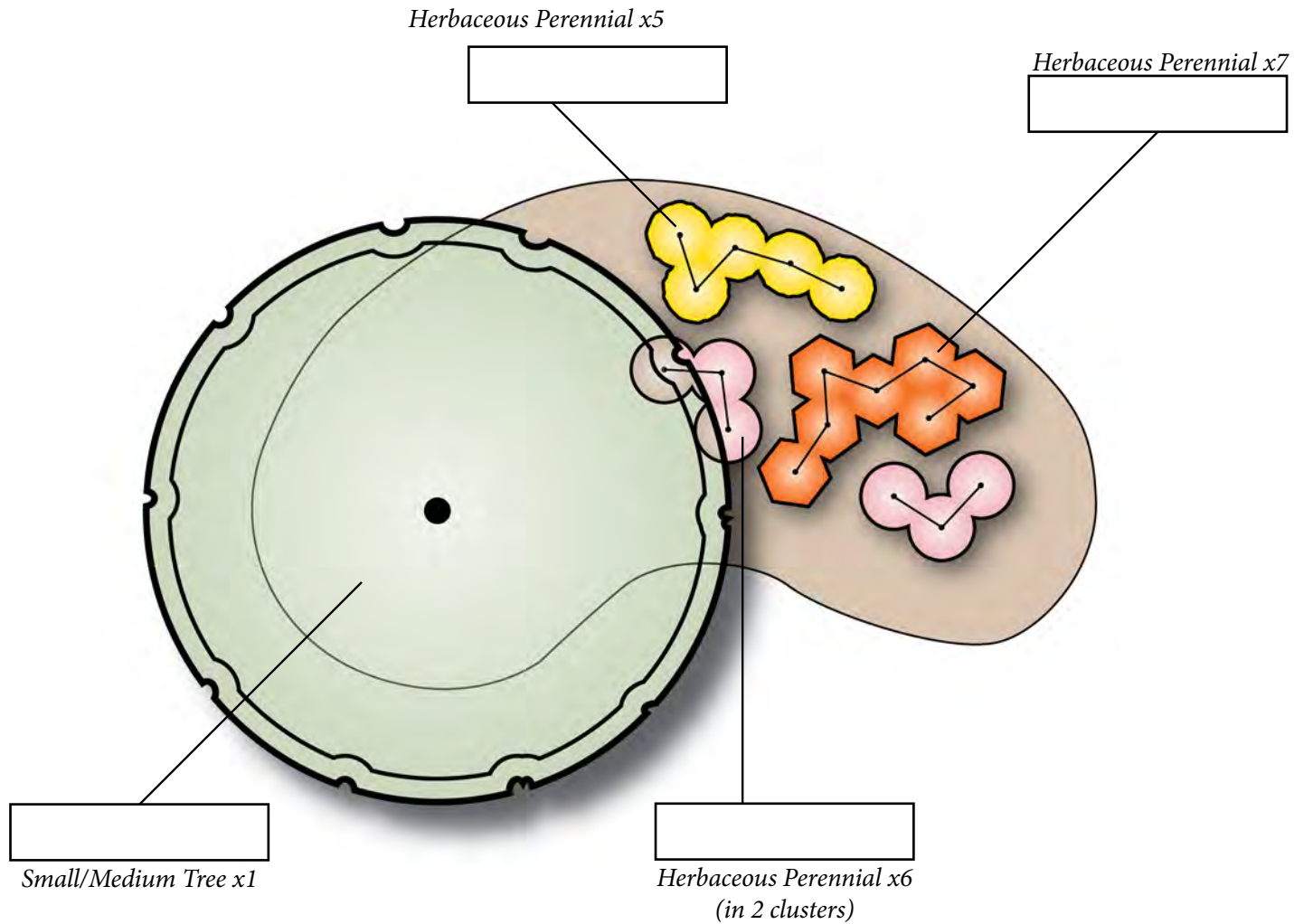
Shrubs = 30"	Grasses = 18"	Perennials = 9-12"
--------------	---------------	--------------------

2 cubic feet of mulch covers ~12 square feet of the garden

Consider adding a rain barrel to enhance your SupportScape



# Flowering Tree Focal Point SupportScape - 90 square feet (contained in 14.5 x 9 foot area)



Scale: 1 inch = 3 feet



## Average Spacing between Plants

Refer to plant nursery tags and adjust as needed

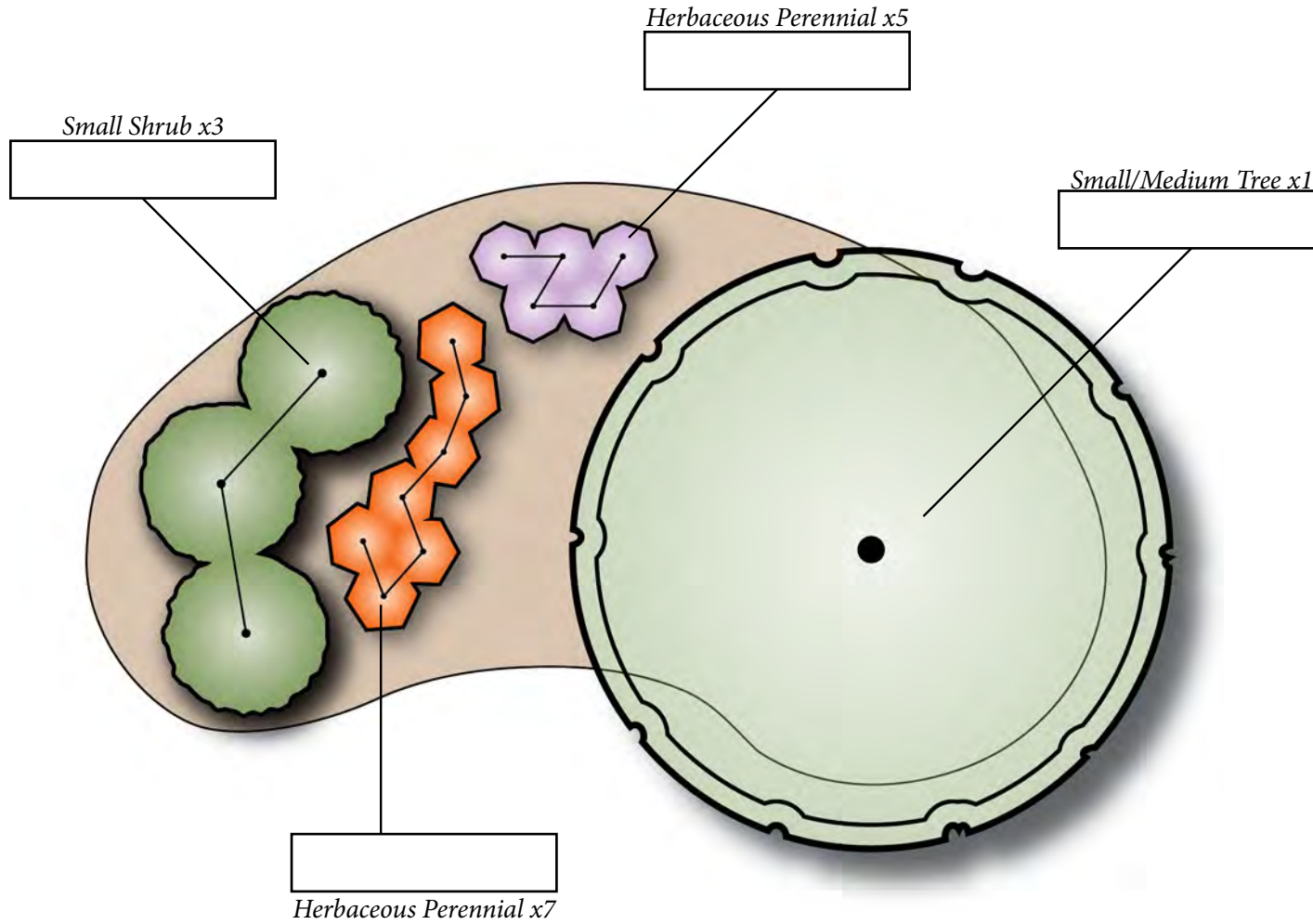
Shrubs = 30"	Grasses = 18"	Perennials = 9-12"
--------------	---------------	--------------------

2 cubic feet of mulch covers ~12 square feet of the garden

Consider adding a rain barrel to enhance your SupportScape



# Flowering Tree Focal Point SupportScape - 120 square feet (contained in 17 x 10.5 foot area)



Scale: 1 inch = 3 feet



## Average Spacing between Plants

Refer to plant nursery tags and adjust as needed

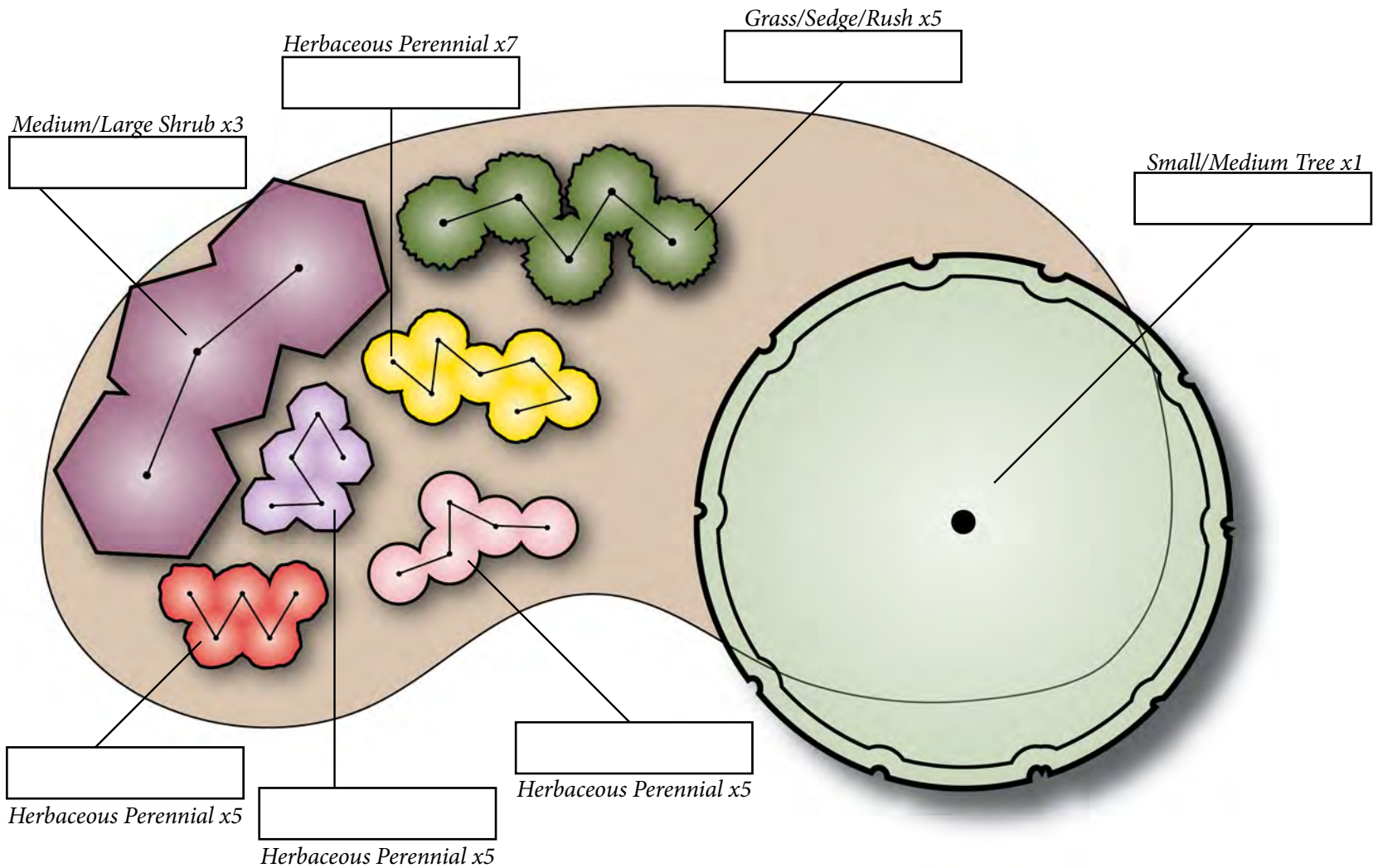
Shrubs = 30"	Grasses = 18"	Perennials = 9-12"
--------------	---------------	--------------------

2 cubic feet of mulch covers ~12 square feet of the garden

Consider adding a rain barrel to enhance your SupportScape



# Flowering Tree Focal Point SupportScape - 180 square feet (contained in 21 x 12.5 foot area)



Scale: 1 inch = 3 feet



Average Spacing between Plants  
Refer to plant nursery tags and adjust as needed

Shrubs = 30"	Grasses = 18"	Perennials = 9-12"
--------------	---------------	--------------------

2 cubic feet of mulch covers ~12 square feet of the garden

Consider adding a rain barrel to enhance your SupportScape





# Typical Kidney shaped SupportScape - 60 square feet (contained in 11.5 x 6.5 foot area)



Scale: 1 inch = 3 feet



0 3 6 Feet

Average Spacing between Plants  
*Refer to plant nursery tags and adjust as needed*

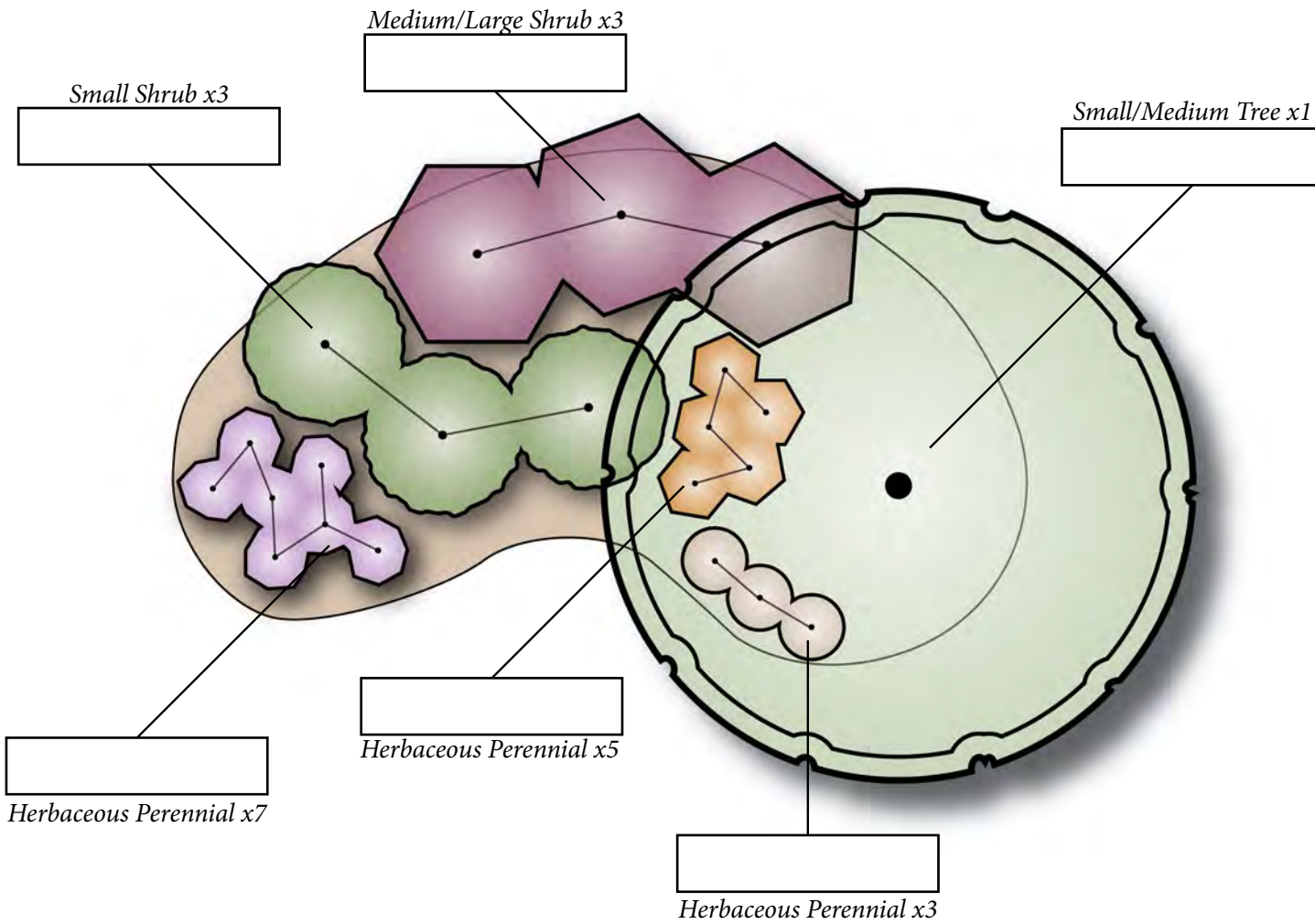
Shrubs = 30"	Grasses = 18"	Perennials = 9-12"
--------------	---------------	--------------------

2 cubic feet of mulch covers ~12 square feet of the garden

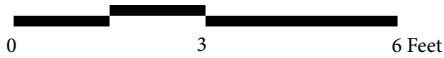
Consider adding a rain barrel to enhance your SupportScape



**Typical Kidney shaped SupportScape - 90 square feet (contained in 14.5 x 9 foot area)**



Scale: 1 inch = 3 feet



Average Spacing between Plants  
Refer to plant nursery tags and adjust as needed

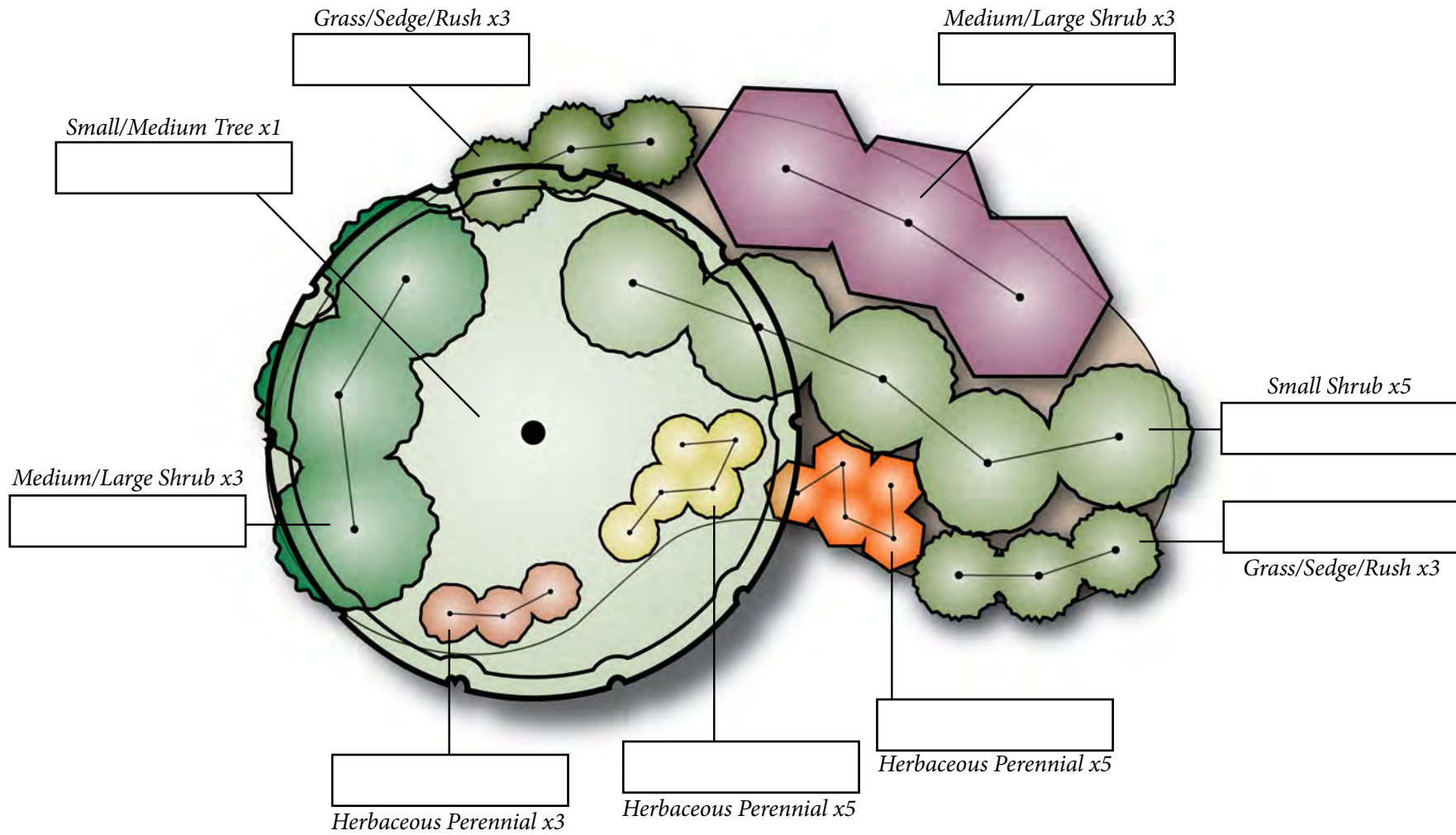
Shrubs = 30"	Grasses = 18"	Perennials = 9-12"
--------------	---------------	--------------------

2 cubic feet of mulch covers ~12 square feet of the garden

Consider adding a rain barrel to enhance your SupportScape



# Typical Kidney shaped SupportScape - 120 square feet (contained in 17 x 10.5 foot area)



Scale: 1 inch = 3 feet 0 3 6 Feet

Average Spacing between Plants  
Refer to plant nursery tags and adjust as needed

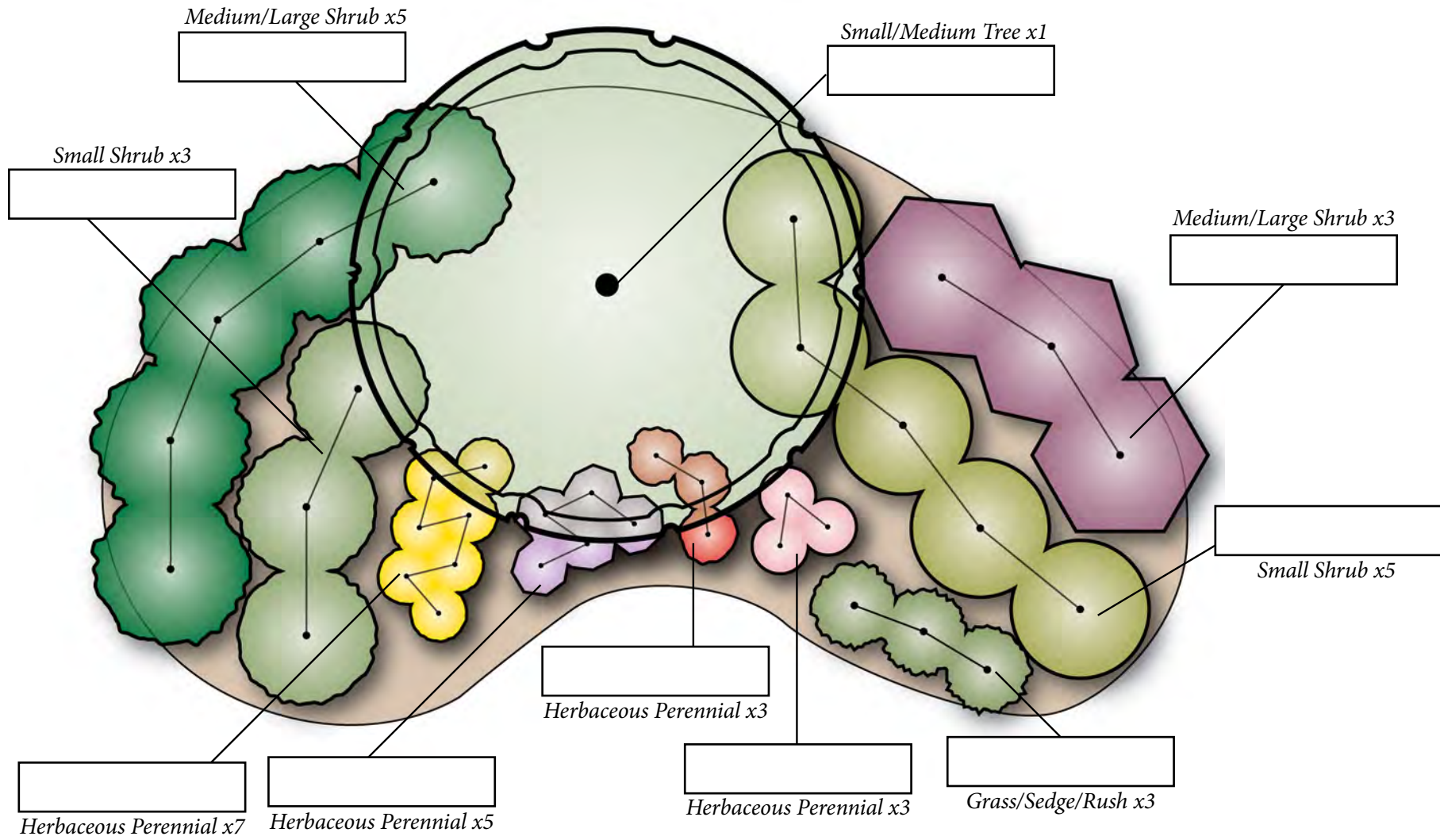
Shrubs = 30"	Grasses = 18"	Perennials = 9-12"
--------------	---------------	--------------------

2 cubic feet of mulch covers ~12 square feet of the garden

Consider adding a rain barrel to enhance your SupportScape



# Typical Kidney shaped SupportScape - 180 square feet (contained in 21 x 12.5 foot area)



Scale: 1 inch = 3 feet



Average Spacing between Plants  
Refer to plant nursery tags and adjust as needed

Shrubs = 30"	Grasses = 18"	Perennials = 9-12"
--------------	---------------	--------------------

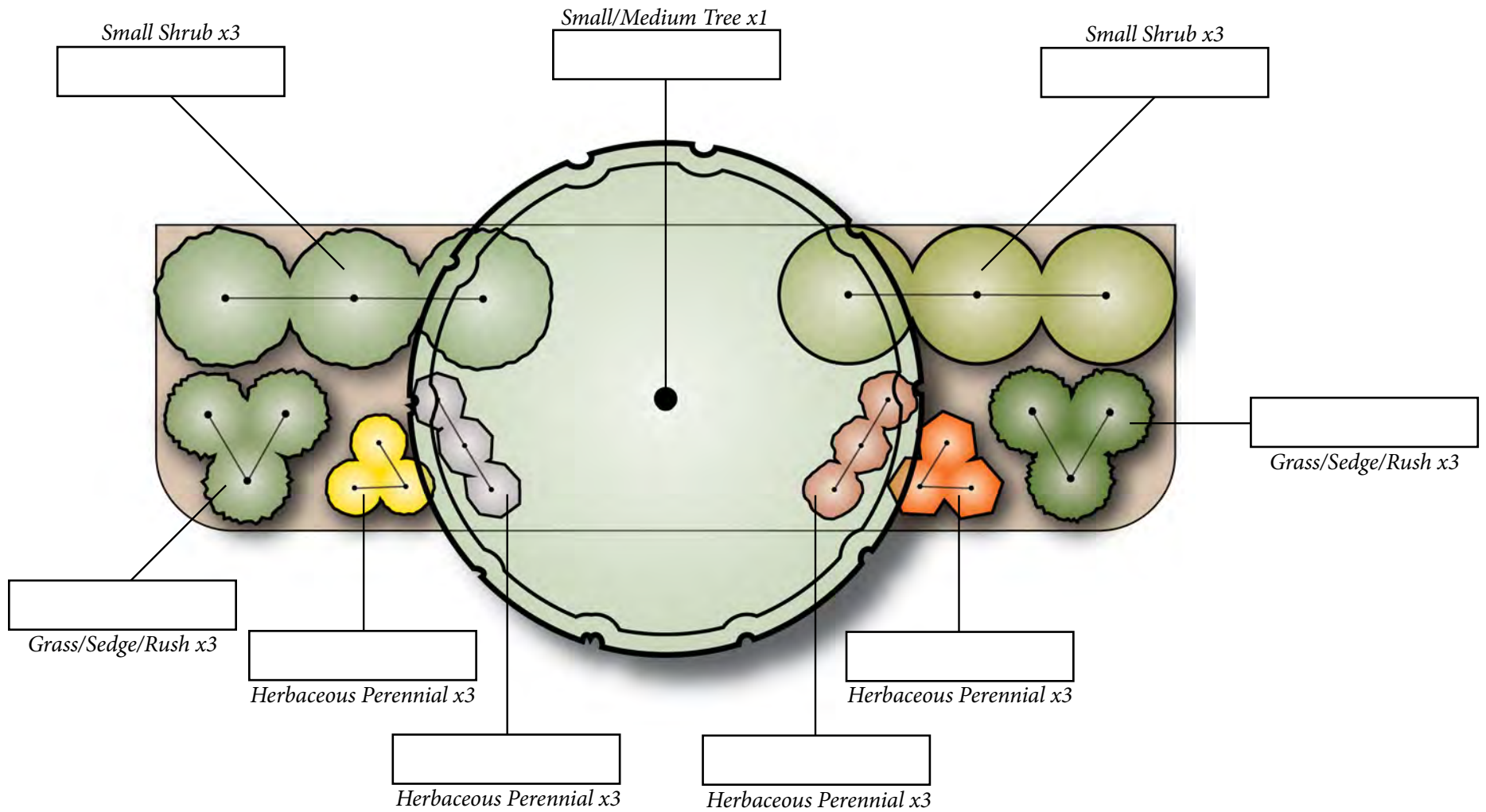
2 cubic feet of mulch covers ~12 square feet of the garden

Consider adding a rain barrel to enhance your SupportScape





# Typical Edge SupportScape - 120 square feet (contained in 20 x 6 foot area)



Scale: 1 inch = 3 feet



## Average Spacing between Plants

Refer to plant nursery tags and adjust as needed

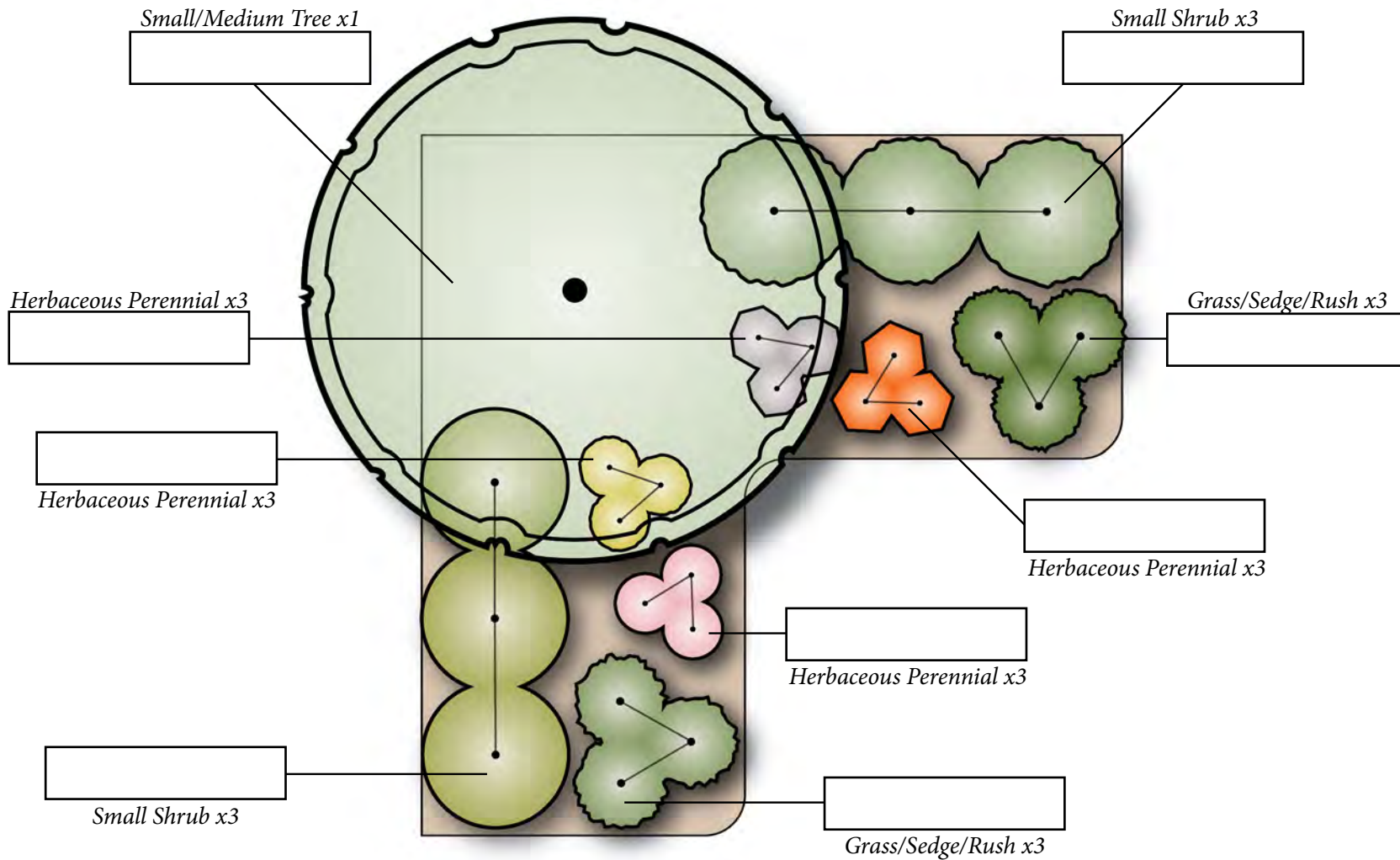
Shrubs = 30"	Grasses = 18"	Perennials = 9-12"
--------------	---------------	--------------------

2 cubic feet of mulch covers ~12 square feet of the garden

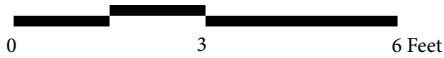
Consider adding a rain barrel to enhance your SupportScape



# Typical Corner SupportScape - 120 square feet (contained in 13 x 13 x 6 foot area)



Scale: 1 inch = 3 feet



Average Spacing between Plants  
Refer to plant nursery tags and adjust as needed

Shrubs = 30"	Grasses = 18"	Perennials = 9-12"
--------------	---------------	--------------------

2 cubic feet of mulch covers ~12 square feet of the garden

Consider adding a rain barrel to enhance your SupportScape



Small-Medium Trees		Ht (ft)	Foliage	Fall Color	Light	Soil	pH	Moisture	Bloom	Fruit	Wildlife
American Holly ( <i>Ilex opaca</i> )		20-40	Evergreen	-	FS-Sun	C,L	4-7.5	W	May-Jun; White-Cream	Sep-Feb; Red Berry-like	SB,BE
Black Gum ( <i>Nyssa sylvatica</i> )		50-75	Deciduous	Red	PS-Sun	L,S	4.5-6	D,M,W	Apr-Jun; Green-White	Sep-Oct; Blue-Black Fleshy	SB,WF,SM,BE
Eastern Hop-Hornbeam ( <i>Ostrya virginiana</i> )		25-50	Deciduous	Yellow	FS-PS	C,L,S	4.2-7.6	M	May; Red-Brown	Jun-Oct; Green-Brown	SB,SM
Eastern Redbud ( <i>Cercis canadensis</i> )		20-30	Deciduous	Yellow	FS-PS	L,S	4.5-7.5	D,M	Apr-May; Pink-Purple	Jul-Dec; Black Pod	BF,SB,SM,BE
Flowering Dogwood ( <i>Cornus florida</i> )		10-30	Deciduous	Dark Red	PS	L	5-7	D,M	Apr-May; White	Sep-Dec; Orange Berry	SB,WF,SM
Red Mulberry ( <i>Morus rubra</i> )		30-45	Deciduous	Yellow	PS-Sun	C,L,S	5-7	M	May-Jun; Green	Jun-Jul; Red Berry	SB
Sweet Crabapple ( <i>Malus coronaria</i> )		10-30	Deciduous	Green	Sun	C,L,S	5.5-6.5	M	Apr-May; Pink-White	Sep-Oct; Green Fleshy	SB,SM,BE
Sweet Gum ( <i>Liquidambar styraciflua</i> )		50-75	Deciduous	Yellow-Red	Sun	C,L,S	4.5-7	M,W	Apr-May; Yellow-Green	Jul-Jan; Spiked Capsule	SB,WF,SM
Medium-Large Shrubs		Ht (ft)	Foliage	Fall Color	Light	Soil	pH	Moisture	Bloom	Fruit	Wildlife
Common Elderberry ( <i>Sambucus canadensis</i> )		6-12	Deciduous	Yellow	FS-Sun	C,L,S	6.1-7.5	D,M,W	Jun; White	Aug-Sep; Violet Berry	SB,SM
Fragrant Sumac ( <i>Rhus aromatica</i> )		5-10	Deciduous	Red	PS-Sun	L,S	6.1-8.5	D	Mar-May; Yellow-Green	Jul-Mar; Dark Red Berry	SB,SM,BE
Highbush Blueberry ( <i>Vaccinium corymbosum</i> )		6-12	Deciduous	Yellow-Red	FS-Sun	L,S	4-6.5	D,M,W	Apr-Jun; White-Pink	Jul-Aug; Blue Berry	BF,SB,WF,SM,BE
Mountain Laurel ( <i>Kalmia latifolia</i> )		12-20	Evergreen	-	FS-Sun	C,L,S	4.5-6	D,M,W	May-Jul; White-Pink	May-Jun; Brown Capsule	SB,SM,BE
Red Chokeberry ( <i>Aronia arbutifolia</i> )		2-12	Deciduous	Red	PS-Sun	C,L,S	5.1-6.5	D,M,W	Mar-May; White-Purple	Sep-Dec; Red Berry	SB,SM,BE
Shadblow Serviceberry ( <i>Amelanchier canadensis</i> )		20-50	Deciduous	Orange	FS-PS	C,L,S	5.6-7.5	M,W	Apr-May; White	Jun-Jul; Red-Purple	SB,SM,BE
Spicebush ( <i>Lindera benzoin</i> )		6-16	Deciduous	Yellow	FS-PS	L,S	4.5-6.5	M,W	Mar-May; Yellow	Sep-Oct; Red Berry	BF,SB,SM
Shining Sumac ( <i>Rhus copallina</i> )		20-35	Deciduous	Red	PS-Sun	C,L,S	5.3-7.5	D	Jul-Sep; Green-Yellow	Oct-Nov; Red Berry	SB,SM,BE
Winterberry Holly ( <i>Ilex verticillata</i> )		6-12	Deciduous	Yellow	FS-Sun	C,L,S	4.5-6.5	M,W	Jun-Jul; Green-White	Aug-Feb; Red Berry	SB,WF,SM,BE
Witch Hazel ( <i>Hamamelis virginiana</i> )		15-30	Deciduous	Yellow	FS-PS	C,L,S	5.5-6.5	D,M	Sep-Dec; Yellow	Oct-Nov; Tan Capsule	SB,SM
Small Shrubs		Ht (ft)	Foliage	Fall Color	Light	Soil	pH	Moisture	Bloom	Fruit	Wildlife
Allegheny Blackberry ( <i>Rubus allegheniensis</i> )		3-9	Deciduous	Orange	PS-Sun	C,L	4.5-7.5	D,M	May-Jun; White	Jul-Sep; Black Berry	BF,SB,SM,BE
Black Chokeberry ( <i>Aronia melanocarpa</i> )		3-6	Deciduous	Dark Red	PS-Sun	C,L,S	5.1-6.5	D,M,W	Apr-May; White	Sep-Nov; Black Berry	SB,SM,BE
Black Huckleberry ( <i>Gaylussacia baccata</i> )		1.5-3	Deciduous	Red	FS-PS	C,L,S	4.5-6.5	D,M,W	May-Jun; White-Pink	Jul-Sep; Black Berry	SB,SM,BE
Inkberry Holly ( <i>Ilex glabra</i> )		6-8	Evergreen	-	FS-Sun	C,L,S	4.5-6	D,M	May-Jun; Green-White	Sep-Mar; Black Berry	SB,WF,SM,BE
Lowbush Blueberry ( <i>Vaccinium angustifolium</i> )		1-2	Deciduous	Red	PS-Sun	C,L,S	4-6	D,M	May-Jun; White-Pink	Jul-Aug; Blue Berry	BF,SB,WF,SM,BE
Maple-leaved Arrowwood ( <i>Viburnum acerifolium</i> )		3-6	Deciduous	Orange	FS-Sun	C,L	5.1-6	D,M	Jun; Cream-Pink	Aug-Dec; Blue Berry	SB,SM,BE
New Jersey Tea ( <i>Ceanothus americanus</i> )		3-4	Deciduous	Yellow	PS-Sun	C,L,S	4.3-6.5	D	May-Sep; White	Sep-Oct; Black	BF,SB,SM,BE
Purple Flowering Raspberry ( <i>Rubus odoratus</i> )		3-6	Deciduous	Yellow	FS-PS	C,L,S	5.1-6	M	Jun-Sep; Purple	Jul-Sep; Red Berry	SB,SM,BE
Sweetfern ( <i>Comptonia peregrina</i> )		3-4	Deciduous	Brown	PS-Sun	L,S	4-7	D	Apr-May; Yellow-Green	Aug-Oct; Brown	SB,SM
Wintergreen ( <i>Gaultheria procumbens</i> )		0.5-1	Evergreen	-	FS-PS	L,S	4-6.5	D,M	May-Aug; White-Pink	Jul-Apr; Red Berry	SB,SM,BE

Legend									
Light		Soil		Moisture		Wildlife Benefits			
Sun	Full Sun (>75% exposure)	C	Clay	D	Dry	BE	Bees		
PS	Partial Sun (~50% exposure)	L	Loamy	M	Moderate	BF	Butterflies		
FS	Full Shade (<25% exposure)	S	Sandy	W	Wet	SB	Song Birds		
						SM	Small Mammals		
						WF	Water Fowl		

<b>Grasses/Sedges/Rushes</b>	<b>Ht (ft)</b>	<b>Light</b>	<b>Soil</b>	<b>pH</b>	<b>Moisture</b>	<b>Bloom</b>	<b>Fruit</b>	<b>Wildlife</b>
Autumn Bentgrass ( <i>Agrostis perennans</i> )	1-3	FS-Sun	C,L	5.5-7.5	D,M,W	Jun-Oct; Small green attached to stem	Jun-Oct; Green-brown seeds	SB,SM,WF
Big Bluestem ( <i>Andropogon gerardii</i> )	2-6.5	PS-Sun	C,L,S	6-7.5	D,M,W	Jun-Sep; Purplish 3-parted finger like	Oct-Dec; Brown seeds	SB,SM,WF
Broomsedge ( <i>Andropogon virginicus</i> )	1-3	Sun	C,L,S	4.9-7	D,M,W	Aug-Nov; Reddish brown spike-lets from top	Oct-Dec; Clumped seeds	SB,SM,WF
Giant Plumegrass ( <i>Saccharum giganteum</i> )	3.5-10	PS-Sun	L,S	3.5-7	M,W	Aug-Oct; Large (1+ ft) plumes	Aug-Oct; Silver seed heads	SB,SM,WF
Little Bluestem ( <i>Schizachyrium scoparium</i> )	1.5-4	Sun	L,S	6.5-8	D	Aug-Oct; Purplish bronze to brown	Aug-Dec; Silver-white seeds	SB,SM,WF
Redtop ( <i>Tridens flavus</i> )	2-6.5	PS-Sun	C,L,S	4.5-6.5	D,M	Aug-Oct; Red-purple	Jun-Oct; Red-brown seeds	SB,SM,WF
Switchgrass ( <i>Panicum virgatum</i> )	3-6	PS-Sun	C,L,S	4.5-8	D,M,W	Jul-Oct; Green, purple	Aug-Dec; Red-brown seeds	SB,SM,WF
River oats ( <i>Chasmanthium latifolium</i> )	2-5	PS-Sun	C,L,S	5-7	D,M	Jul-Sep; Large tan drooping oat-like	Jun-Oct; Green-brown seeds	SB,SM,WF
<b>Herbaceous Perennials</b>	<b>Ht (ft)</b>	<b>Light</b>	<b>Soil</b>	<b>pH</b>	<b>Moisture</b>	<b>Bloom</b>	<b>Fruit</b>	<b>Wildlife</b>
Black-eyed Susan ( <i>Rudbeckia hirta</i> )	1-3.5	PS-Sun	C,L	6-7	D,M	Jun-Oct; Yellow cone with black eye	Oct-Dec; Capsule	BF,SB,BE
Blazing Star ( <i>Liatris spicata</i> )	1-6.5	PS-Sun	C,L,S	5.6-7.5	D,M	Jul-Aug; Rose-purple, tall spikes	Sep-Nov; Capsule	BF,SB,BE
Blue Violet ( <i>Viola sororia</i> )	0.5-1	FS-Sun	C,L	6-7.8	M	Mar-Jun; Dark blue-violet	Sep-Nov; Capsule	SB,SM,BE
Butterfly Weed ( <i>Asclepias tuberosa</i> )	1-3	PS-Sun	L,S	4.8-6.8	D,M	May-Jul; Orange clusters	Sep-Nov; Pod	BF,BE
Cardinal Flower ( <i>Lobelia cardinalis</i> )	2-4	PS-Sun	C,L	5.8-7.8	M,W	Jul-Oct; Red tubular	Sep-Nov; Capsule	BF,SB
Common Milkweed ( <i>Asclepias syriaca</i> )	3.5-6	Sun	L,S	5.5-7.3	D	May-Aug; Pale purple tall tight clusters	Aug-Nov; Pod	BF,BE
Early Coneflower ( <i>Rudbeckia fulgida</i> )	1-3.5	PS-Sun	L	5-7	D,M	Jul-Oct; Yellow-orange with black eye	Oct-Dec; Capsule	BF,SB,BE
Evening Primrose ( <i>Oenothera biennis</i> )	1.5-6	PS-Sun	C,L,S	5-7	D	Jun-Oct; Yellow opens in evening	Oct-Dec; Capsule	BE
Golden Ragwort ( <i>Packera aurea</i> )	0.5-3	FS-Sun	L	5-6.8	M,W	Apr-Aug; Yellow star-like	Sep-Nov; Capsule	BF,BE
Great Blue Lobelia ( <i>Lobelia siphilitica</i> )	1-5	FS-Sun	C,L,S	5.8-6.5	M,W	Aug-Oct; Blue-violet tubular spikes	Sep-Nov; Capsule	BF,SB,BE
Joe-Pye Weed ( <i>Eupatorium fistulosum</i> )	1.5-10	PS-Sun	C,L	4.5-7	D,M,W	Jul-Oct; Pink-purple tall tight clusters	Sep-Nov; Capsule	BF,SB,BE
New England Aster ( <i>Aster novae-angliae</i> )	1-6	PS-Sun	L	5-6.5	M	Aug-Oct; Small violet cones	Oct-Dec; Capsule	BF,SM,BE
Obedient Plant ( <i>Physostegia virginiana</i> )	1.5-5	PS-Sun	C,L,S	5-7	D,M	Jun-Sep; Pink tall spikes	Oct-Dec; Nut-like	BF
Phlox ( <i>Phlox maculata</i> )	1-3	FS-Sun	C,L	5.9-6.8	M,W	May-Sep; Small pink-purple clusters	Oct-Dec; Capsule	BF
Purple Coneflower ( <i>Echinacea purpurea</i> )	2-5	PS-Sun	C,L,S	5-7	D,M	Jun-Aug; Purple cone with orange eye	Aug-Dec; Capsule	BF,SB
Threadleaf Coreopsis ( <i>Coreopsis verticillata</i> )	0.5-3	PS-Sun	L	5-5.5	D,M	Jun-Oct; Small yellow cone-like	Sep-Nov; Capsule	BF,BE
Virginia Bluebells ( <i>Mertensia virginica</i> )	1-2.5	FS-PS	C,L	4.5-8	M,W	Mar-Jun; Pink-blue bells	Mar-May; Nut-like	BE
Virginia Bunchflower ( <i>Melanthium virginicum</i> )	2.5-6	PS-Sun	C,L,S	4.5-7	M	Jun-Aug; Green-white 6 petal star-like	Aug-Dec; Capsule	BE
Virginia Spiderwort ( <i>Tradescantia virginiana</i> )	1-3	FS-Sun	C,L	4-8	M	Apr-Jun; Violet with yellow stamens	Aug-Dec; Capsule	BE,BE
White Turtlehead ( <i>Chelone glabra</i> )	1.5-6	PS-Sun	C,L,S	4.5-6.8	M,W	Jul-Oct; White flattened bells	Sep-Nov; Capsule	BF,BE
Wild Columbine ( <i>Aquilegia canadensis</i> )	0.5-3	PS-Sun	L	5.8-6.8	D,M	Apr-Jul; Red and yellow bell-like	Aug-Dec; Capsule	BF,BE

<b>Legend</b>								
<b>Light</b>		<b>Soil</b>		<b>Moisture</b>		<b>Wildlife Benefits</b>		
Sun	Full Sun (>75% exposure)	C	Clay	D	Dry	BE	Bees	
PS	Partial Sun (~50% exposure)	L	Loamy	M	Moderate	BF	Butterflies	
FS	Full Shade (<25% exposure)	S	Sandy	W	Wet	SB	Song Birds	
						SM	Small Mammals	
						WF	Water Fowl	