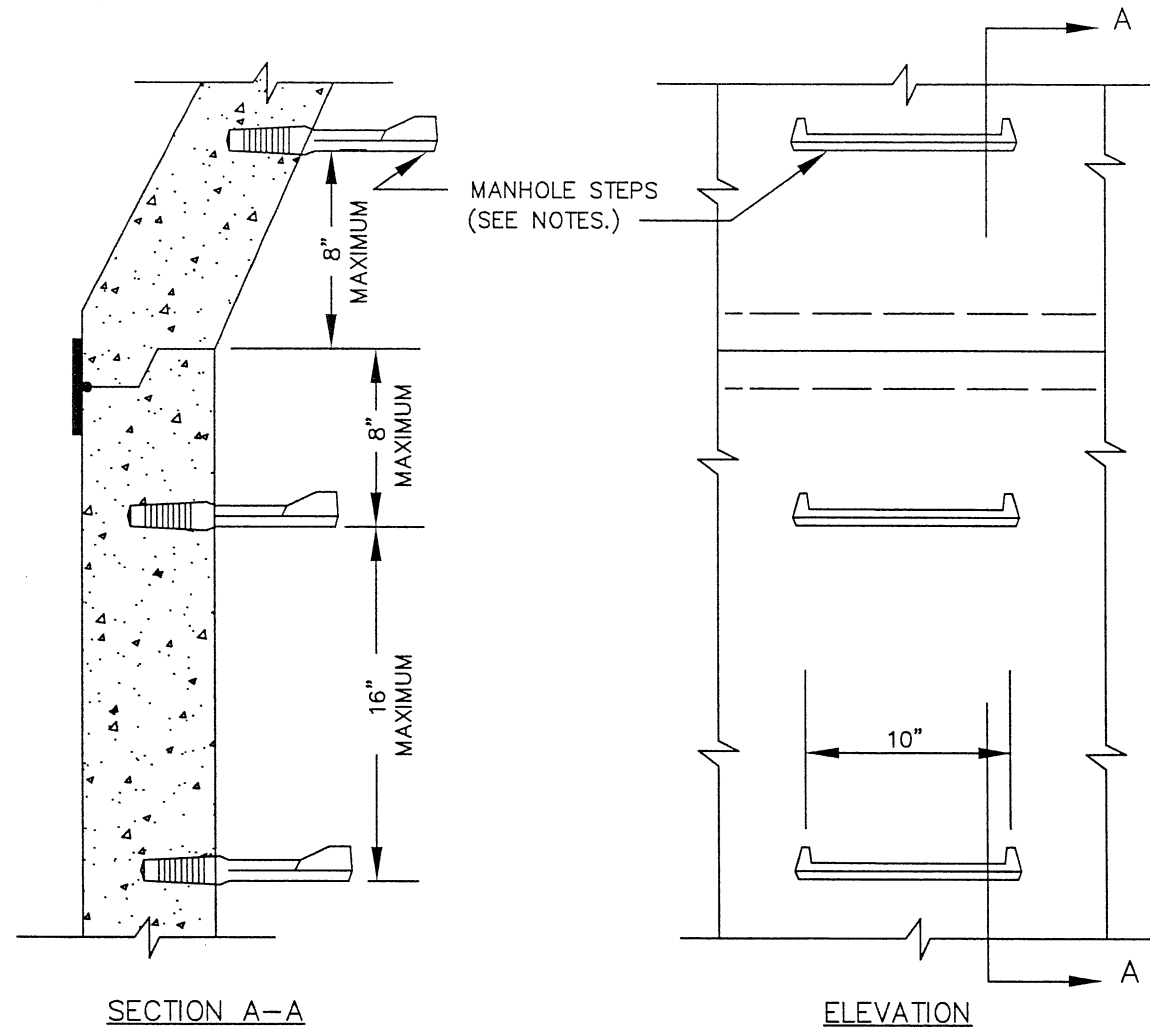


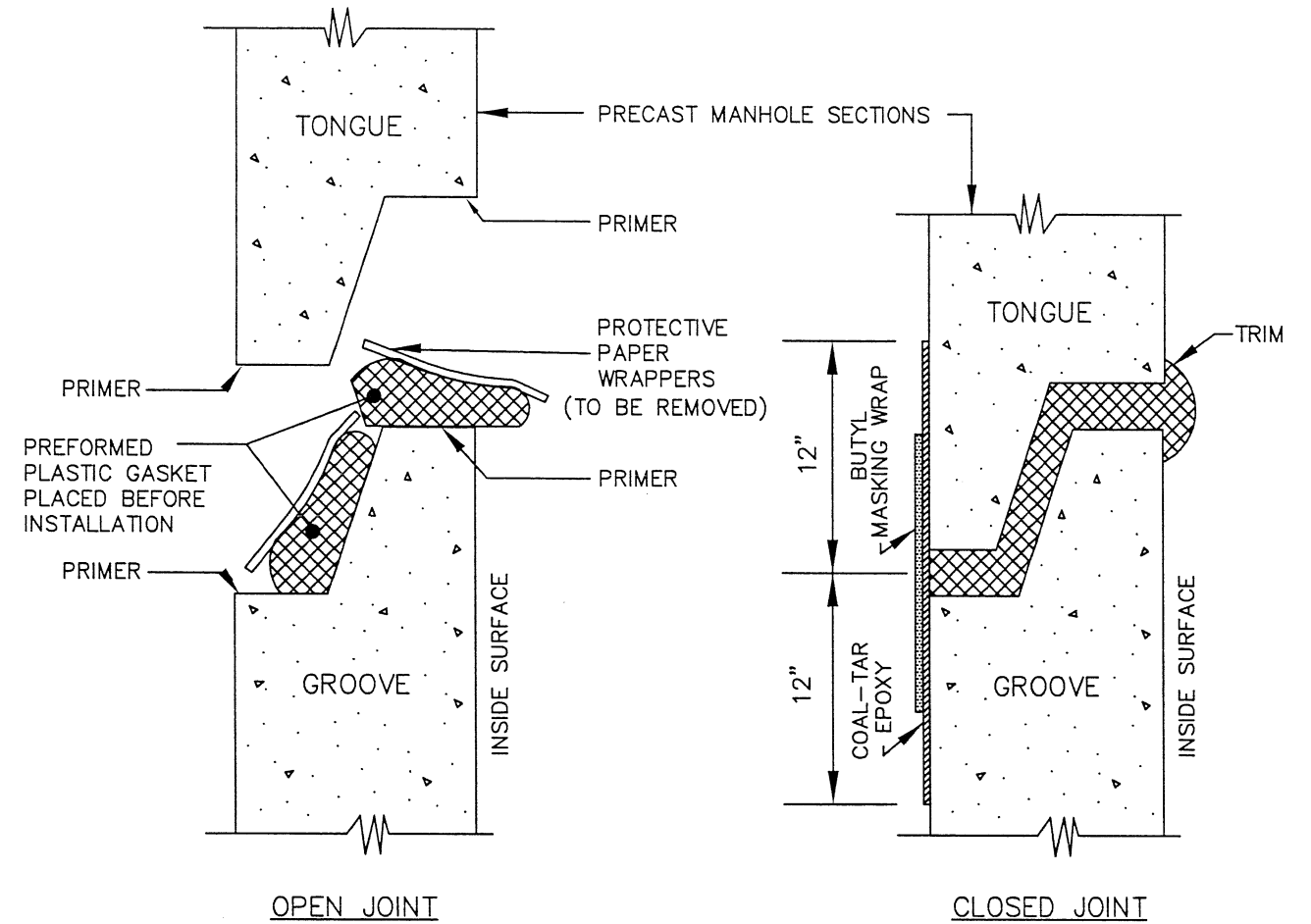
F:\STDD\WG\Manhole-ForceMain-County\ManholewithForceMain_4.dwg



NOTES

1. STEPS SHALL BE 3/8" STEEL REINFORCED ROD ENCAPSULATED IN POLYPROPYLENE PLASTIC.
2. RISER SECTIONS SHALL BE SET SO THAT STEPS ALIGN VERTICALLY.
3. THE FIRST STEP SHALL BE NO MORE THAN 16" BELOW THE TOP OF THE MANHOLE CONE.

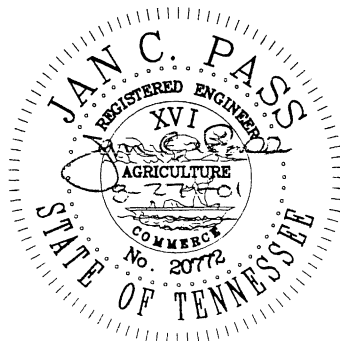
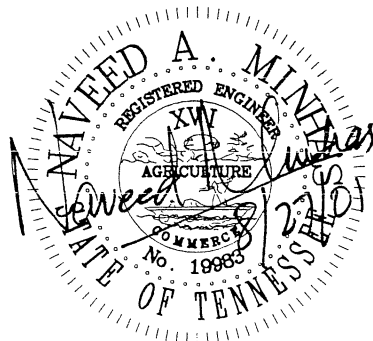
MANHOLE STEPS



NOTES

1. CLEAN ALL DEBRIS FROM JOINTS PRIOR TO GASKET APPLICATION.
2. TRIM PROTRUDING GASKET INSIDE AND OUTSIDE.

**JOINT AND GASKET FOR
PRECAST MANHOLE SECTIONS**



NO.	REVISION	DATE
1	REVISIONS AS MARKED OR CLOUDED	8/24/01
0	INITIAL ISSUE	12/10/99

**CITY OF CHATTANOOGA AND HAMILTON COUNTY
SANITARY/STORM MANHOLE DETAILS**

DATE OF ORIGINAL ISSUE
DECEMBER 10, 1999

STANDARD NUMBER: **SD-301.04**