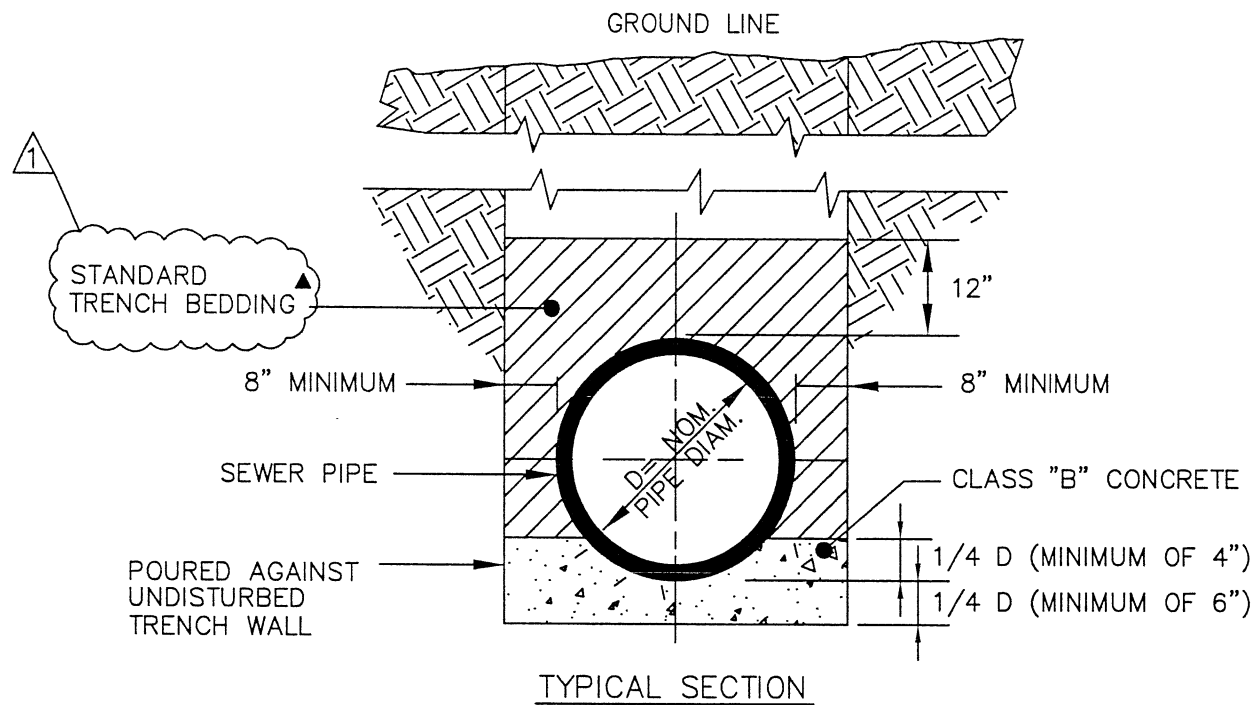


F:\STDDWGS\TrenchDetails-County\TrenchDetails-County-Combined(concrete)_1.dwg

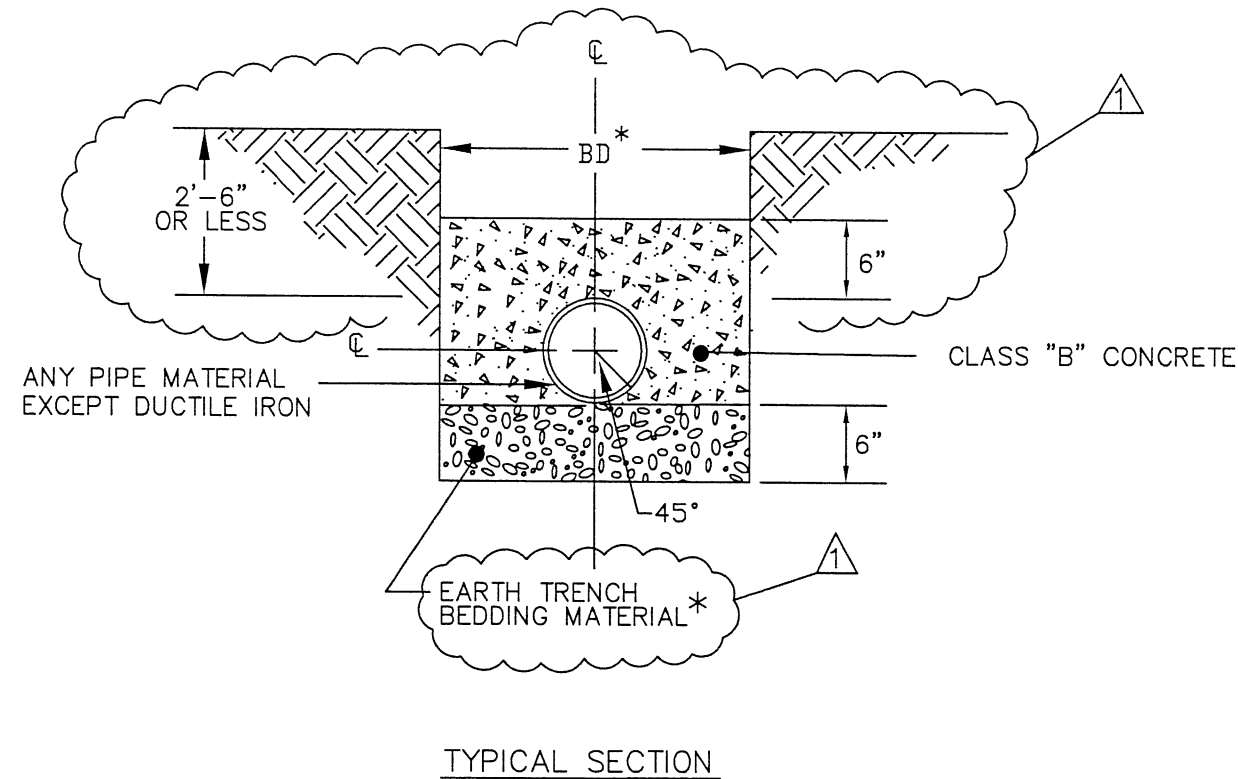


CONCRETE CRADLE

NOTES

1. CLASS "B" CONCRETE IS TO BE POURED 16 HOURS BEFORE PLACING BACKFILL, AND IN A MANNER THAT PREVENTS THE FLOATING OF PIPES.
2. PIPES ARE TO BE LAID BEFORE THE CONCRETE HARDENS.

▲ 3. SEE STANDARD DRAWING SD-307.01.

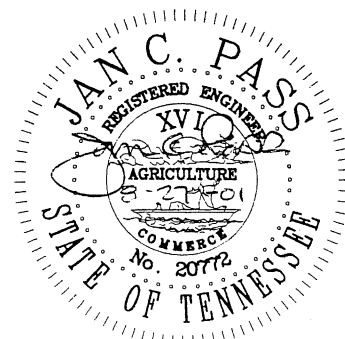
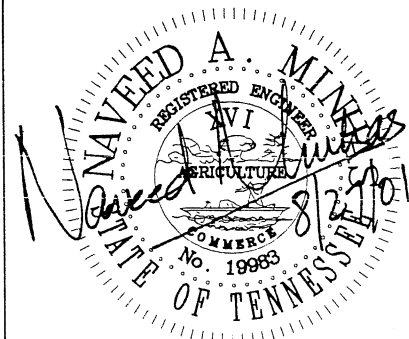


CONCRETE CAP FOR SHALLOW PIPE

NOTES

1. CLASS "B" CONCRETE IS TO BE POURED 36 HOURS BEFORE PLACING BACKFILL, AND IN A MANNER THAT PREVENTS THE FLOATING OF PIPES.
2. CONCRETE ENCASEMENT IS REQUIRED FOR DITCHES AND CREEKS WHERE THE COVER IS 2'-6" OR LESS.

▲ * 3. SEE STANDARD DRAWING SD-307.01.



NO.	REVISION	DATE
1	REVISIONS AS MARKED OR CLOUDED	8/24/01
0	INITIAL ISSUE	12/10/99

CITY OF CHATTANOOGA AND HAMILTON COUNTY	
TRENCH DETAILS (CONCRETE PROTECTION)	
DATE OF ORIGINAL ISSUE DECEMBER 10, 1999	STANDARD NUMBER : SD-308.01