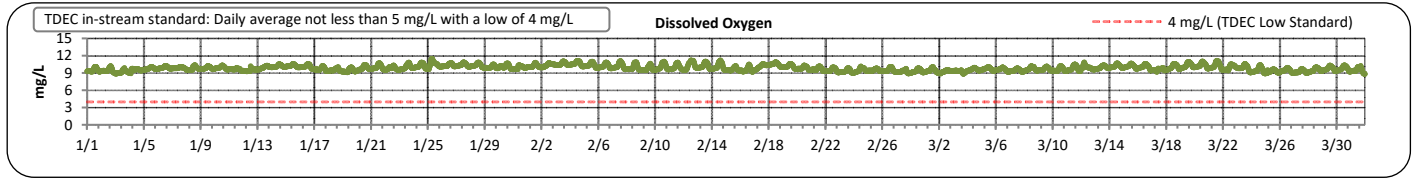
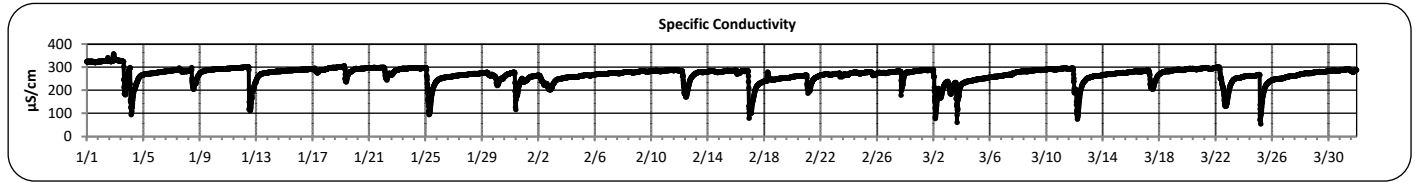
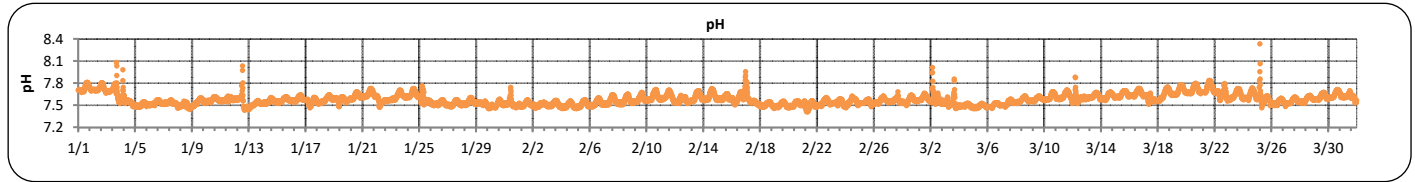
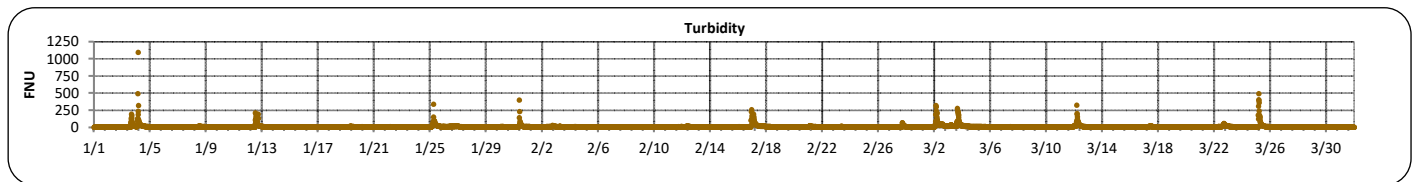
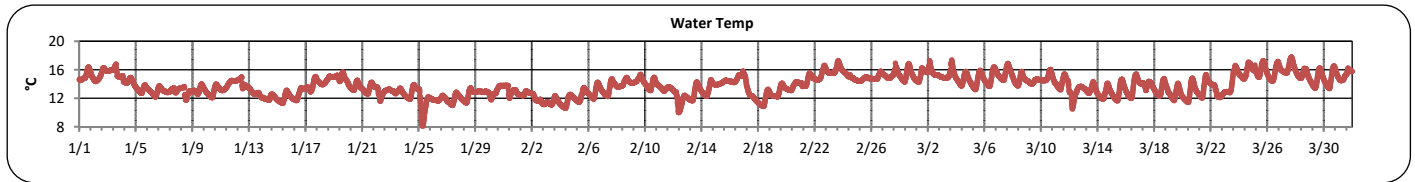
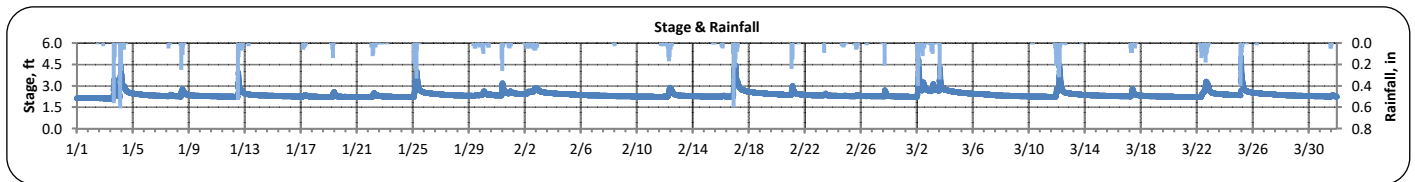




# The City of Chattanooga and Hamilton County Joint Water Quality Monitoring Quarterly Report (January 1, 2023 - March 31, 2023) Stringers Branch at Signal Mountain



PARAMETER	DESCRIPTION	CONTINUOUS WATER QUALITY PARAMETERS:	SUMMARY STATISTICS				
			MINIMUM OBSERVED	MAXIMUM OBSERVED	MEDIAN OBSERVED	MEAN OBSERVED	STANDARD DEVIATION
STREAM NAME:	Stringers Branch	STAGE (FT):	2.1	5.0	2.3	2.4	0.2
LOCATION:	Signal Mountain Rd	TEMPERATURE (°C):	8	18	14	14	1
TMDL/IMPAIRMENT:	<i>E. coli</i> , Siltation, Habitat Alteration	TURBIDITY (FNU):	2	1094	5	10	25
		pH:	7.4	8.3	7.6	7.6	0.1
APPROX. DRAINAGE AREA:	5.7 square miles	SPECIFIC CONDUCTIVITY (µS/cm):	54	359	277	268	33
TOTAL NO. STORMS OVER 0.1 INCH:	28	DISSOLVED OXYGEN (mg/L):	8.8	11.5	9.8	9.9	0.5
MAX. DAILY RAINFALL:	1.3 inches						
TOTAL RAINFALL (FOR PERIOD):	17.2 inches						





**The City of Chattanooga and Hamilton County Joint Water Quality Monitoring  
Quarterly Report (January 1, 2023 - March 31, 2023)  
Stringers Branch at Signal Mountain**



**Explanation of Statistics:**

<b>MINIMUM OBSERVED</b>	The minimum of the values recorded by the datasonde in 15 minute intervals.
<b>MAXIMUM OBSERVED</b>	The maximum of the values recorded by the datasonde in 15 minute intervals.
<b>MEDIAN OBSERVED</b>	The median of all the values recorded by the datasonde in 15 minute intervals.
<b>MEAN OBSERVED</b>	The average of all the values recorded by the datasonde in 15 minute intervals.
<b>STANDARD DEVIATION</b>	The standard deviation of all the values recorded by the datasonde in 15 minute intervals.

**Sampled Data:**

Analyte (units)	Dry Sample		Storm Sample		Storm Sample		Storm Sample		Storm Sample		Storm Sample		Storm Sample	
	3/6/2023		3/17/2023		3/17/2023		3/17/2023		3/22/2023		3/22/2023		3/22/2023	
	Time	Results	Time	Results	Time	Results	Time	Results	Time	Results	Time	Results	Time	Results
<i>Escherichia coli</i> (MPN/100mL)	11:05	160	10:09	2,100	10:46	2,200	12:50	1,100	10:10	700	13:10	2,200	14:16	1,400
Total Suspended Solids (mg/L)	11:05	5	10:09	16	10:46	15	12:50	6	10:10	15	13:10	12	14:16	18
Total Phosphorus (mg/L)	11:05	0.070	10:09	0.180	10:46	0.150	12:50	0.150	10:10	0.060	13:10	0.070	14:16	0.120
Total Nitrogen (mg/L)	11:05	0.82	10:09	1.82	10:46	1.12	12:50	1.73	10:10	1.02	13:10	2.72	14:16	2.22

**Notes:**

Data Gaps

There were no data gaps at the Stringers Branch at Signal Mountain location during this monitoring period.

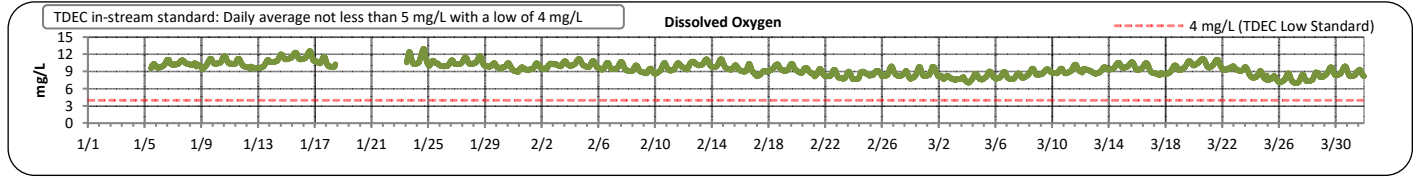
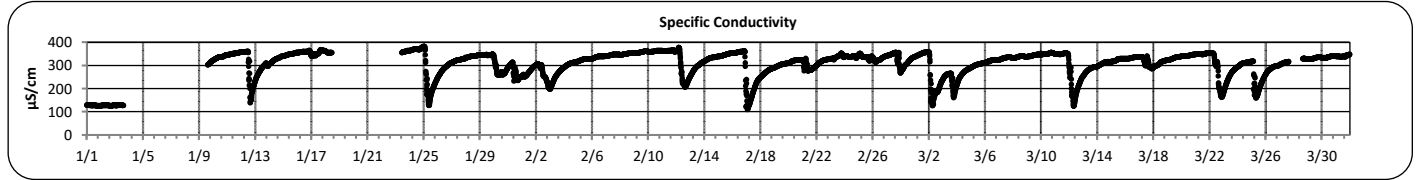
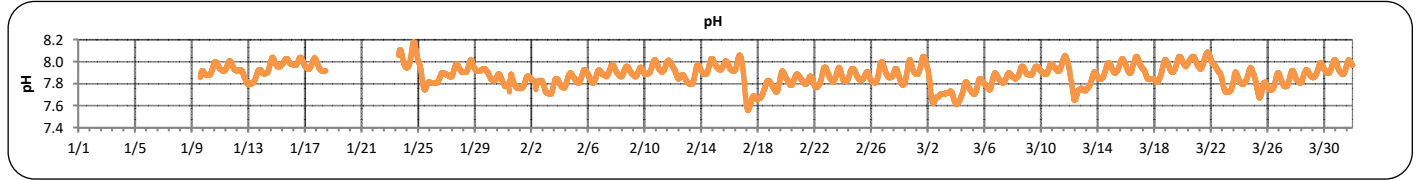
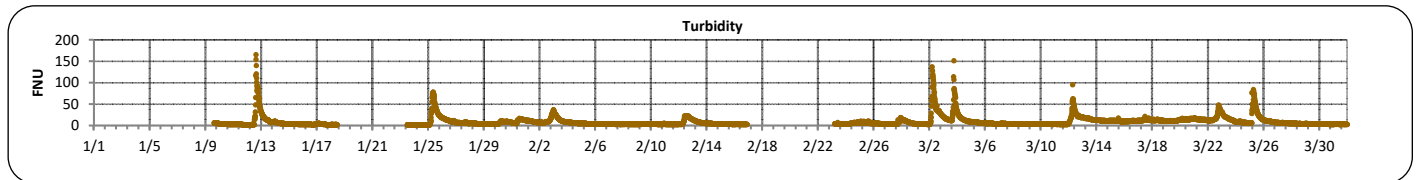
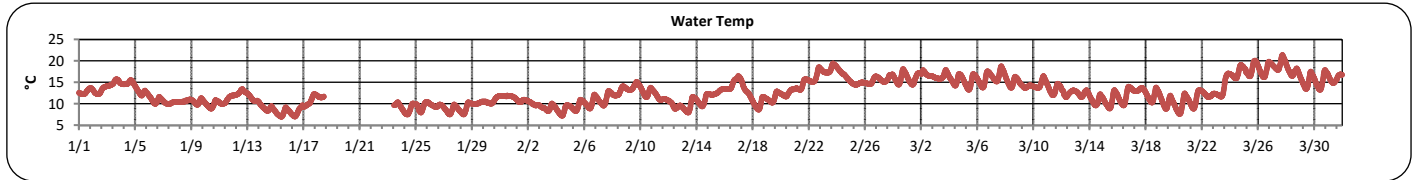
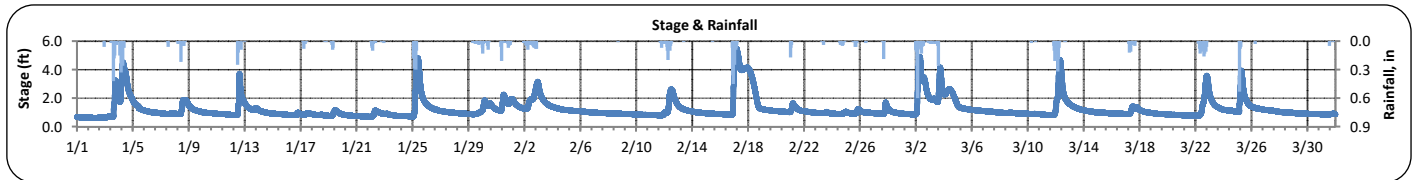


# The City of Chattanooga and Hamilton County Joint Water Quality Monitoring Quarterly Report (January 1, 2023 - March 31, 2023)

## Friar Branch at Polymer Drive



PARAMETER	DESCRIPTION	CONTINUOUS WATER QUALITY PARAMETERS:	SUMMARY STATISTICS				
			MINIMUM OBSERVED	MAXIMUM OBSERVED	MEDIAN OBSERVED	MEAN OBSERVED	STANDARD DEVIATION
STREAM NAME:	Friar Branch	STAGE (FT):	0.6	5.5	1.0	1.2	0.7
LOCATION:	Polymer Drive Bridge	TEMPERATURE (°C):	7	21	12	13	3
TMDL/IMPAIRMENT:	<i>E. coli</i> , Siltation, Habitat Alteration	TURBIDITY (FNU):	1	166	5	9	12
		pH:	7.6	8.2	7.9	7.9	0.1
APPROX. DRAINAGE AREA:	20.7 square miles	SPECIFIC CONDUCTIVITY (µS/cm):	110	382	327	307	57
TOTAL NO. STORMS OVER 0.1 INCH:	26	DISSOLVED OXYGEN (mg/L):	7.1	13.0	9.6	9.5	1.1
MAX. DAILY RAINFALL:	1.5 inches						
TOTAL RAINFALL (FOR PERIOD):	16.2 inches						





**The City of Chattanooga and Hamilton County Joint Water Quality Monitoring  
Quarterly Report (January 1, 2023 - March 31, 2023)  
Friar Branch at Polymer Drive**



**Explanation of Statistics:**

<b>MINIMUM OBSERVED</b>	The minimum of the values recorded by the datasonde in 15 minute intervals.
<b>MAXIMUM OBSERVED</b>	The maximum of the values recorded by the datasonde in 15 minute intervals.
<b>MEDIAN OBSERVED</b>	The median of all the values recorded by the datasonde in 15 minute intervals.
<b>MEAN OBSERVED</b>	The average of all the values recorded by the datasonde in 15 minute intervals.
<b>STANDARD DEVIATION</b>	The standard deviation of all the values recorded by the datasonde in 15 minute intervals.

**Sampled Data:**

Analyte (units)	Storm Sample							
	3/17/2023							
	Time	Results	Time	Results	Time	Results	Time	Results
<i>Escherichia coli</i> (MPN/100mL)	09:30	350						
Total Suspended Solids (mg/L)	09:30	-						
Total Phosphorus (mg/L)	09:30	<0.500						
Total Nitrogen (mg/L)	09:30	0.525						

\*Value represents Nitrate/Nitrite concentrations only. TKN was below the detection limit of 1 mg/L.

**Notes:**

Data Gaps

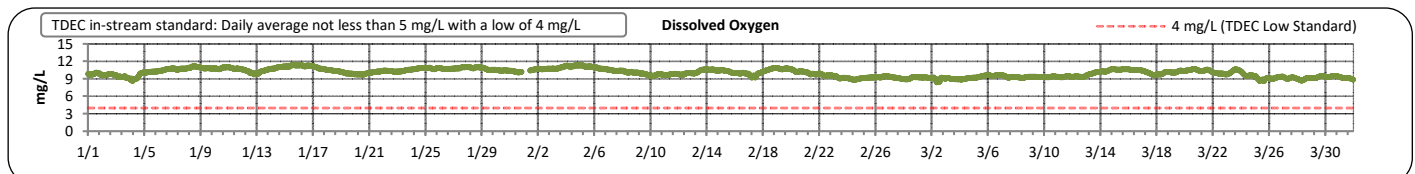
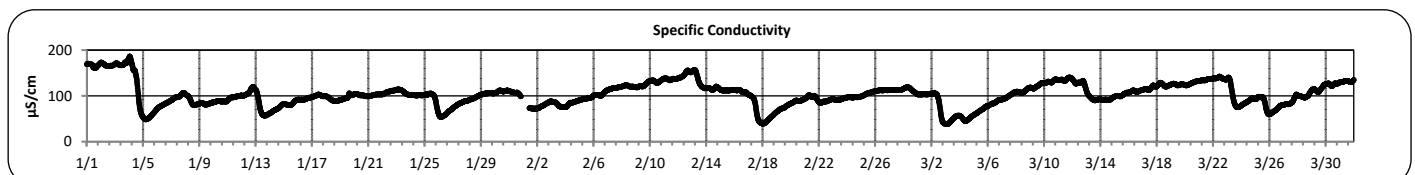
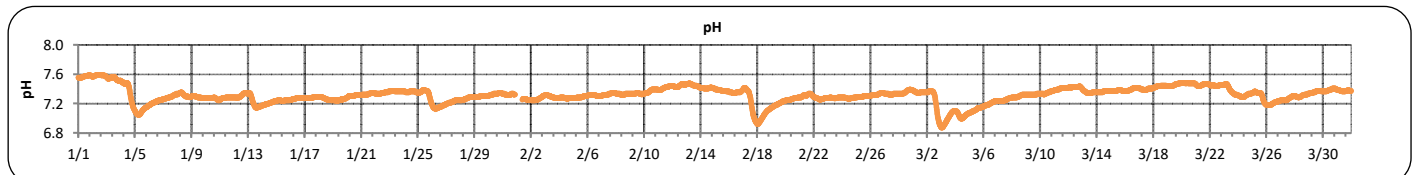
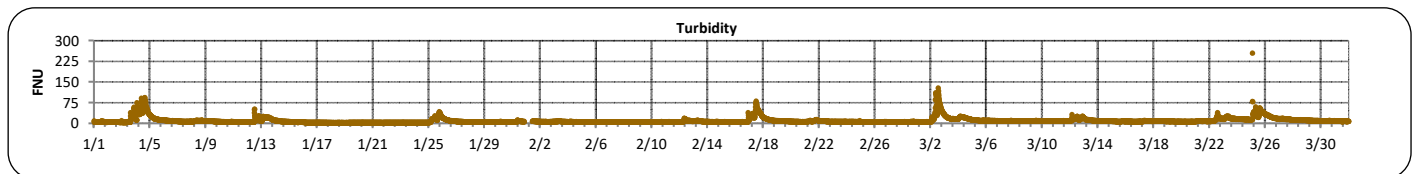
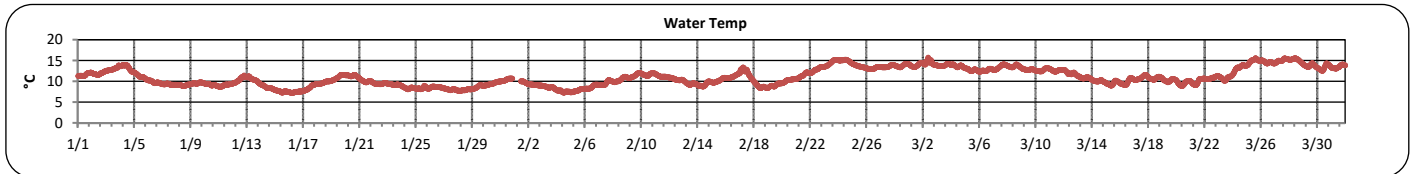
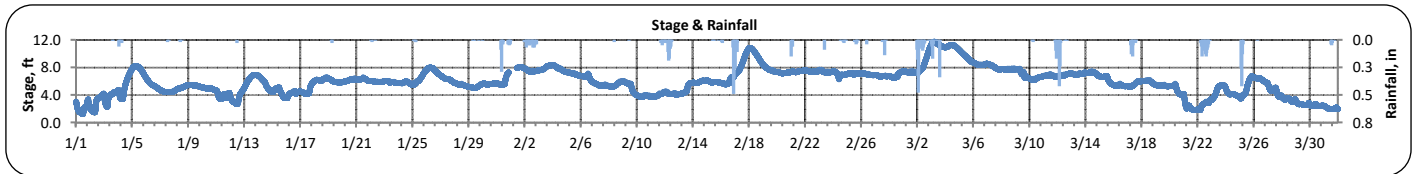
Data were removed on 1/1-1/9, 2/16-2/23, and 3/27-3/28 due to sensor fouling.  
Sonde data are unavailable between 1/18-1/23 due to sonde reporting issues.



# The City of Chattanooga and Hamilton County Joint Water Quality Monitoring Quarterly Report (January 1, 2023 - March 31, 2023) N. Chick Creek at Greenway Farms



PARAMETER	DESCRIPTION	CONTINUOUS WATER QUALITY PARAMETERS:	SUMMARY STATISTICS				
			MINIMUM OBSERVED	MAXIMUM OBSERVED	MEDIAN OBSERVED	MEAN OBSERVED	STANDARD DEVIATION
STREAM NAME:	N. Chick Creek	STAGE (FT):	1.2	11.8	6.0	6.0	1.9
LOCATION:	Greenway Farms Boat Launch	TEMPERATURE (°C):	7	16	11	11	2
TMDL/IMPAIRMENT:	pH, Siltation, Habitat Alteration	TURBIDITY (FNU):	2	254	7	9	10
		pH:	6.9	7.6	7.3	7.3	0.1
APPROX. DRAINAGE AREA:	117.4 square miles	SPECIFIC CONDUCTIVITY (µS/cm):	38	186	102	103	26
TOTAL NO. STORMS OVER 0.1 INCH:	28	DISSOLVED OXYGEN (mg/L):	8.4	11.5	10.2	10.1	0.7
MAX. DAILY RAINFALL:	1.4 inches						
TOTAL RAINFALL (FOR PERIOD):	17.4 inches						





**The City of Chattanooga and Hamilton County Joint Water Quality Monitoring  
Quarterly Report (January 1, 2023 - March 31, 2023)  
N. Chick Creek at Greenway Farms**



**Explanation of Statistics:**

<b>MINIMUM OBSERVED</b>	The minimum of the values recorded by the datasonde in 15 minute intervals.
<b>MAXIMUM OBSERVED</b>	The maximum of the values recorded by the datasonde in 15 minute intervals.
<b>MEDIAN OBSERVED</b>	The median of all the values recorded by the datasonde in 15 minute intervals.
<b>MEAN OBSERVED</b>	The average of all the values recorded by the datasonde in 15 minute intervals.
<b>STANDARD DEVIATION</b>	The standard deviation of all the values recorded by the datasonde in 15 minute intervals.

**Sampled Data:**

Analyte (units)	Storm Sample							
	3/17/2023							
	Time	Results	Time	Results	Time	Results	Time	Results
<i>Escherichia coli</i> (MPN/100mL)	10:00	100						
Total Suspended Solids (mg/L)	10:00	-						
Total Phosphorus (mg/L)	10:00	<0.500						
Total Nitrogen (mg/L)	10:00	0.35						

\*Value represents Nitrate/Nitrite concentrations only. TKN was below the detection limit of 1 mg/L.

**Notes:**

Data Gaps

Data are unavailable on 2/1 due to equipment reporting issues.

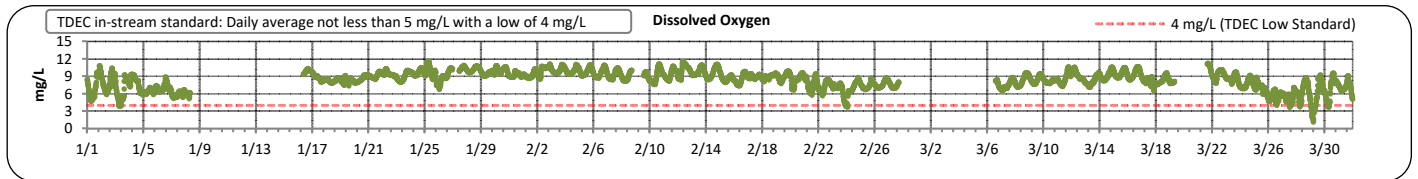
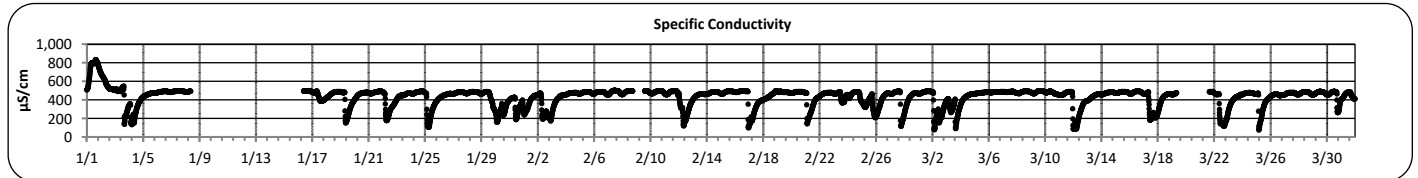
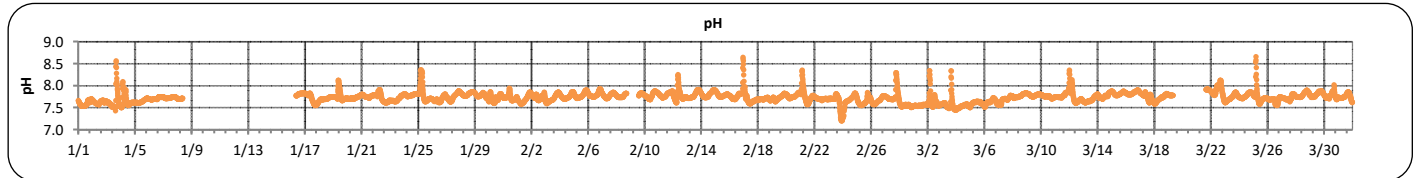
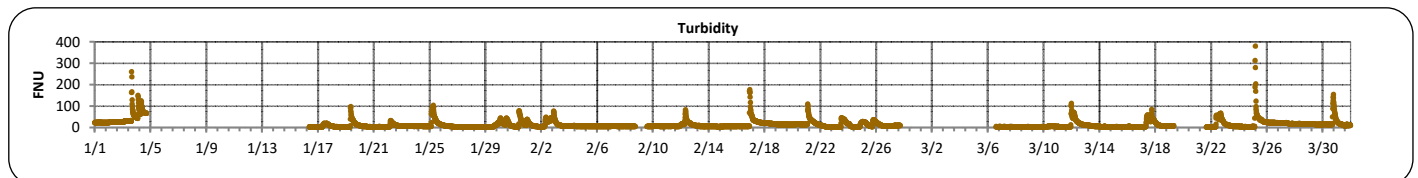
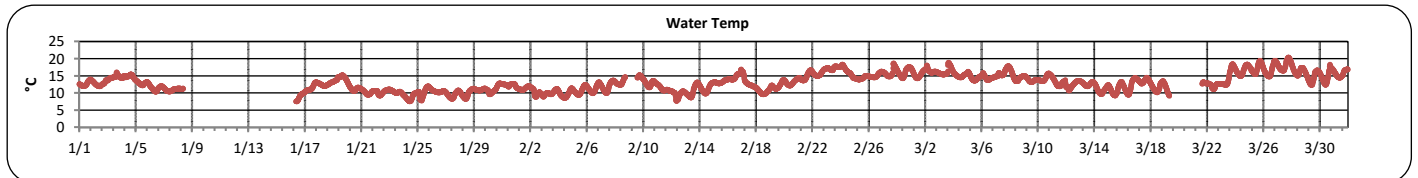
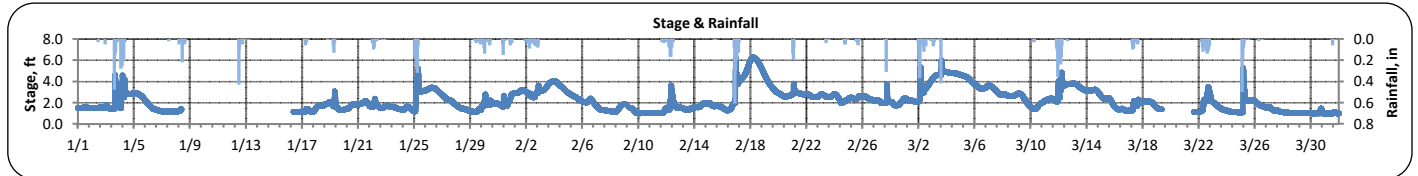


# The City of Chattanooga and Hamilton County Joint Water Quality Monitoring Quarterly Report (January 1, 2023 - March 31, 2023)

## Dobbs Branch at Park City Park



PARAMETER	DESCRIPTION	CONTINUOUS WATER QUALITY PARAMETERS:	SUMMARY STATISTICS				
			MINIMUM OBSERVED	MAXIMUM OBSERVED	MEDIAN OBSERVED	MEAN OBSERVED	STANDARD DEVIATION
STREAM NAME:	Dobbs Branch	STAGE (FT):	1.0	6.3	2.0	2.3	1.1
LOCATION:	Park City Park	TEMPERATURE (°C):	8	20	13	13	3
TMDL/IMPAIRMENT:	<i>E. coli</i> , Siltation, Habitat Alteration	TURBIDITY (FNU):	2	381	7	14	19
		pH:	7.2	8.7	7.7	7.7	0.1
APPROX. DRAINAGE AREA:	6.2 square miles	SPECIFIC CONDUCTIVITY (µS/cm):	74	837	470	434	99
TOTAL NO. STORMS OVER 0.1 INCH:	27						
MAX. DAILY RAINFALL:	1.3 inches	DISSOLVED OXYGEN (mg/L):	1.2	11.7	8.7	8.5	1.5
TOTAL RAINFALL (FOR PERIOD):	16.4 inches						





**The City of Chattanooga and Hamilton County Joint Water Quality Monitoring  
Quarterly Report (January 1, 2023 - March 31, 2023)  
Dobbs Branch at Park City Park**



**Explanation of Statistics:**

<b>MINIMUM OBSERVED</b>	The minimum of the values recorded by the datasonde in 15 minute intervals.
<b>MAXIMUM OBSERVED</b>	The maximum of the values recorded by the datasonde in 15 minute intervals.
<b>MEDIAN OBSERVED</b>	The median of all the values recorded by the datasonde in 15 minute intervals.
<b>MEAN OBSERVED</b>	The average of all the values recorded by the datasonde in 15 minute intervals.
<b>STANDARD DEVIATION</b>	The standard deviation of all the values recorded by the datasonde in 15 minute intervals.

**Sampled Data:**

Analyte (units)	Storm Sample							
	3/17/2023							
	Time	Results	Time	Results	Time	Results	Time	Results
<i>Escherichia coli</i> (MPN/100mL)	09:00	7,700						
Total Suspended Solids (mg/L)	09:00	-						
Total Phosphorus (mg/L)	09:00	<0.500						
Total Nitrogen (mg/L)	09:00	4.20						

**Notes:**

Data Gaps

Data gaps are present on 1/8-1/12, 2/8-2/9, and 3/19-3/21 due to equipment reporting issues.

Turbidity data were removed on 1/4-1/8 and 2/27-3/6 due to sensor fouling.

DO data were removed on 1/27 and 2/27-3/6 due to sensor fouling.