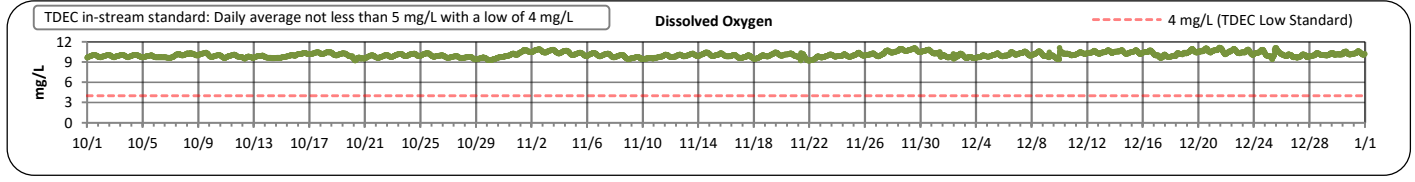
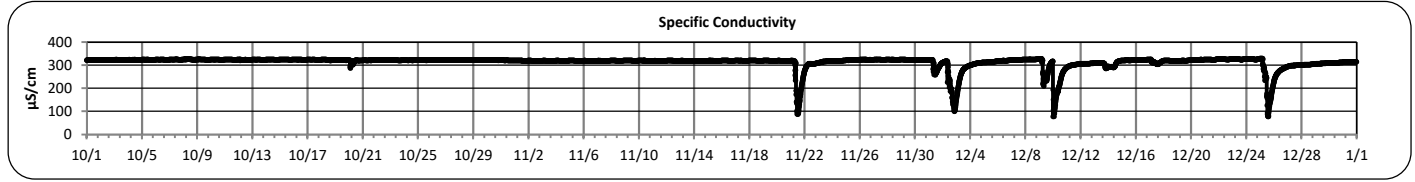
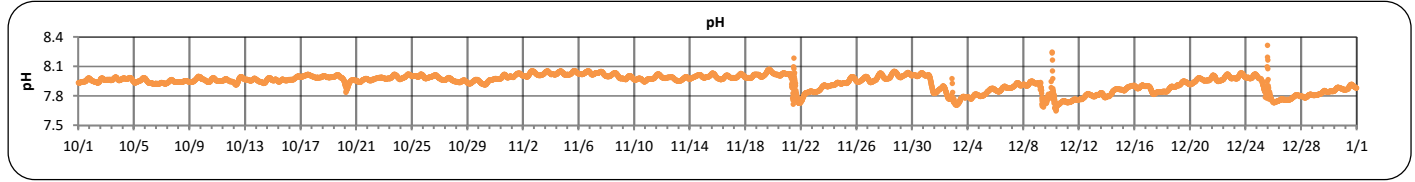
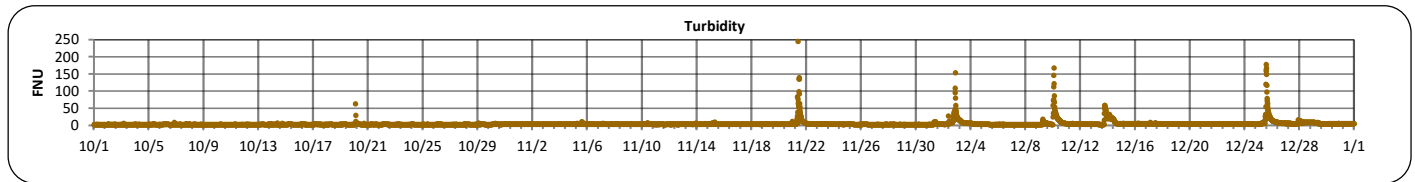
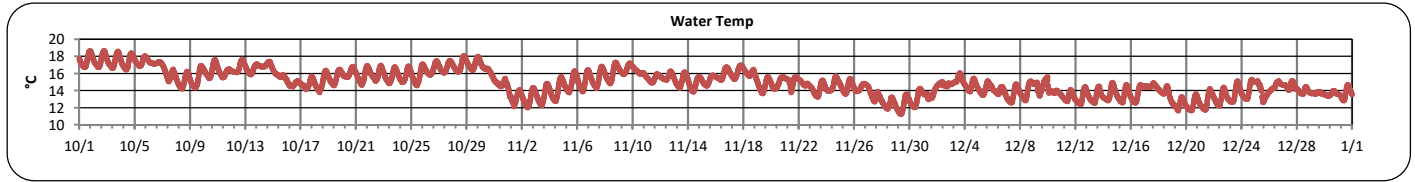
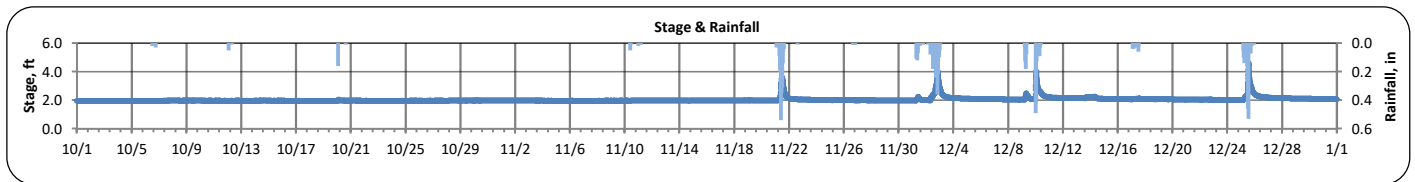




The City of Chattanooga and Hamilton County Joint Water Quality Monitoring Quarterly Report (October 1, 2023 - December 31, 2023) Stringers Branch at Signal Mountain



PARAMETER	DESCRIPTION	CONTINUOUS WATER QUALITY PARAMETERS:	SUMMARY STATISTICS				
			MINIMUM OBSERVED	MAXIMUM OBSERVED	MEDIAN OBSERVED	MEAN OBSERVED	STANDARD DEVIATION
STREAM NAME:	Stringers Branch	STAGE (FT):	2.0	4.6	2.0	2.0	0.2
LOCATION:	Signal Mountain Rd	TEMPERATURE (°C):	11	19	15	15	1
TMDL/IMPAIRMENT:	<i>E. coli</i> , Siltation, Habitat Alteration	TURBIDITY (FNU):	2	245	3	5	9
		pH:	7.7	8.3	8.0	7.9	0.1
APPROX. DRAINAGE AREA:	5.7 square miles	SPECIFIC CONDUCTIVITY (µS/cm):	78	330	322	314	28
TOTAL NO. STORMS OVER 0.1 INCH:	8	DISSOLVED OXYGEN (mg/L):	9.2	11.2	10.0	10.1	0.4
MAX. DAILY RAINFALL:	2.1 inches						
TOTAL RAINFALL (FOR PERIOD):	9.0 inches						





**The City of Chattanooga and Hamilton County Joint Water Quality Monitoring
Quarterly Report (October 1, 2023 - December 31, 2023)
Stringers Branch at Signal Mountain**



Explanation of Statistics:

MINIMUM OBSERVED	The minimum of the values recorded by the datasonde in 15 minute intervals.
MAXIMUM OBSERVED	The maximum of the values recorded by the datasonde in 15 minute intervals.
MEDIAN OBSERVED	The median of all the values recorded by the datasonde in 15 minute intervals.
MEAN OBSERVED	The average of all the values recorded by the datasonde in 15 minute intervals.
STANDARD DEVIATION	The standard deviation of all the values recorded by the datasonde in 15 minute intervals.

Sampled Data: No samples were recorded at Stringers Branch at Signal Mountain during this monitoring period.

Analyte (units)								
	Time	Results	Time	Results	Time	Results	Time	Results
<i>Escherichia coli</i> (MPN/100mL)								
Total Suspended Solids (mg/L)								
Total Phosphorus (mg/L)								
Total Nitrogen (mg/L)								

Notes:

Data Gaps

There were no data gaps at the Stringers Branch at Signal Mountain location during this monitoring period.



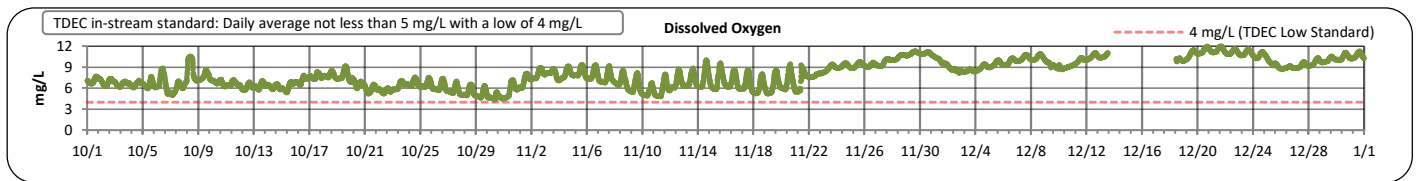
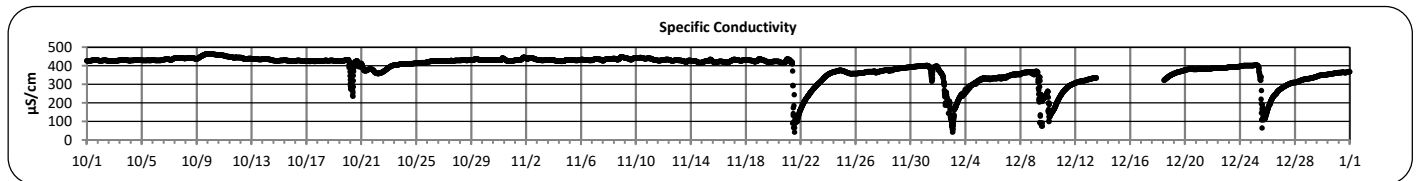
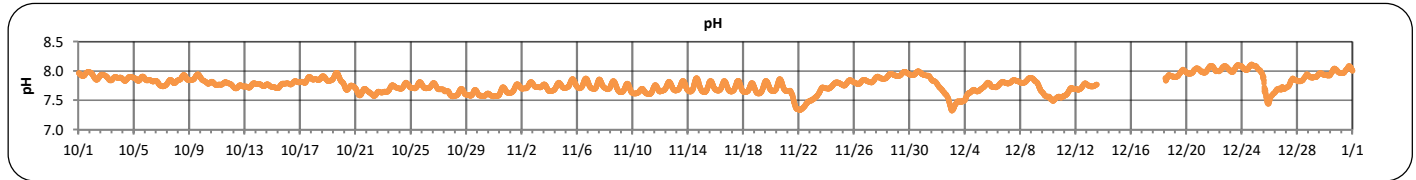
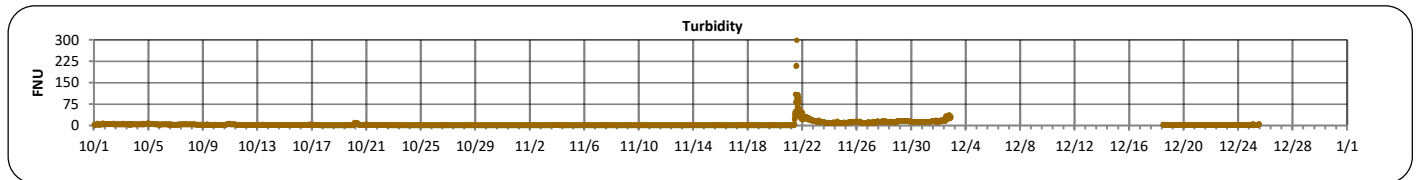
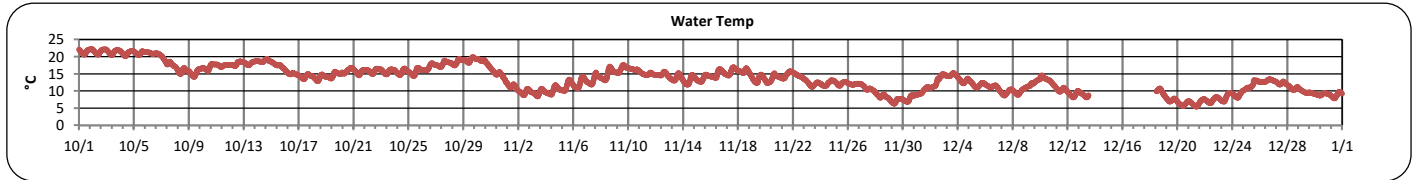
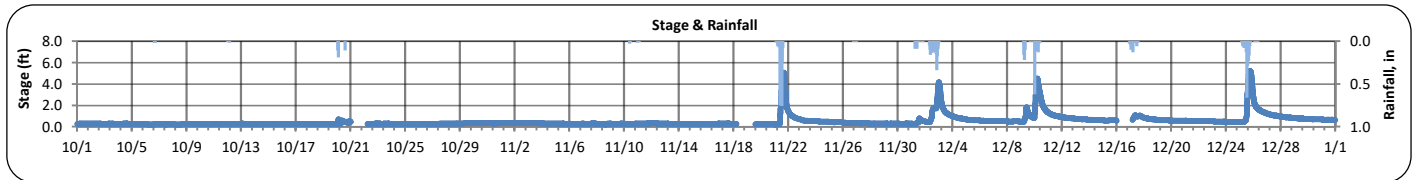
The City of Chattanooga and Hamilton County Joint Water Quality Monitoring Quarterly Report (October 1, 2023 - December 31, 2023)



Hamilton County
Water Quality Program

Friar Branch at Polymer Drive

PARAMETER	DESCRIPTION	CONTINUOUS WATER QUALITY PARAMETERS:	SUMMARY STATISTICS				
			MINIMUM OBSERVED	MAXIMUM OBSERVED	MEDIAN OBSERVED	MEAN OBSERVED	STANDARD DEVIATION
STREAM NAME:	Friar Branch	STAGE (FT):	0.2	5.2	0.3	0.5	0.6
LOCATION:	Polymer Drive Bridge	TEMPERATURE (°C):	5	22	14	14	4
TMDL/IMPAIRMENT:	<i>E. coli</i> , Siltation, Habitat Alteration	TURBIDITY (FNU):	1	298	2	4	9
		pH:	7.3	8.1	7.8	7.8	0.1
APPROX. DRAINAGE AREA:	20.7 square miles	SPECIFIC CONDUCTIVITY (µS/cm):	42	467	424	389	68
TOTAL NO. STORMS OVER 0.1 INCH:	9	DISSOLVED OXYGEN (mg/L):	4.4	12.0	7.8	8.0	1.9
MAX. DAILY RAINFALL:	2.9 inches						
TOTAL RAINFALL (FOR PERIOD):	9.8 inches						





**The City of Chattanooga and Hamilton County Joint Water Quality Monitoring
Quarterly Report (October 1, 2023 - December 31, 2023)
Friar Branch at Polymer Drive**



Explanation of Statistics:

MINIMUM OBSERVED	The minimum of the values recorded by the datasonde in 15 minute intervals.
MAXIMUM OBSERVED	The maximum of the values recorded by the datasonde in 15 minute intervals.
MEDIAN OBSERVED	The median of all the values recorded by the datasonde in 15 minute intervals.
MEAN OBSERVED	The average of all the values recorded by the datasonde in 15 minute intervals.
STANDARD DEVIATION	The standard deviation of all the values recorded by the datasonde in 15 minute intervals.

Sampled Data:

Analyte (units)	Dry Sample							
	11/7/2023							
	Time	Results	Time	Results	Time	Results	Time	Results
<i>Escherichia coli</i> (MPN/100mL)	10:50	82						
Total Suspended Solids (mg/L)	10:50	2.4						
Total Phosphorus (mg/L)	10:50	<0.500						
Total Nitrogen (mg/L)	10:50	1.45*						

*Value represents Nitrate/Nitrite concentrations only. TKN was below the detection limit of 0.5 mg/L.

Notes:

Data Gaps

Sonde data are unavailable between 12/13-12/18 due to a sonde deployment error.

Turbidity data were removed between 12/2-12/12 and 12/25-12/31 due to the sonde being buried in sediment.

Stage data are unavailable on 10/21-10/22, 11/18-11/19, and 12/16-12/17 due to equipment reporting issues.



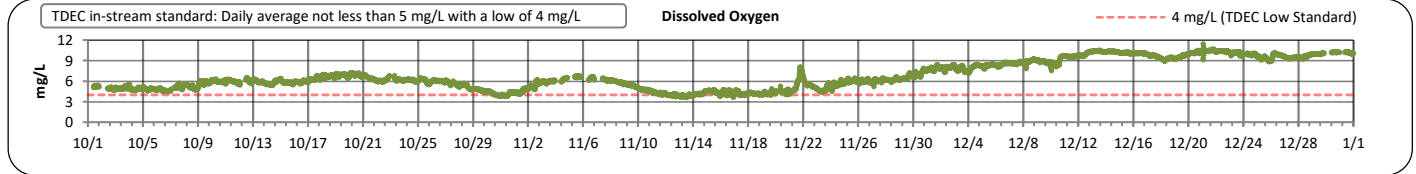
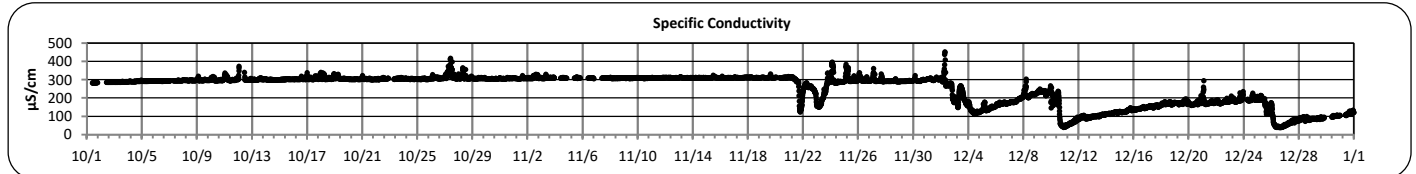
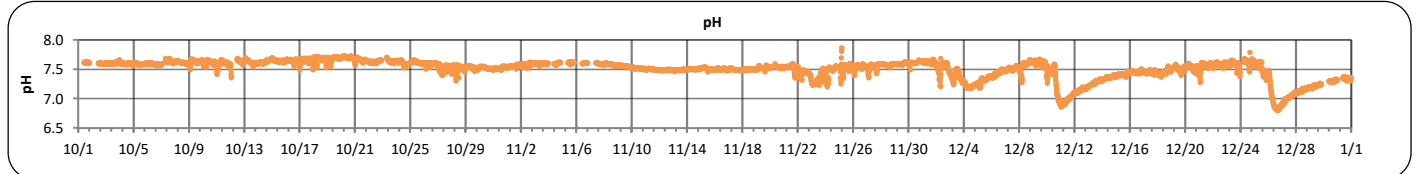
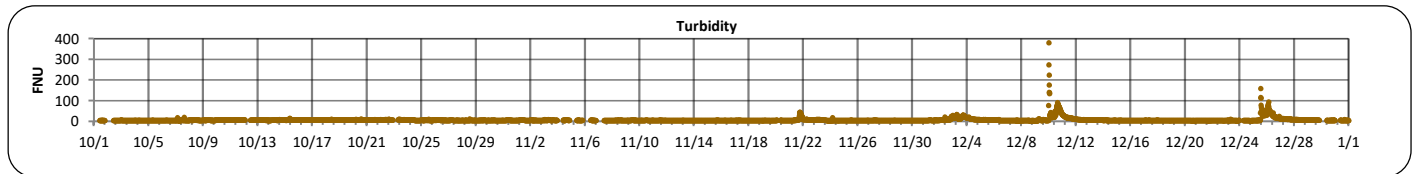
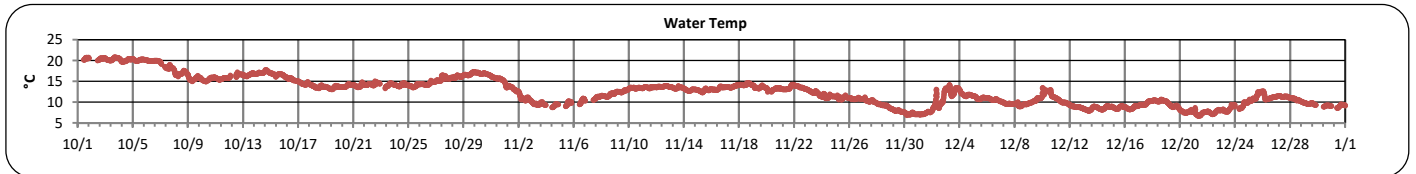
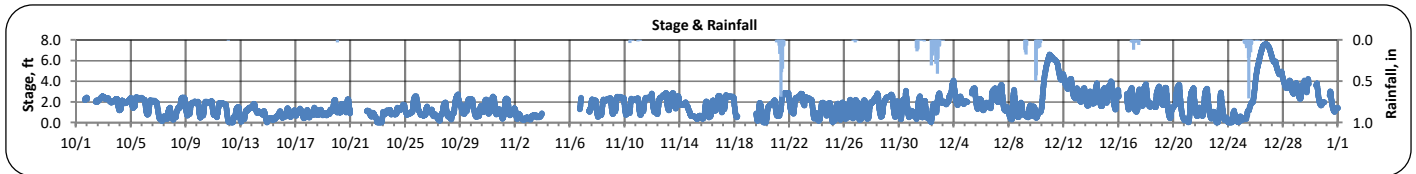
The City of Chattanooga and Hamilton County Joint Water Quality Monitoring Quarterly Report (October 1, 2023 - December 31, 2023)



Hamilton County
Water Quality Program

N. Chick Creek at Greenway Farms

PARAMETER	DESCRIPTION	CONTINUOUS WATER QUALITY PARAMETERS:	SUMMARY STATISTICS				
			MINIMUM OBSERVED	MAXIMUM OBSERVED	MEDIAN OBSERVED	MEAN OBSERVED	STANDARD DEVIATION
STREAM NAME:	N. Chick Creek	STAGE (FT):	0.0	7.6	1.5	1.7	1.3
LOCATION:	Greenway Farms Boat Launch	TEMPERATURE (°C):	7	21	13	13	3
TMDL/IMPAIRMENT:	pH, Siltation, Habitat Alteration	TURBIDITY (FNU):	2	381	4	6	10
		pH:	6.8	7.9	7.6	7.5	0.2
APPROX. DRAINAGE AREA:	117.4 square miles	SPECIFIC CONDUCTIVITY (µS/cm):	39	452	297	251	80
TOTAL NO. STORMS OVER 0.1 INCH:	8	DISSOLVED OXYGEN (mg/L):	3.7	11.5	6.2	6.9	2.1
MAX. DAILY RAINFALL:	2.4 inches						
TOTAL RAINFALL (FOR PERIOD):	10.1 inches						





**The City of Chattanooga and Hamilton County Joint Water Quality Monitoring
Quarterly Report (October 1, 2023 - December 31, 2023)
N. Chick Creek at Greenway Farms**



Explanation of Statistics:

MINIMUM OBSERVED	The minimum of the values recorded by the datasonde in 15 minute intervals.
MAXIMUM OBSERVED	The maximum of the values recorded by the datasonde in 15 minute intervals.
MEDIAN OBSERVED	The median of all the values recorded by the datasonde in 15 minute intervals.
MEAN OBSERVED	The average of all the values recorded by the datasonde in 15 minute intervals.
STANDARD DEVIATION	The standard deviation of all the values recorded by the datasonde in 15 minute intervals.

Sampled Data:

Analyte (units)	Dry Sample							
	11/7/2023							
	Time	Results	Time	Results	Time	Results	Time	Results
<i>Escherichia coli</i> (MPN/100mL)	10:45	190						
Total Suspended Solids (mg/L)	10:45	5						
Total Phosphorus (mg/L)	10:45	<0.500						
Total Nitrogen (mg/L)	10:45	0.497*						

*Value represents Nitrate/Nitrite concentrations only. TKN was below the detection limit of 0.5 mg/L.

Notes:

Data Gaps

Sonde data are periodically unavailable between 10/1-10/2, 11/4-11/7, and 12/29-12/31 due to equipment reporting issues.

Sonde data were removed on 10/7, 10/12, 10/23, 11/20, and 12/23-12/24 due to the sonde being unsubmerged.

Stage data are unavailable on 10/1-10/2, 10/20-10/22, 11/3-11/7, 11/18-11/19, 12/5, 12/16, and 12/29-12/31 due to equipment reporting issues.



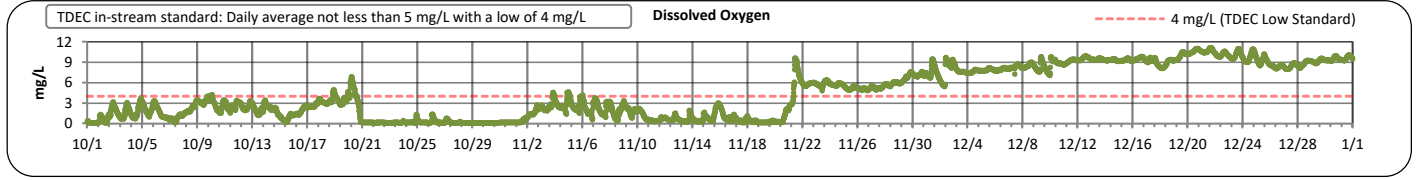
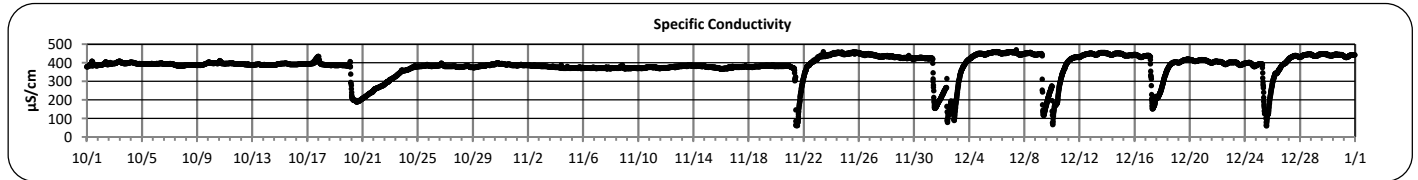
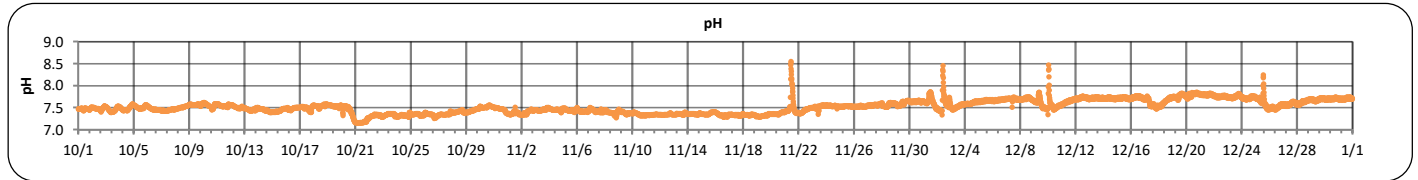
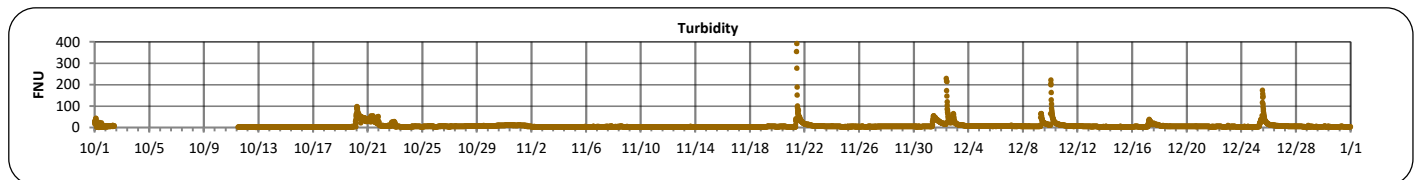
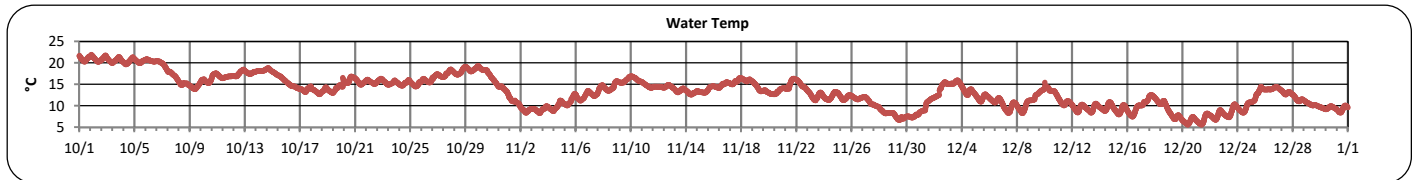
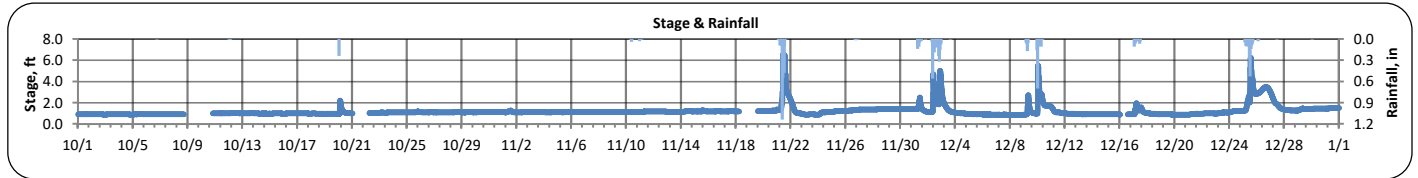
The City of Chattanooga and Hamilton County Joint Water Quality Monitoring Quarterly Report (October 1, 2023 - December 31, 2023)



Hamilton County
Water Quality Program

Dobbs Branch at Park City Park

PARAMETER	DESCRIPTION	CONTINUOUS WATER QUALITY PARAMETERS:	SUMMARY STATISTICS				
			MINIMUM OBSERVED	MAXIMUM OBSERVED	MEDIAN OBSERVED	MEAN OBSERVED	STANDARD DEVIATION
STREAM NAME:	Dobbs Branch	STAGE (FT):	0.8	6.6	1.1	1.2	0.5
LOCATION:	Park City Park	TEMPERATURE (°C):	6	22	14	13	4
TMDL/IMPAIRMENT:	<i>E. coli</i> , Siltation, Habitat Alteration	TURBIDITY (FNU):	2	393	5	8	14
		pH:	7.2	8.6	7.5	7.5	0.1
APPROX. DRAINAGE AREA:	6.2 square miles	SPECIFIC CONDUCTIVITY (µS/cm):	60	471	391	385	64
TOTAL NO. STORMS OVER 0.1 INCH:	8	DISSOLVED OXYGEN (mg/L):	0.1	11.2	3.2	4.5	3.7
MAX. DAILY RAINFALL:	3.1 inches						
TOTAL RAINFALL (FOR PERIOD):	10.0 inches						





**The City of Chattanooga and Hamilton County Joint Water Quality Monitoring
Quarterly Report (October 1, 2023 - December 31, 2023)
Dobbs Branch at Park City Park**



Explanation of Statistics:

MINIMUM OBSERVED	The minimum of the values recorded by the datasonde in 15 minute intervals.
MAXIMUM OBSERVED	The maximum of the values recorded by the datasonde in 15 minute intervals.
MEDIAN OBSERVED	The median of all the values recorded by the datasonde in 15 minute intervals.
MEAN OBSERVED	The average of all the values recorded by the datasonde in 15 minute intervals.
STANDARD DEVIATION	The standard deviation of all the values recorded by the datasonde in 15 minute intervals.

Sampled Data:

Analyte (units)	Dry Sample							
	11/7/2023							
	Time	Results	Time	Results	Time	Results	Time	Results
<i>Escherichia coli</i> (MPN/100mL)	09:55	40						
Total Suspended Solids (mg/L)	09:55	11						
Total Phosphorus (mg/L)	09:55	<0.500						
Total Nitrogen (mg/L)	09:55	0.137*						

*Value represents Nitrate/Nitrite concentrations only. TKN was below the detection limit of 0.5 mg/L.

Notes:

Data Gaps

Turbidity data are unavailable between 10/2-10/11 due to sensor failure.

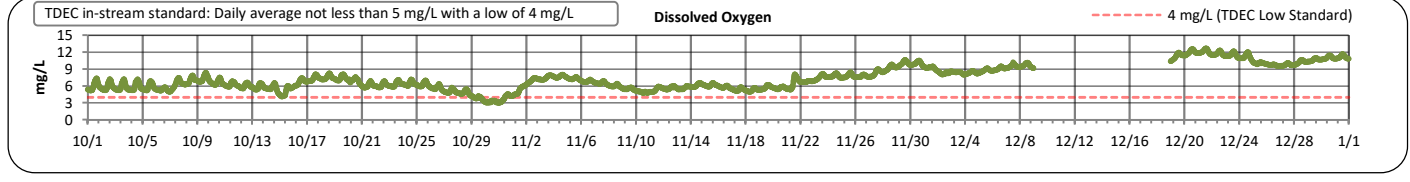
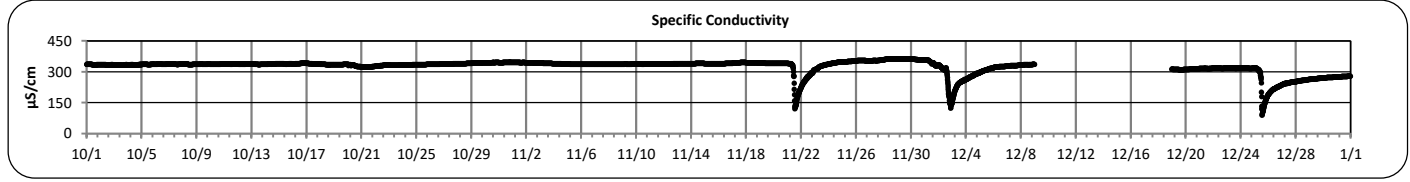
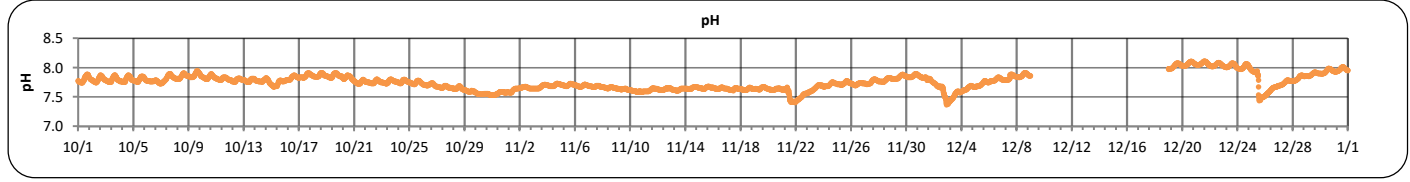
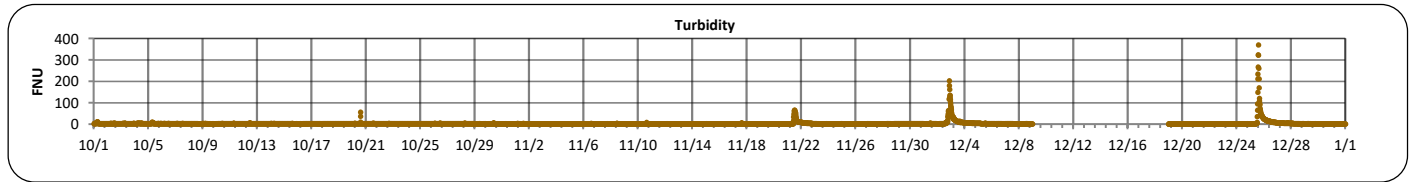
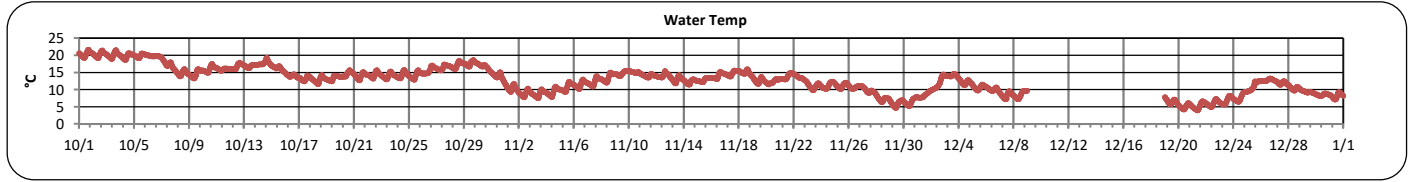
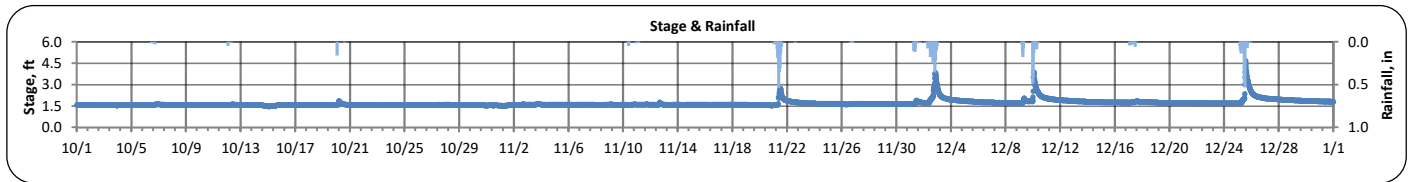
Stage data are unavailable between 10/8-10/10, 10/21-10/22, 11/18-11/19, and 12/16 due to equipment reporting issues.



The City of Chattanooga and Hamilton County Joint Water Quality Monitoring Quarterly Report (October 1, 2023 - December 31, 2023) Mountain Creek at Elementary School



PARAMETER	DESCRIPTION	CONTINUOUS WATER QUALITY PARAMETERS:	SUMMARY STATISTICS				
			MINIMUM OBSERVED	MAXIMUM OBSERVED	MEDIAN OBSERVED	MEAN OBSERVED	STANDARD DEVIATION
STREAM NAME:	Mountain Creek	STAGE (FT):	1.5	4.7	1.6	1.7	0.2
LOCATION:	Red Bank Elementary School	TEMPERATURE (°C):	4	22	13	13	4
TMDL/IMPAIRMENT:	<i>E. coli</i> , Siltation, Habitat Alteration	TURBIDITY (FNU):	1	416	2	3	13
		pH:	7.4	8.1	7.8	7.8	0.1
APPROX. DRAINAGE AREA:	5.5 square miles	SPECIFIC CONDUCTIVITY (µS/cm):	90	364	337	325	35
TOTAL NO. STORMS OVER 0.1 INCH:	8						
MAX. DAILY RAINFALL:	2.1 inches	DISSOLVED OXYGEN (mg/L):	3.0	12.7	6.9	7.4	2.1
TOTAL RAINFALL (FOR PERIOD):	9.0 inches						





**The City of Chattanooga and Hamilton County Joint Water Quality Monitoring
Quarterly Report (October 1, 2023 - December 31, 2023)
Mountain Creek at Elementary School**



Explanation of Statistics:

MINIMUM OBSERVED	The minimum of the values recorded by the datasonde in 15 minute intervals.
MAXIMUM OBSERVED	The maximum of the values recorded by the datasonde in 15 minute intervals.
MEDIAN OBSERVED	The median of all the values recorded by the datasonde in 15 minute intervals.
MEAN OBSERVED	The average of all the values recorded by the datasonde in 15 minute intervals.
STANDARD DEVIATION	The standard deviation of all the values recorded by the datasonde in 15 minute intervals.

Sampled Data:

Analyte (units)	Dry Sample							
	11/7/2023							
	Time	Results	Time	Results	Time	Results	Time	Results
<i>Escherichia coli</i> (MPN/100mL)	9:30	130						
Total Suspended Solids (mg/L)	9:30	2						
Total Phosphorus (mg/L)	9:30	<0.500						
Total Nitrogen (mg/L)	9:30	0.185*						

*Value represents Nitrate/Nitrite concentrations only. TKN was below the detection limit of 0.5 mg/L.

Notes:

Sonde data are unavailable between 12/9-12/18 due to station reconfiguration to include telemetry.