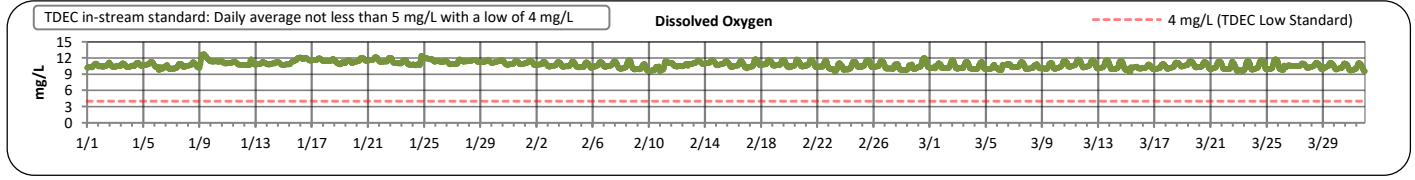
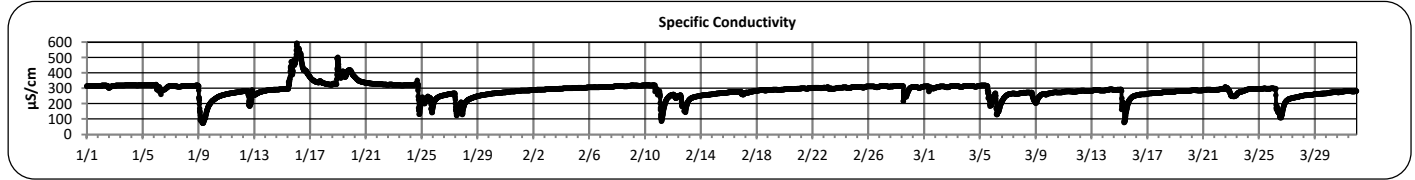
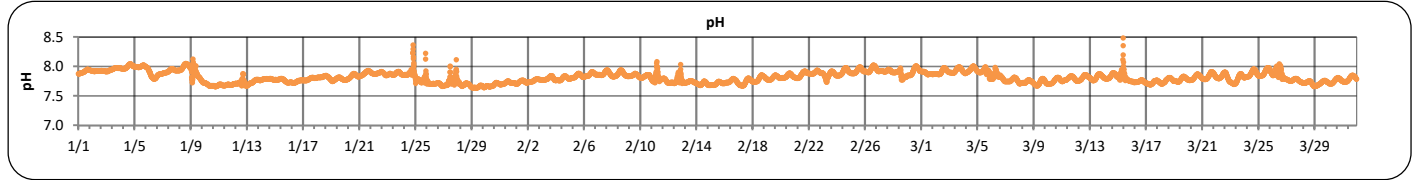
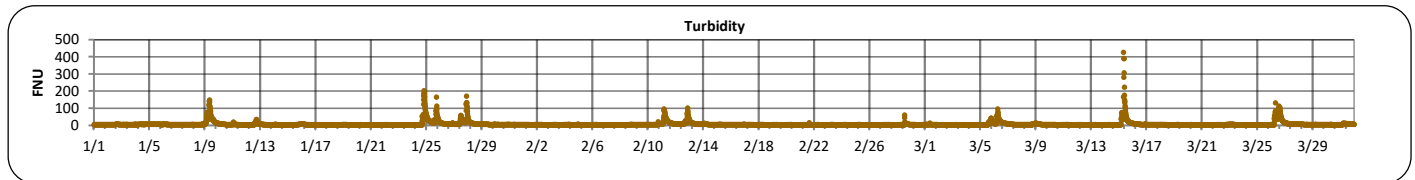
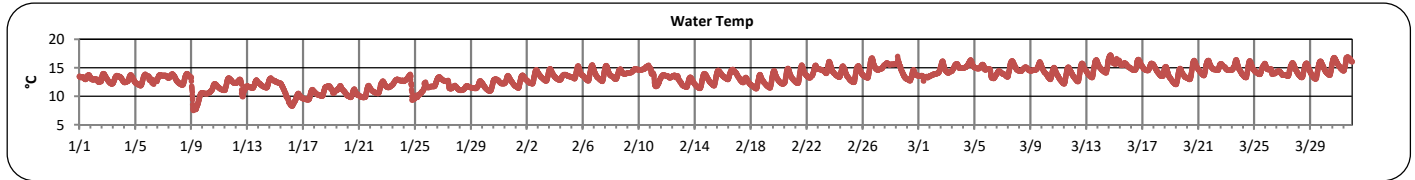
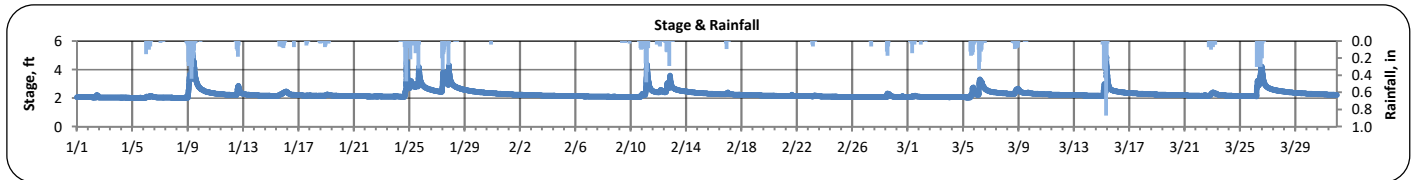




# The City of Chattanooga and Hamilton County Joint Water Quality Monitoring Quarterly Report (January 1, 2024 - March 31, 2024) Stringers Branch at Signal Mountain



PARAMETER	DESCRIPTION	CONTINUOUS WATER QUALITY PARAMETERS:	SUMMARY STATISTICS				
			MINIMUM OBSERVED	MAXIMUM OBSERVED	MEDIAN OBSERVED	MEAN OBSERVED	STANDARD DEVIATION
STREAM NAME:	Stringers Branch	STAGE (FT):	2.0	5.2	2.2	2.3	0.3
LOCATION:	Signal Mountain Rd	TEMPERATURE (°C):	8	17	14	13	2
TMDL/IMPAIRMENT:	<i>E. coli</i> , Siltation, Habitat Alteration	TURBIDITY (FNU):	2	427	4	8	16
		pH:	7.6	8.5	7.8	7.8	0.1
APPROX. DRAINAGE AREA:	5.7 square miles	SPECIFIC CONDUCTIVITY (µS/cm):	74	594	291	287	48
TOTAL NO. STORMS OVER 0.1 INCH:	23	DISSOLVED OXYGEN (mg/L):	9.4	12.7	10.8	10.8	0.6
MAX. DAILY RAINFALL:	2.6 inches						
TOTAL RAINFALL (FOR PERIOD):	18.4 inches						





**The City of Chattanooga and Hamilton County Joint Water Quality Monitoring  
Quarterly Report (January 1, 2024 - March 31, 2024)  
Stringers Branch at Signal Mountain**



**Explanation of Statistics:**

<b>MINIMUM OBSERVED</b>	The minimum of the values recorded by the datasonde in 15 minute intervals.
<b>MAXIMUM OBSERVED</b>	The maximum of the values recorded by the datasonde in 15 minute intervals.
<b>MEDIAN OBSERVED</b>	The median of all the values recorded by the datasonde in 15 minute intervals.
<b>MEAN OBSERVED</b>	The average of all the values recorded by the datasonde in 15 minute intervals.
<b>STANDARD DEVIATION</b>	The standard deviation of all the values recorded by the datasonde in 15 minute intervals.

**Sampled Data:** No samples were recorded at Stringers Branch at Signal Mountain during this monitoring period.

Analyte (units)								
	Time	Results	Time	Results	Time	Results	Time	Results
<i>Escherichia coli</i> (MPN/100mL)								
Total Suspended Solids (mg/L)								
Total Phosphorus (mg/L)								
Total Nitrogen (mg/L)								

**Notes:**

Data Gaps

There were no data gaps at the Stringers Branch at Signal Mountain location during this monitoring period.



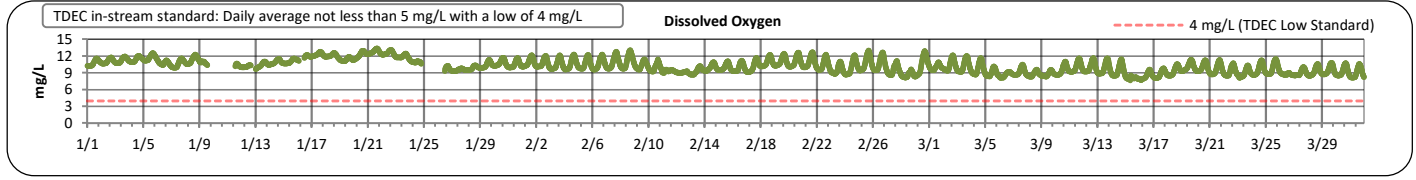
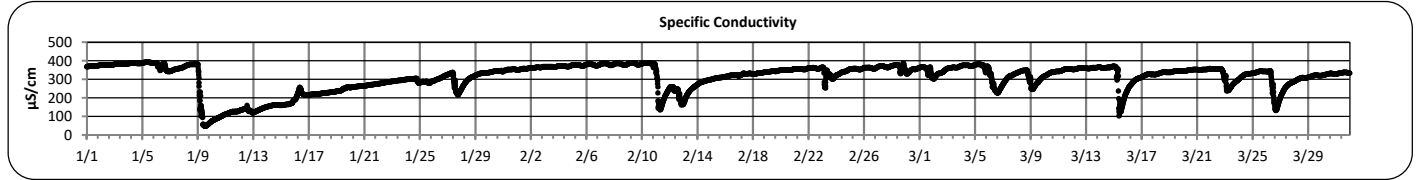
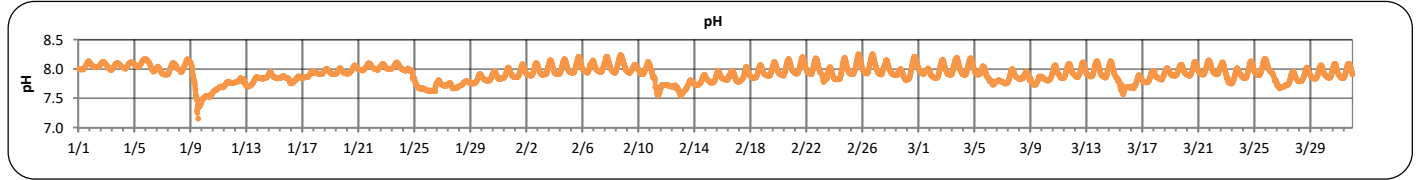
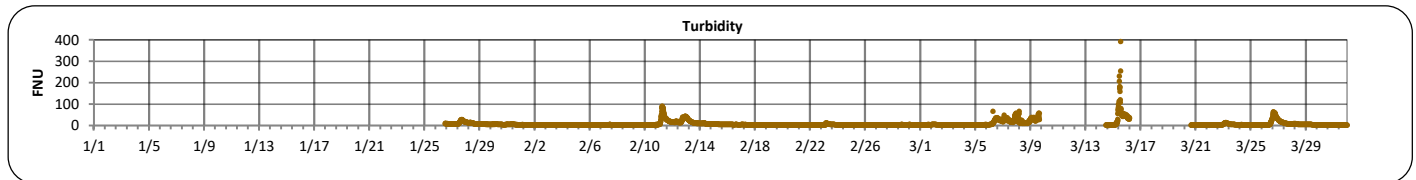
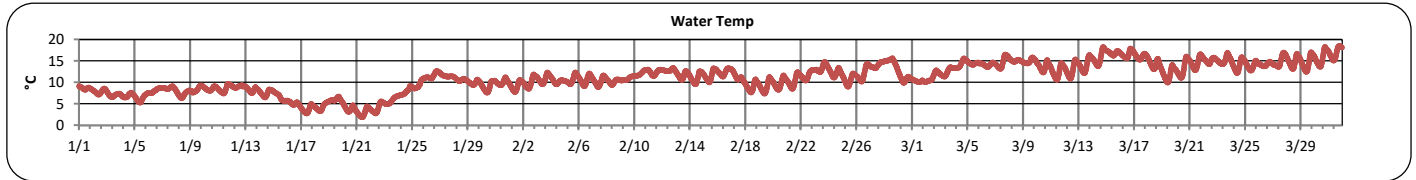
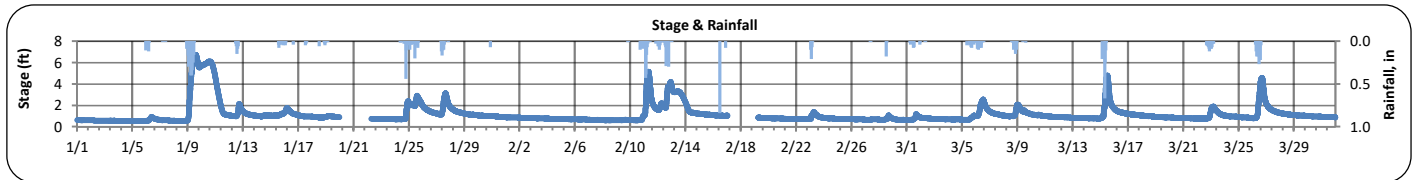
# The City of Chattanooga and Hamilton County Joint Water Quality Monitoring Quarterly Report (January 1, 2024 - March 31, 2024)



Hamilton County  
Water Quality Program

## Friar Branch at Polymer Drive

PARAMETER	DESCRIPTION	CONTINUOUS WATER QUALITY PARAMETERS:	SUMMARY STATISTICS				
			MINIMUM OBSERVED	MAXIMUM OBSERVED	MEDIAN OBSERVED	MEAN OBSERVED	STANDARD DEVIATION
STREAM NAME:	Friar Branch	STAGE (FT):	0.5	6.8	0.9	1.2	0.9
LOCATION:	Polymer Drive Bridge	TEMPERATURE (°C):	2	19	11	11	3
TMDL/IMPAIRMENT:	<i>E. coli</i> , Siltation, Habitat Alteration	TURBIDITY (FNU):	2	393	4	8	14
		pH:	7.2	8.3	7.9	7.9	0.1
APPROX. DRAINAGE AREA:	20.7 square miles	SPECIFIC CONDUCTIVITY (µS/cm):	48	394	337	313	72
TOTAL NO. STORMS OVER 0.1 INCH:	20	DISSOLVED OXYGEN (mg/L):	7.7	13.4	10.1	10.2	1.2
MAX. DAILY RAINFALL:	2.8 inches						
TOTAL RAINFALL (FOR PERIOD):	16.6 inches						





**The City of Chattanooga and Hamilton County Joint Water Quality Monitoring  
Quarterly Report (January 1, 2024 - March 31, 2024)  
Friar Branch at Polymer Drive**



**Explanation of Statistics:**

<b>MINIMUM OBSERVED</b>	The minimum of the values recorded by the datasonde in 15 minute intervals.
<b>MAXIMUM OBSERVED</b>	The maximum of the values recorded by the datasonde in 15 minute intervals.
<b>MEDIAN OBSERVED</b>	The median of all the values recorded by the datasonde in 15 minute intervals.
<b>MEAN OBSERVED</b>	The average of all the values recorded by the datasonde in 15 minute intervals.
<b>STANDARD DEVIATION</b>	The standard deviation of all the values recorded by the datasonde in 15 minute intervals.

**Sampled Data:**

Analyte (units)	Dry Sample							
	2/6/2024							
	Time	Results	Time	Results	Time	Results	Time	Results
<i>Escherichia coli</i> (MPN/100mL)	10:00	20						
Total Suspended Solids (mg/L)	10:00	5.2						
Total Phosphorus (mg/L)	10:00	<0.500						
Total Nitrogen (mg/L)	10:00	0.880*						

\*Value represents Nitrate/Nitrite concentrations only. TKN was below the detection limit of 0.5 mg/L.

**Notes:**

Data Gaps

Turbidity and portions of DO data were removed between 1/1-1/26 due to the sonde being buried in sediment.

Turbidity data were removed between 3/9-3/14 and 3/16-3/20 due to sensor fouling.

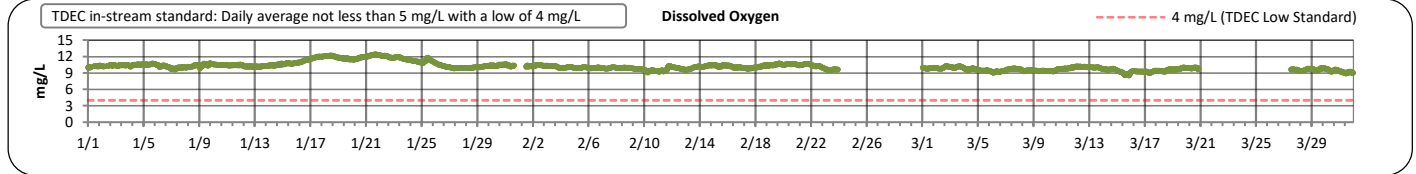
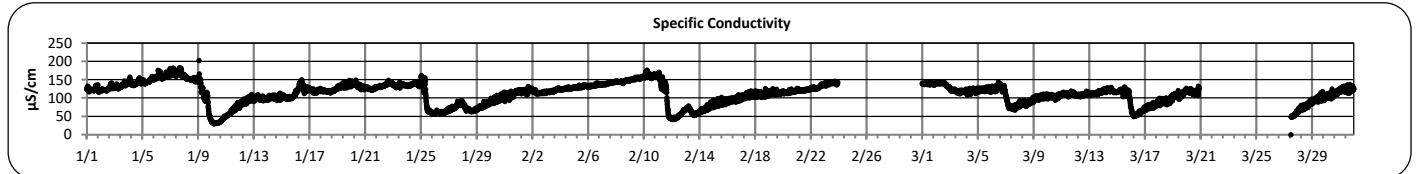
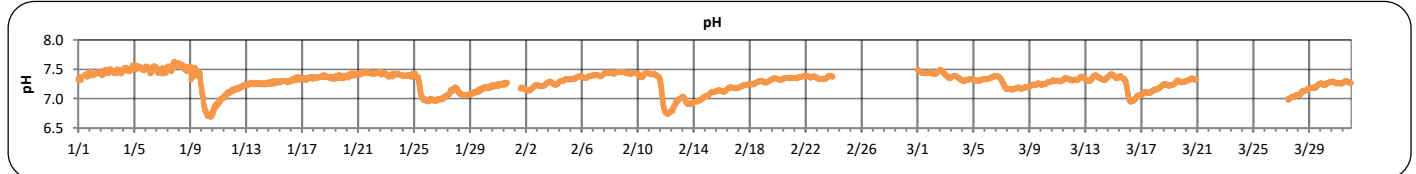
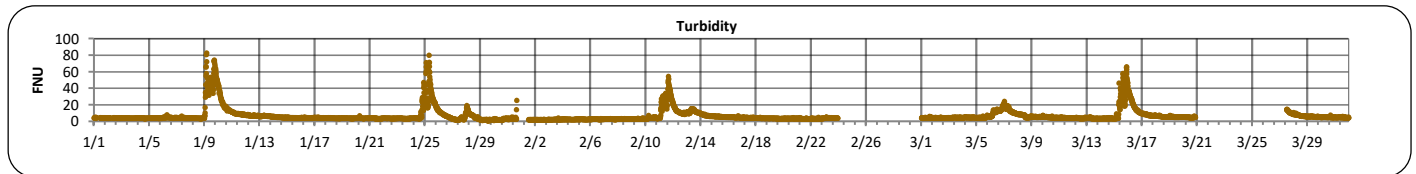
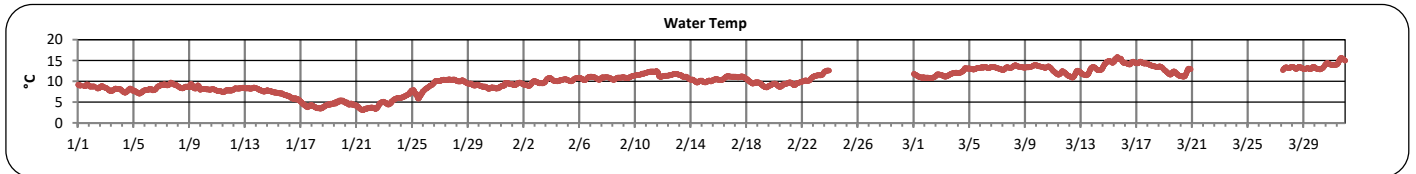
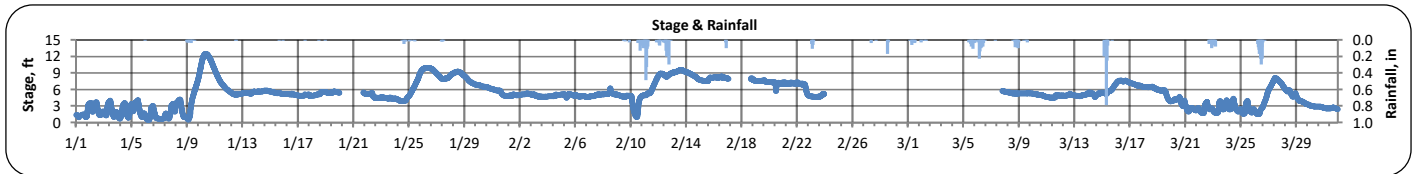
Stage data are unavailable on 1/19-1/22 and 2/17-2/19 due to equipment reporting issues.



# The City of Chattanooga and Hamilton County Joint Water Quality Monitoring Quarterly Report (January 1, 2024 - March 31, 2024) N. Chick Creek at Greenway Farms



PARAMETER	DESCRIPTION	CONTINUOUS WATER QUALITY PARAMETERS:	SUMMARY STATISTICS				
			MINIMUM OBSERVED	MAXIMUM OBSERVED	MEDIAN OBSERVED	MEAN OBSERVED	STANDARD DEVIATION
STREAM NAME:	N. Chick Creek	STAGE (FT):	0.5	12.5	5.1	5.3	2.2
LOCATION:	Greenway Farms Boat Launch	TEMPERATURE (°C):	3	16	10	10	3
TMDL/IMPAIRMENT:	pH, Siltation, Habitat Alteration	TURBIDITY (FNU):	1	83	4	7	8
		pH:	6.7	7.6	7.3	7.3	0.2
APPROX. DRAINAGE AREA:	117.4 square miles	SPECIFIC CONDUCTIVITY (µS/cm):	0	203	117	112	29
TOTAL NO. STORMS OVER 0.1 INCH:	24	DISSOLVED OXYGEN (mg/L):	8.6	12.5	10.2	10.3	0.7
MAX. DAILY RAINFALL:	2.9 inches						
TOTAL RAINFALL (FOR PERIOD):	16.6 inches						





**The City of Chattanooga and Hamilton County Joint Water Quality Monitoring  
Quarterly Report (January 1, 2024 - March 31, 2024)  
N. Chick Creek at Greenway Farms**



**Explanation of Statistics:**

<b>MINIMUM OBSERVED</b>	The minimum of the values recorded by the datasonde in 15 minute intervals.
<b>MAXIMUM OBSERVED</b>	The maximum of the values recorded by the datasonde in 15 minute intervals.
<b>MEDIAN OBSERVED</b>	The median of all the values recorded by the datasonde in 15 minute intervals.
<b>MEAN OBSERVED</b>	The average of all the values recorded by the datasonde in 15 minute intervals.
<b>STANDARD DEVIATION</b>	The standard deviation of all the values recorded by the datasonde in 15 minute intervals.

**Sampled Data:**

Analyte (units)	Dry Sample							
	2/6/2024							
	Time	Results	Time	Results	Time	Results	Time	Results
<i>Escherichia coli</i> (MPN/100mL)	10:55	60						
Total Suspended Solids (mg/L)	10:55	2						
Total Phosphorus (mg/L)	10:55	<0.500						
Total Nitrogen (mg/L)	10:55	0.569*						

\*Value represents Nitrate/Nitrite concentrations only. TKN was below the detection limit of 0.5 mg/L.

**Notes:**

Data Gaps

Sonde data are unavailable between 1/31-2/1, 2/23-2/29, and 3/20-3/27 due to equipment reporting issues.

Stage data are unavailable on 1/1-1/2, 1/19-1/21, 2/17-2/18, and 2/23-3/7 due to equipment reporting issues.

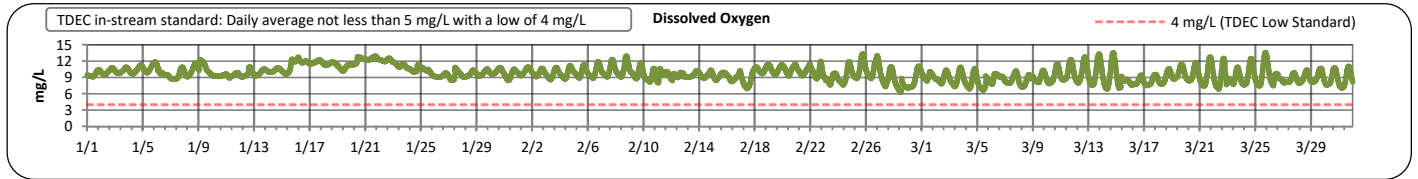
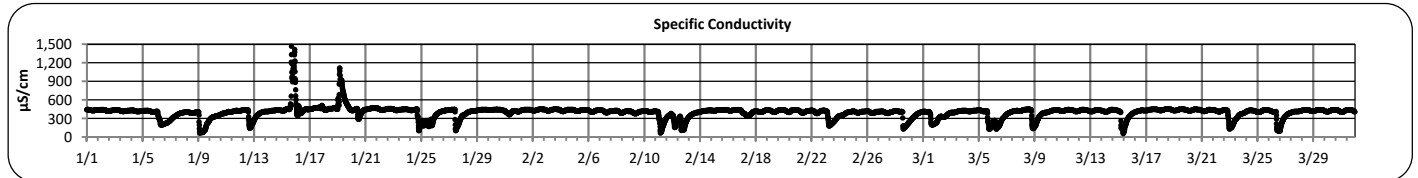
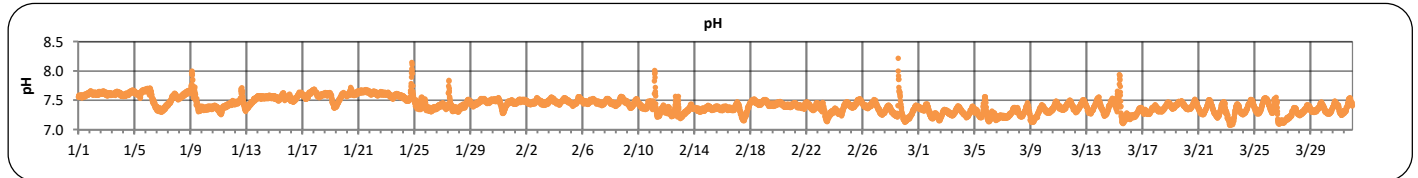
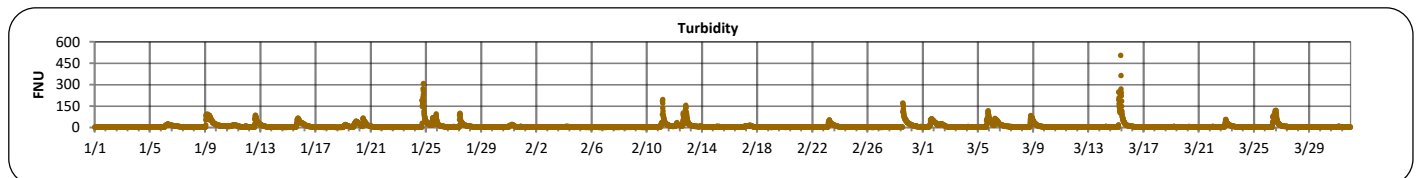
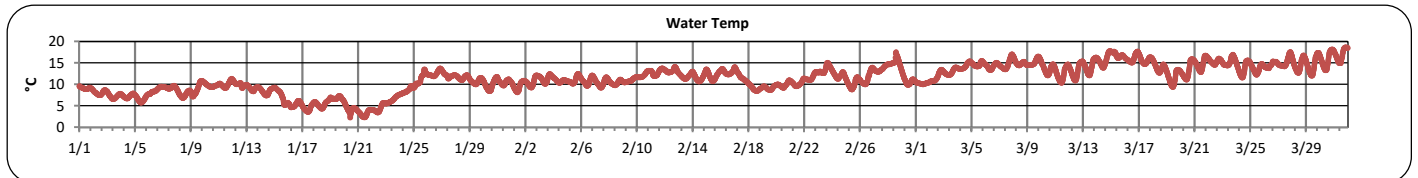
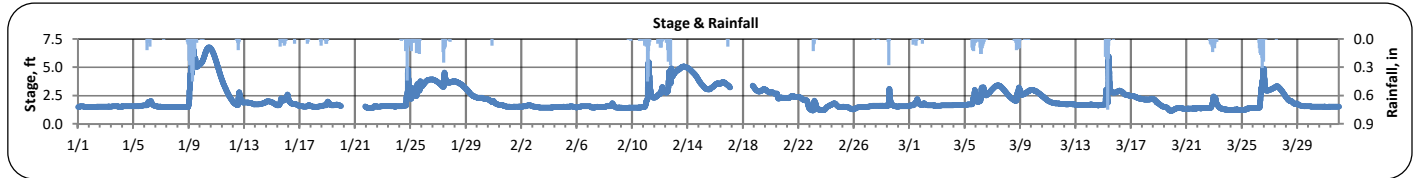


# The City of Chattanooga and Hamilton County Joint Water Quality Monitoring Quarterly Report (January 1, 2024 - March 31, 2024)

## Dobbs Branch at Park City Park



PARAMETER	DESCRIPTION	CONTINUOUS WATER QUALITY PARAMETERS:	SUMMARY STATISTICS				
			MINIMUM OBSERVED	MAXIMUM OBSERVED	MEDIAN OBSERVED	MEAN OBSERVED	STANDARD DEVIATION
STREAM NAME:	Dobbs Branch	STAGE (FT):	1.1	6.8	1.7	2.2	1.0
LOCATION:	Park City Park	TEMPERATURE (°C):	2	19	11	11	3
TMDL/IMPAIRMENT:	<i>E. coli</i> , Siltation, Habitat Alteration	TURBIDITY (FNU):	2	505	4	10	20
		pH:	7.1	8.2	7.4	7.4	0.1
APPROX. DRAINAGE AREA:	6.2 square miles	SPECIFIC CONDUCTIVITY (µS/cm):	55	1,471	421	399	93
TOTAL NO. STORMS OVER 0.1 INCH:	22	DISSOLVED OXYGEN (mg/L):	6.3	13.6	9.7	9.8	1.3
MAX. DAILY RAINFALL:	2.7 inches						
TOTAL RAINFALL (FOR PERIOD):	15.9 inches						





**The City of Chattanooga and Hamilton County Joint Water Quality Monitoring  
Quarterly Report (January 1, 2024 - March 31, 2024)  
Dobbs Branch at Park City Park**



**Explanation of Statistics:**

<b>MINIMUM OBSERVED</b>	The minimum of the values recorded by the datasonde in 15 minute intervals.
<b>MAXIMUM OBSERVED</b>	The maximum of the values recorded by the datasonde in 15 minute intervals.
<b>MEDIAN OBSERVED</b>	The median of all the values recorded by the datasonde in 15 minute intervals.
<b>MEAN OBSERVED</b>	The average of all the values recorded by the datasonde in 15 minute intervals.
<b>STANDARD DEVIATION</b>	The standard deviation of all the values recorded by the datasonde in 15 minute intervals.

**Sampled Data:**

Analyte (units)	Dry Sample							
	2/8/2024							
	Time	Results	Time	Results	Time	Results	Time	Results
<i>Escherichia coli</i> (MPN/100mL)	09:30	370						
Total Suspended Solids (mg/L)	09:30	16						
Total Phosphorus (mg/L)	09:30	<0.500						
Total Nitrogen (mg/L)	09:30	1.280*						

\*Value represents Nitrate/Nitrite concentrations only. TKN was below the detection limit of 0.5 mg/L.

**Notes:**

Data Gaps

Stage data are unavailable between 1/20-1/21 and 2/17-2/18 due to equipment reporting issues.

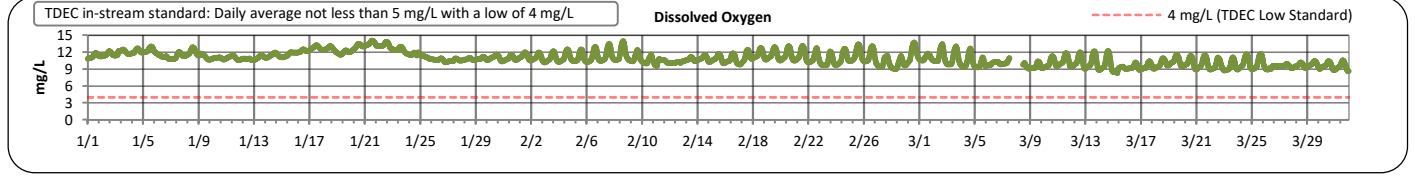
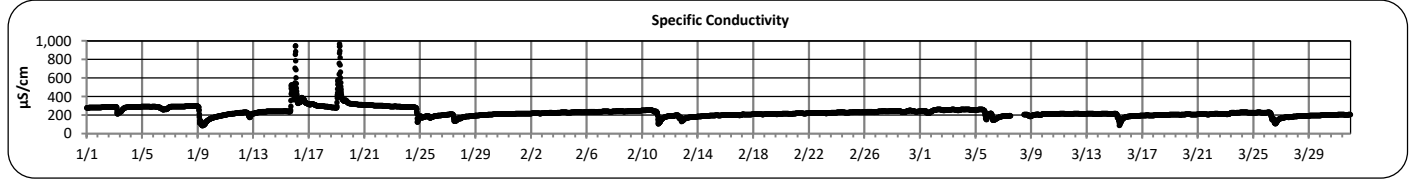
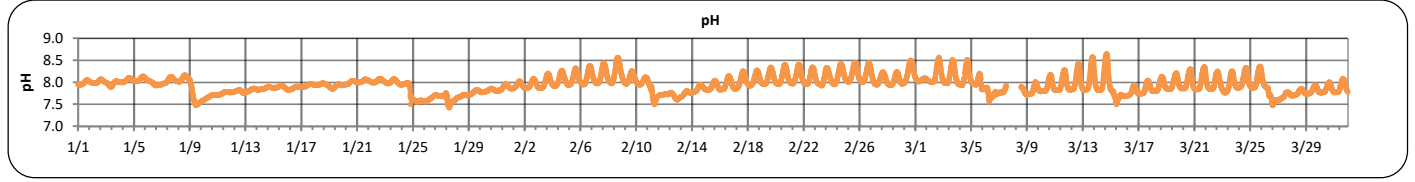
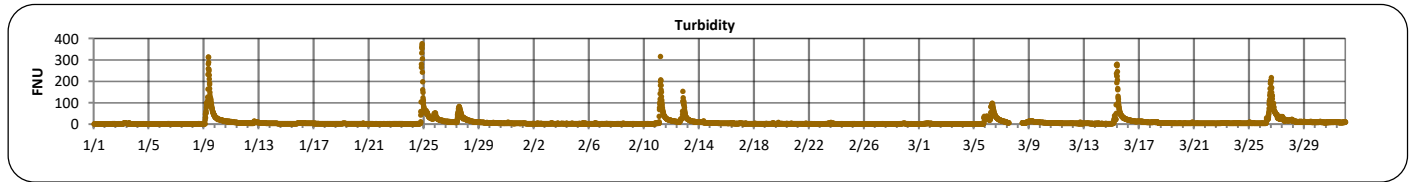
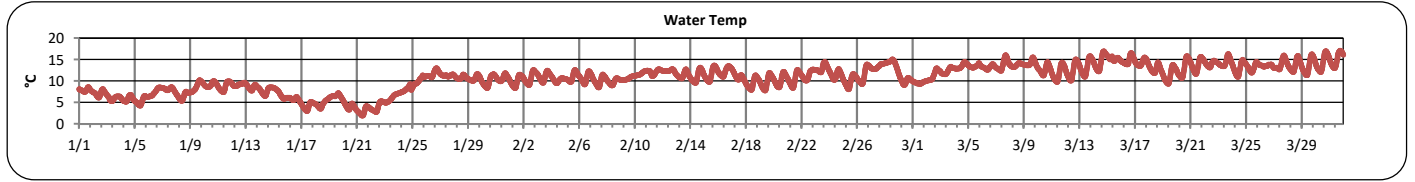
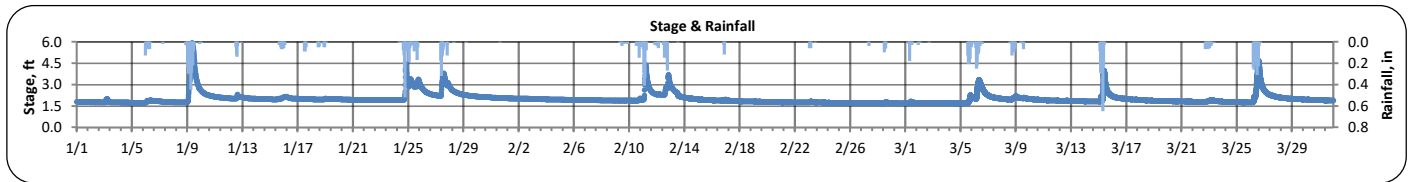




# The City of Chattanooga and Hamilton County Joint Water Quality Monitoring Quarterly Report (January 1, 2024 - March 31, 2024) Mountain Creek at Elementary School



PARAMETER	DESCRIPTION	CONTINUOUS WATER QUALITY PARAMETERS:	SUMMARY STATISTICS				
			MINIMUM OBSERVED	MAXIMUM OBSERVED	MEDIAN OBSERVED	MEAN OBSERVED	STANDARD DEVIATION
STREAM NAME:	Mountain Creek	STAGE (FT):	1.7	6.0	1.9	1.9	0.3
LOCATION:	Red Bank Elementary School	TEMPERATURE (°C):	2	17	11	11	3
TMDL/IMPAIRMENT:	<i>E. coli</i> , Siltation, Habitat Alteration	TURBIDITY (FNU):	1	375	3	9	23
		pH:	7.4	8.7	8.0	8.0	0.2
APPROX. DRAINAGE AREA:	5.5 square miles	SPECIFIC CONDUCTIVITY (µS/cm):	86	971	220	231	54
TOTAL NO. STORMS OVER 0.1 INCH:	23						
MAX. DAILY RAINFALL:	2.6 inches	DISSOLVED OXYGEN (mg/L):	8.3	14.1	10.8	10.9	1.1
TOTAL RAINFALL (FOR PERIOD):	17.4 inches						





**The City of Chattanooga and Hamilton County Joint Water Quality Monitoring  
Quarterly Report (January 1, 2024 - March 31, 2024)  
Mountain Creek at Elementary School**



**Explanation of Statistics:**

<b>MINIMUM OBSERVED</b>	The minimum of the values recorded by the datasonde in 15 minute intervals.
<b>MAXIMUM OBSERVED</b>	The maximum of the values recorded by the datasonde in 15 minute intervals.
<b>MEDIAN OBSERVED</b>	The median of all the values recorded by the datasonde in 15 minute intervals.
<b>MEAN OBSERVED</b>	The average of all the values recorded by the datasonde in 15 minute intervals.
<b>STANDARD DEVIATION</b>	The standard deviation of all the values recorded by the datasonde in 15 minute intervals.

**Sampled Data:**

Analyte (units)	Dry Sample							
	2/6/2024							
	Time	Results	Time	Results	Time	Results	Time	Results
<i>Escherichia coli</i> (MPN/100mL)	9:55	220						
Total Suspended Solids (mg/L)	9:55	5						
Total Phosphorus (mg/L)	9:55	<0.500						
Total Nitrogen (mg/L)	9:55	0.439*						

\*Value represents Nitrate/Nitrite concentrations only. TKN was below the detection limit of 0.5 mg/L.

**Notes:**

Sonde data are unavailable between 3/7-3/8 and the sonde was replaced on 3/8 due to erratic measurements.