

# COMMUNITY HEALTHBOOK HOMEPAGE

Community HealthBook

Secure | https://www.communityhealthbook.com

ERIN BROCKOVICH

Register

About

Sign In

COMMUNITY HEALTHBOOK

Analyze Map | See What's Trending

Start Now

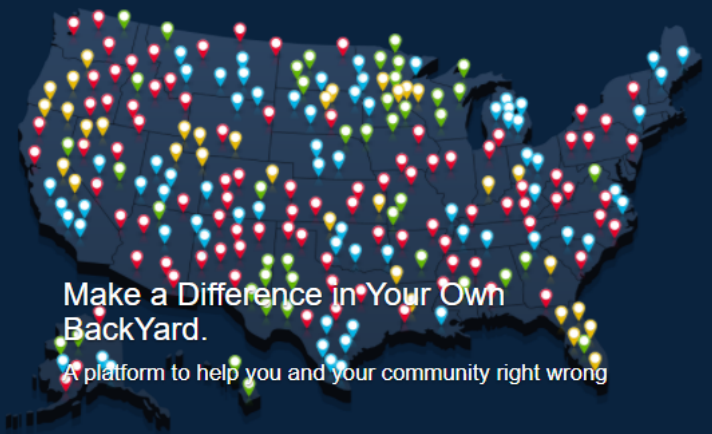
## How It Works!

Community Healthbook is a website created by Erin Brockovich to enable individuals and communities to post and share information about not only environmental but medical device, whistleblower and pharmaceutical drugs gone wrong issues in your community.

The site allows individuals to post and share information with Erin and other community members for the purpose of allowing communities to better harness information that will provide individuals and their families with additional data and information that will aid them in their quest for solutions.

To learn more about Community Healthbook


Start Now



**Make a Difference in Your Own BackYard.**


A platform to help you and your community right wrong

Tools to drive awareness about your issue and make a difference.




### REPORT ISSUES TO ERIN

Using our easy to use forms you can report an issue about your community environmental concerns and health issues



### ANALYZE THE MAP DATA

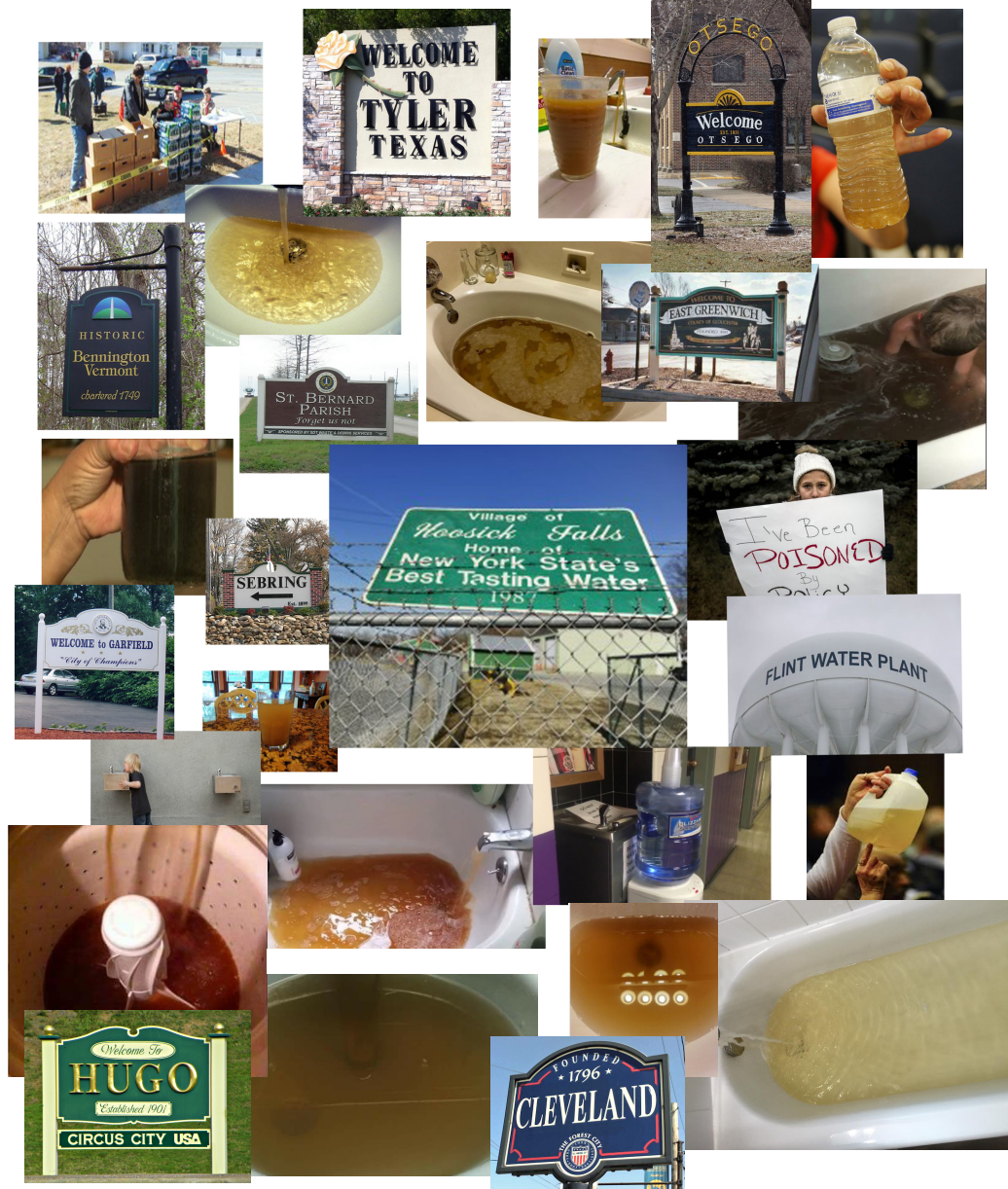
View the map and drill-down/filter by topic area and type of reported issue to view specific details and information



### SEE WHAT'S TRENDING

Stay up-to-date and see what's being reported by topic area and by geographic region to view daily trending information

# THIS IS WHAT PEOPLE REPORT TO ME EVERYDAY



Martin County,  
Kentucky



Richmond  
County, NC



Harrisburg,  
NC



Harrisburg,  
NC



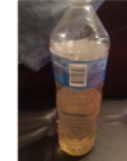
Compton,  
CA



Bradford,  
Arkansas



Pascoag,  
RI



Stillwater,  
OK



St. Joseph,  
LA



St. Joseph,  
LA



Colorado Springs, CO



Pascoag, RI



Springdale, PA



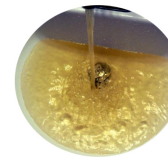
Tyler, Texas



GARDENA, CALIFORNIA



ST. BERNARD PARISH, LA



REDDING, CALIFORNIA



HUGO, OKLAHOMA



MINT HILL, NC



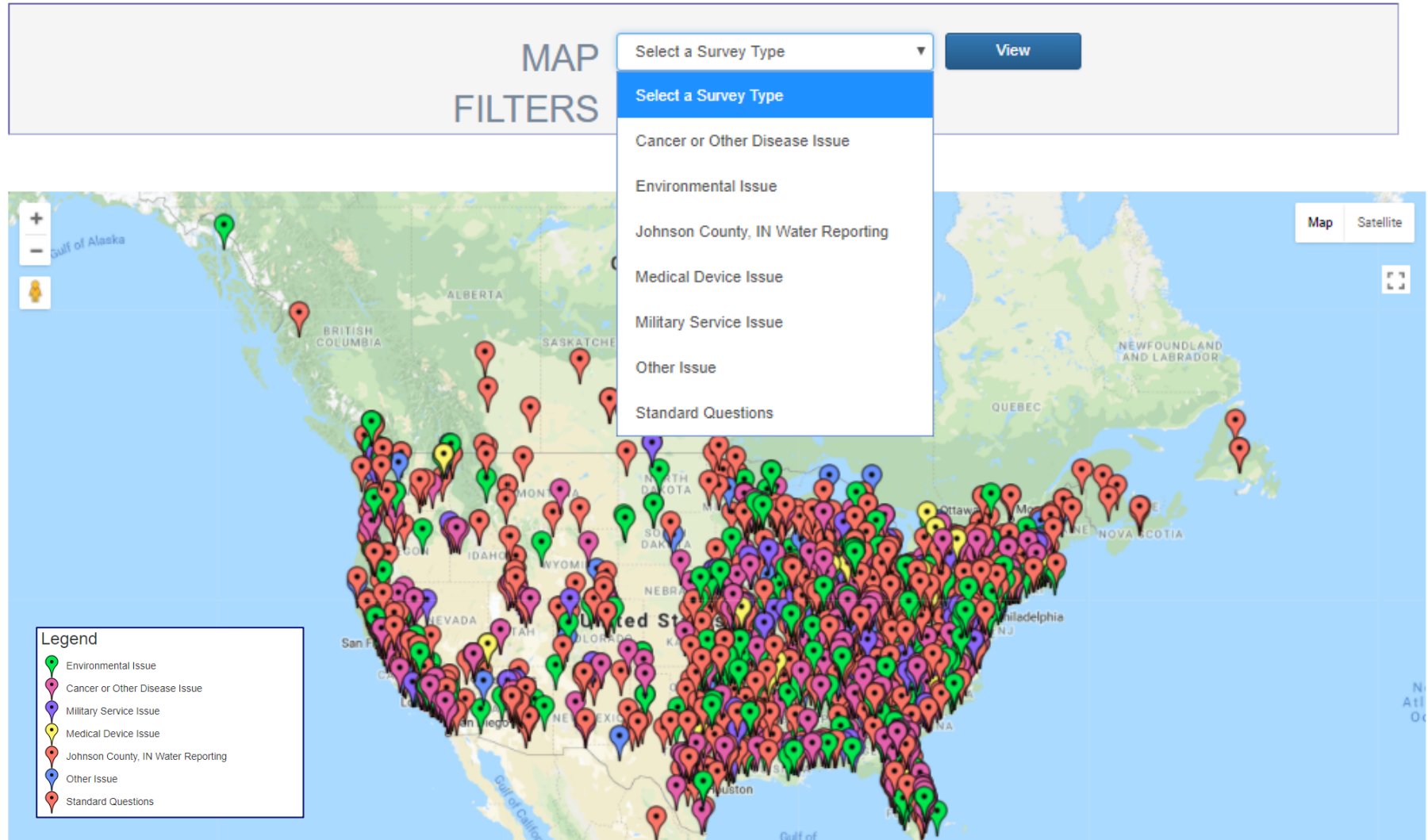
WEST MONROE, LOUISIANA



MANHATTAN, NEW YORK



# PUBLIC COMMUNITY MAP VIEW

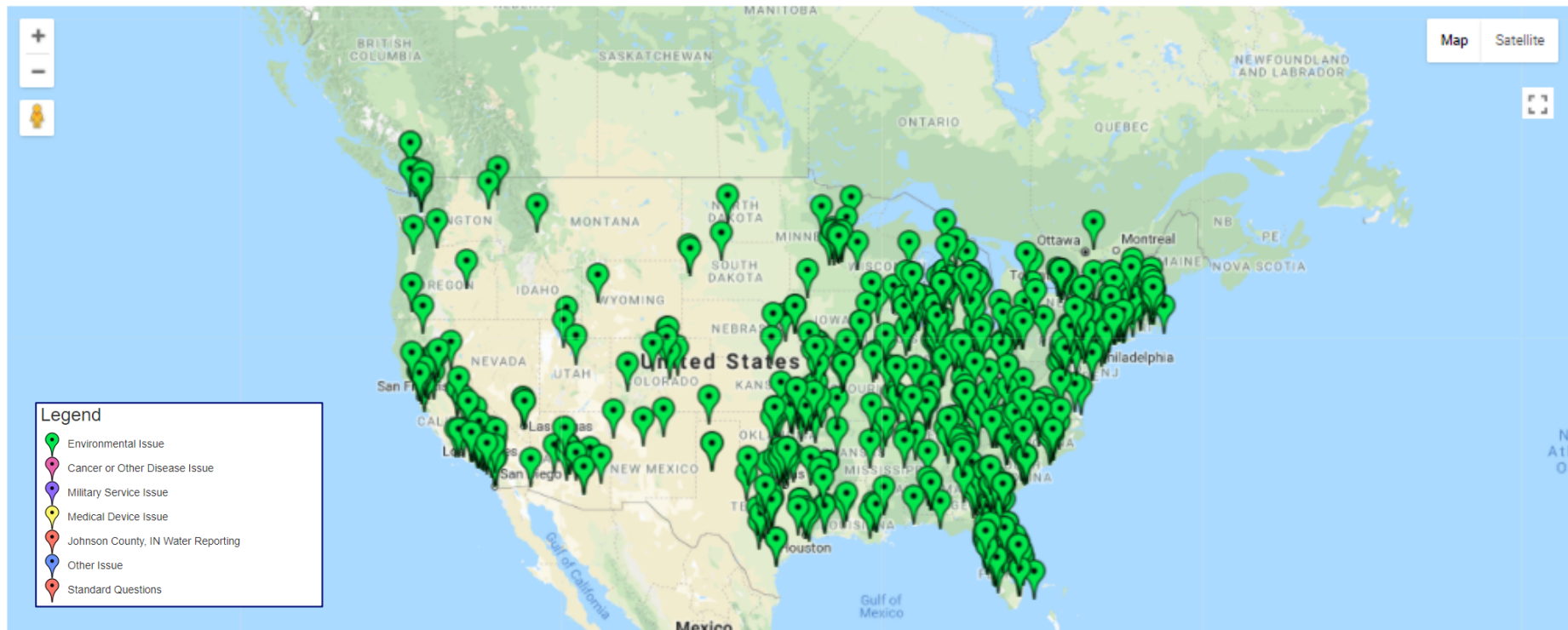


# PUBLIC COMMUNITY MAP VIEW – ENVIRONMENTAL ISSUES

MAP  
FILTERS

Environmental Issue ▼

View



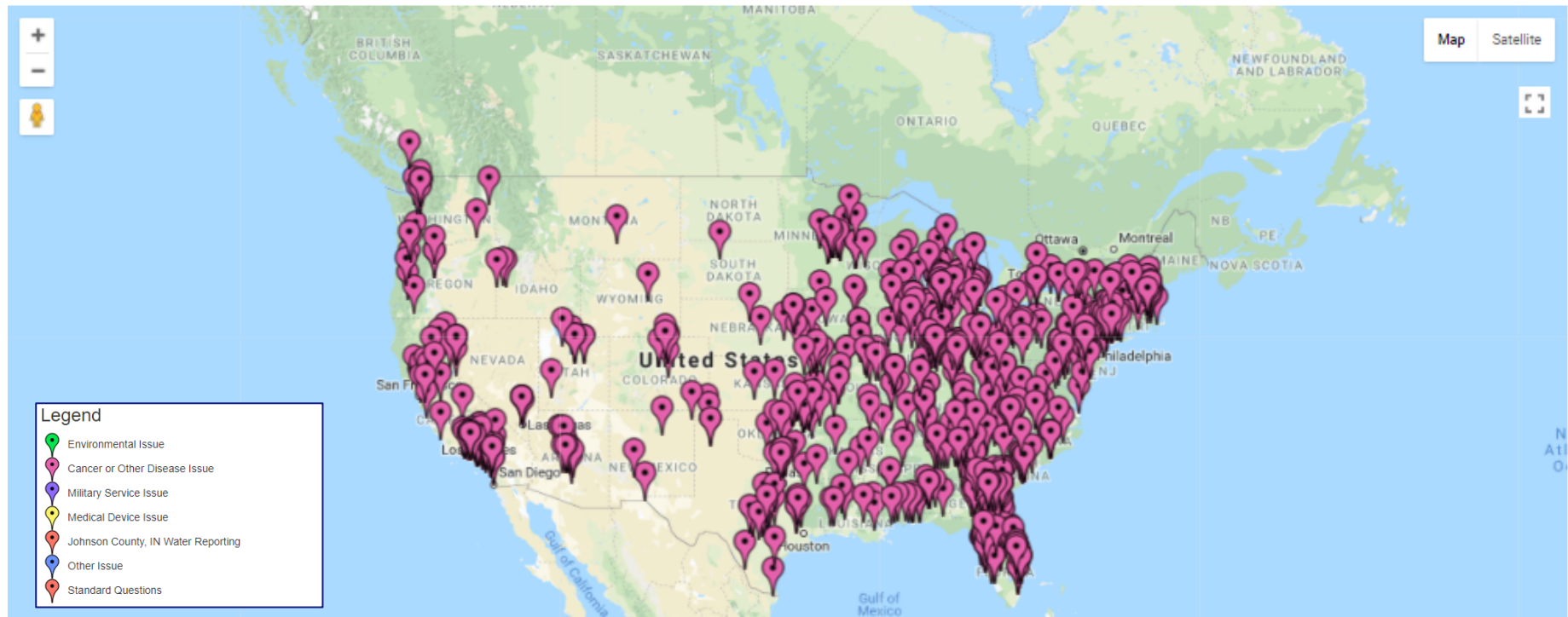


# PUBLIC COMMUNITY MAP VIEW – CANCER OR OTHER DISEASE

MAP  
FILTERS

Cancer or Other Disease Issue ▼

View



# PUBLIC COMMUNITY MAP VIEW – MILITARY SERVICE ISSUES

MAP  
FILTERS

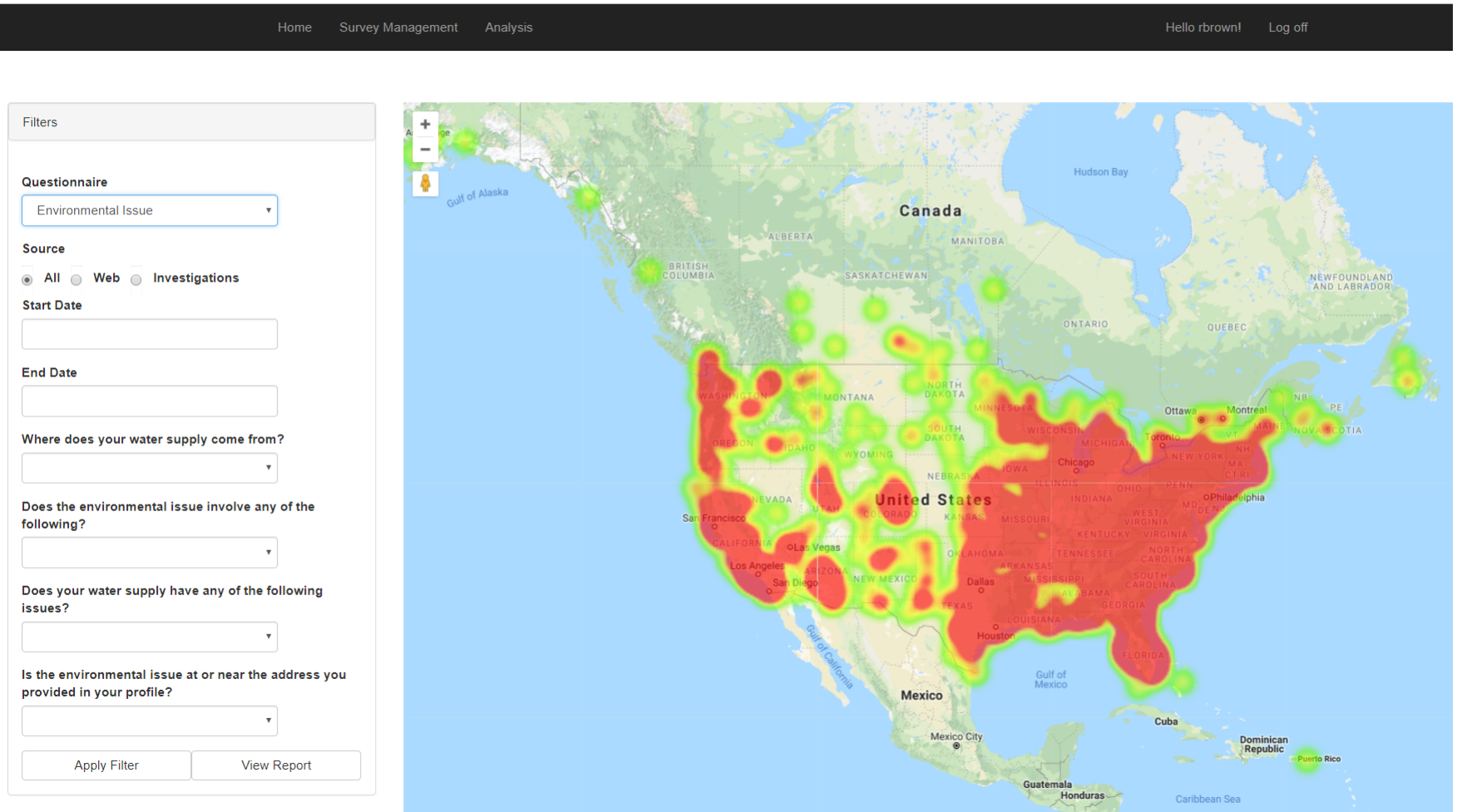
Military Service Issue ▼

View



# HEAT MAP

A representation of data in the form of a map in which data values are represented as colors.





# HEAT MAP (WITH FILTERING)

- Filter by question type (e.g. Environmental Issue)
- Dates (e.g. All Environmental Issues in January and February 2018)

**Filters**

**Questionnaire**  

Environmental Issue

**Source**  
☒ All ☐ Web ☐ Investigations

**Start Date**  

01/01/18

**End Date**  

02/28/18

**Where does your water supply come from?**

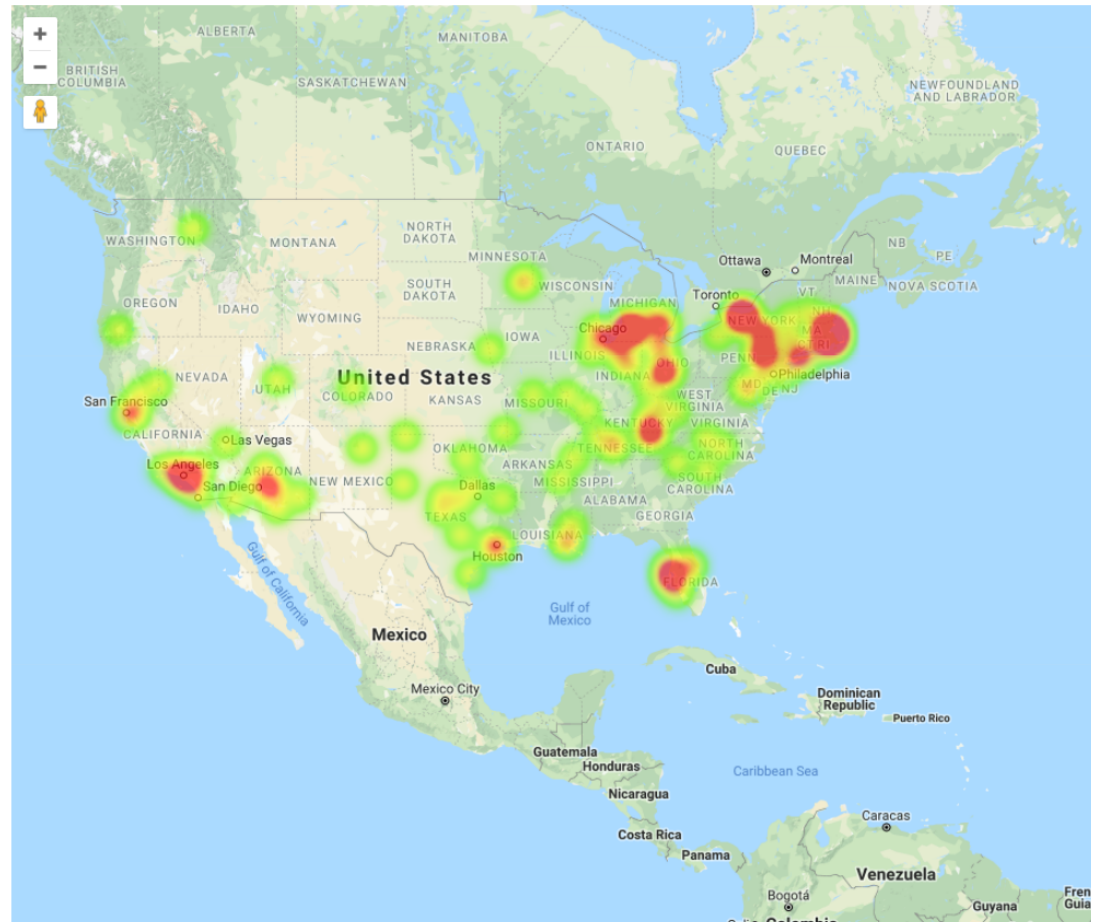
**Does the environmental issue involve any of the following?**

**Does your water supply have any of the following issues?**

**Is the environmental issue at or near the address you provided in your profile?**

Apply Filter

View Report



# CLUSTER MAP

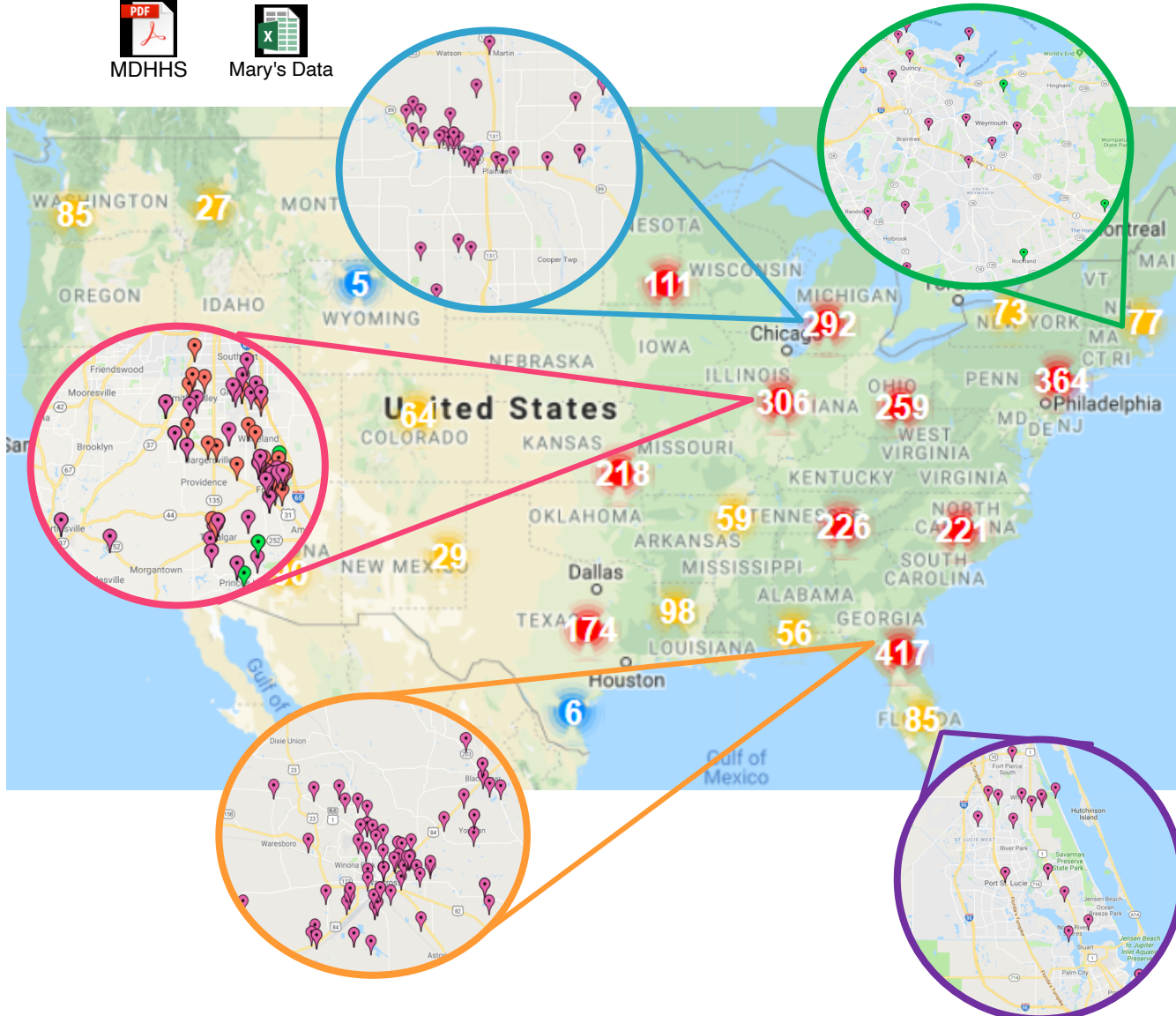
**Cluster analysis** to identify the locations of statistically significant hot spots, cold spots, spatial outliers and similar situations.



MDHHS



Mary's Data



## Quincy, MA

- 48 reports
- P&G factory
- Various cancers, high number of lung cancer

## Otsego, MI

- 68 reports
- 602 reports Alamo Health Survey
- Paper mills on river

## Johnson County, IN

- 105 Reports
- Childhood cancers
- Contaminated water

## Waycross, GA

- 144 reports
- CSX
- High number of childhood cancers

## Port St. Lucie, FL

- 40 reports
- Nuclear power plant
- Glioblastoma cluster

# CONTACTS FOR ADDITIONAL INFORMATION

---

## **Community Healthbook**

[www.communityhealthbook.com](http://www.communityhealthbook.com)

[www.Brockovich.com](http://www.Brockovich.com)

**Erin Brockovich**

[Erin@Brockovich.com](mailto:Erin@Brockovich.com)

## **CHB Data Services and MIP™ Application Information**

[chbinfo@macksonconsulting.com](mailto:chbinfo@macksonconsulting.com)