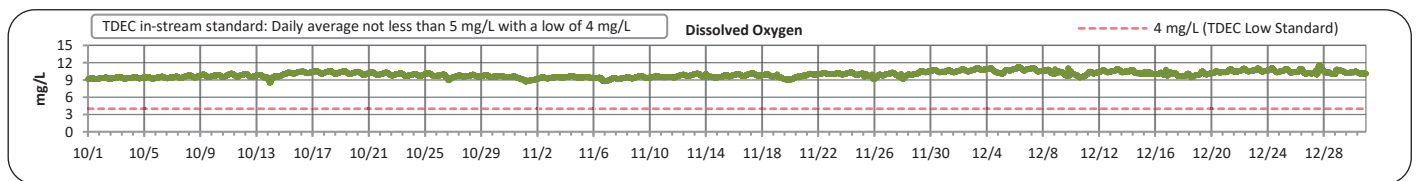
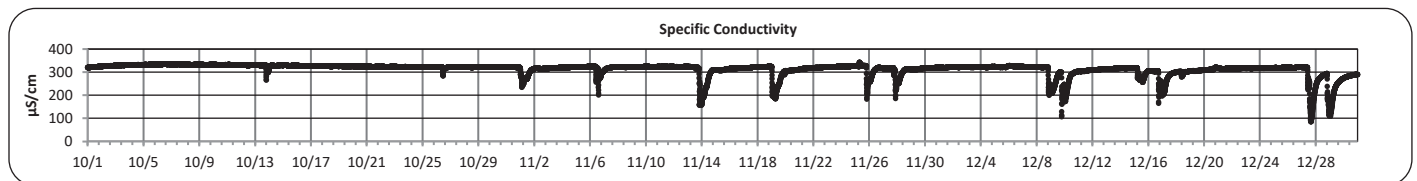
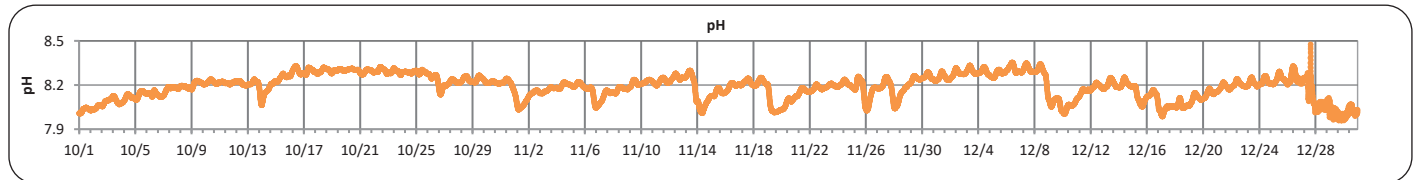
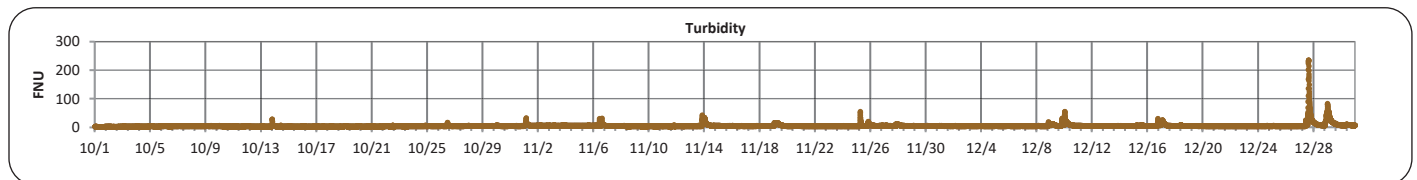
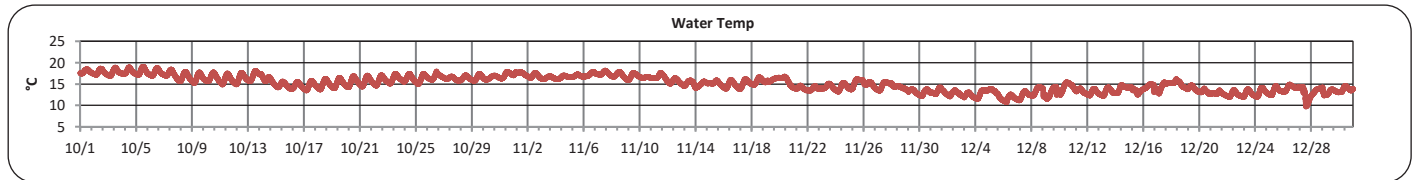
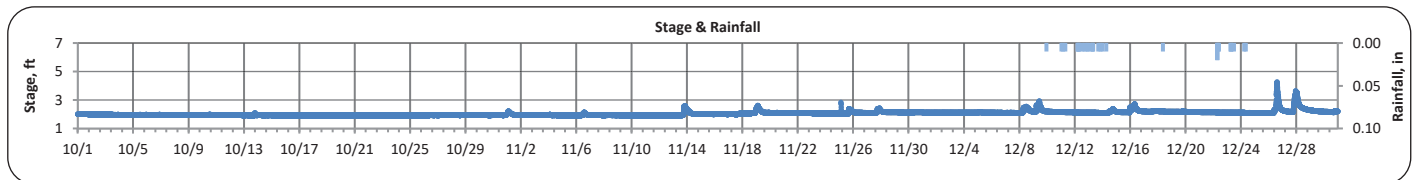




The City of Chattanooga and Hamilton County Joint Water Quality Monitoring
Quarterly Report (October 1, 2024 - December 31, 2024)
Stringers Branch at Signal Mountain



PARAMETER	DESCRIPTION	CONTINUOUS WATER QUALITY PARAMETERS:	SUMMARY STATISTICS				
			MINIMUM OBSERVED	MAXIMUM OBSERVED	MEDIAN OBSERVED	MEAN OBSERVED	STANDARD DEVIATION
STREAM NAME:	Stringers Branch	STAGE (FT):	1.9	4.3	2.0	2.1	0.2
LOCATION:	Signal Mountain Rd	TEMPERATURE (°C):	10	19	15	15	2
TMDL/IMPAIRMENT:	<i>E. coli</i> , Siltation, Habitat Alteration	TURBIDITY (FNU):	2	236	4	5	7
		pH:	8.0	8.5	8.2	8.2	0.1
APPROX. DRAINAGE AREA:	5.7 square miles	SPECIFIC CONDUCTIVITY (µS/cm):	86	343	322	313	28
TOTAL NO. STORMS OVER 0.1 INCH:	20						
MAX. DAILY RAINFALL:	0.03 inches	DISSOLVED OXYGEN (mg/L):	8.5	11.6	9.9	9.9	0.5
TOTAL RAINFALL (FOR PERIOD):	0.1 inches						



Note: Data gaps appear when the sonde is removed for calibration or when the flow depth is below the sensors

REPORT GENERATED ON 3/10/2025



The City of Chattanooga and Hamilton County Joint Water Quality Monitoring
Quarterly Report (October 1, 2024 - December 31, 2024)
Stringers Branch at Signal Mountain



Explanation of Statistics:

MINIMUM OBSERVED	The minimum of the values recorded by the datasonde in 15 minute intervals.
MAXIMUM OBSERVED	The maximum of the values recorded by the datasonde in 15 minute intervals.
MEDIAN OBSERVED	The median of all the values recorded by the datasonde in 15 minute intervals.
MEAN OBSERVED	The average of all the values recorded by the datasonde in 15 minute intervals.
STANDARD DEVIATION	The standard deviation of all the values recorded by the datasonde in 15 minute intervals.

Sampled Data:

No grab samples were collected for the Stringers Branch at Signal Mountain location this monitoring period.

Analyte (units)	Sample 1		Sample 2		Sample 3		Sample 4	
	Time	Results	Time	Results	Time	Results	Time	Results
<i>Escherichia coli</i> (MPN/100mL)								
Total Suspended Solids (mg/L)								
Total Phosphorus (mg/L)								
Total Nitrogen (mg/L)								

Notes:

Parameters reporting in EST (-5:00).

Data Gaps

No data gaps present during this monitoring period.

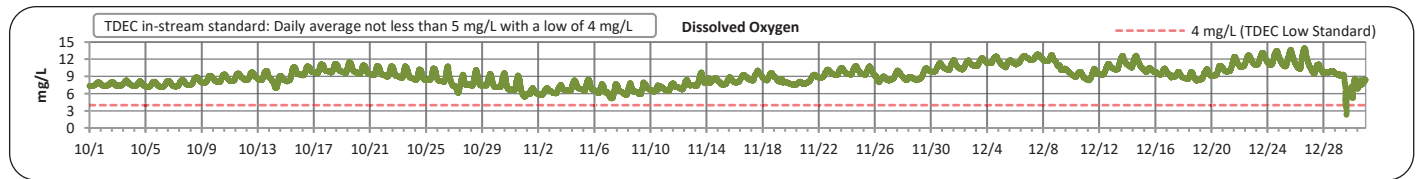
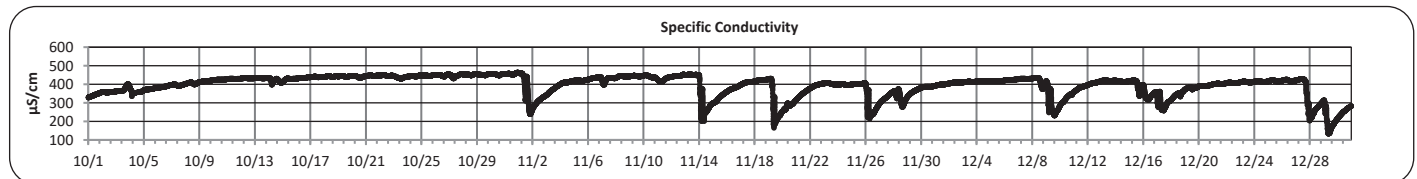
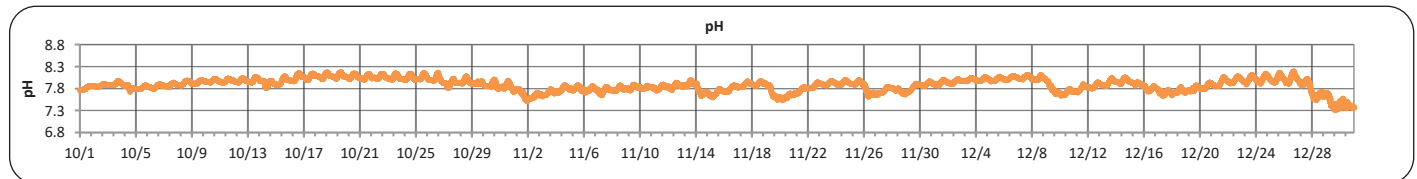
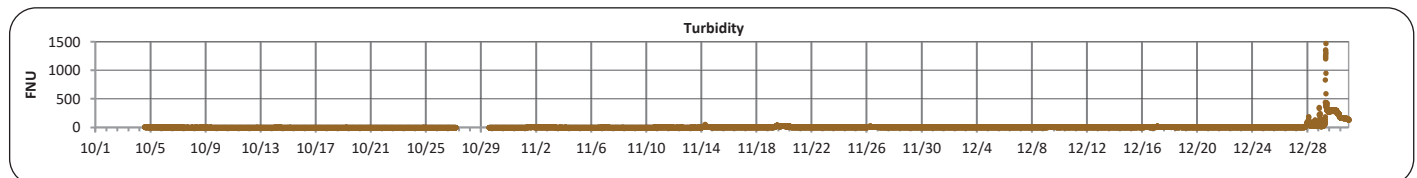
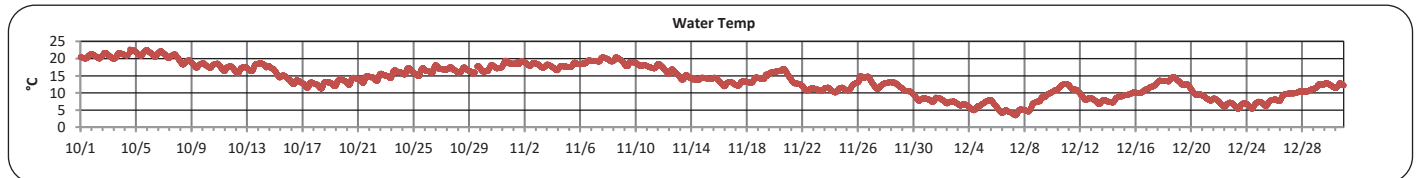
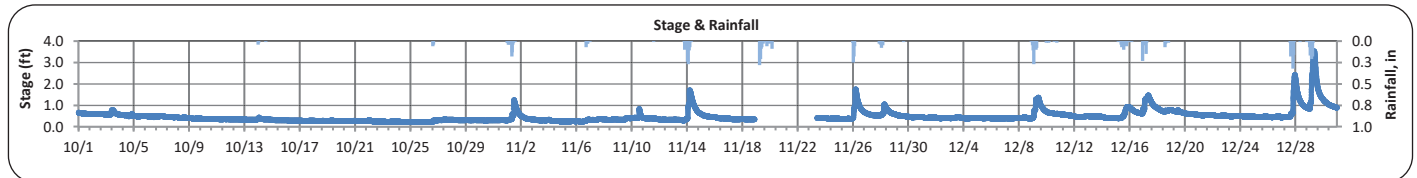


The City of Chattanooga and Hamilton County Joint Water Quality Monitoring Quarterly Report (October 1, 2024 - December 31, 2024)

Friar Branch at Polymer Drive



PARAMETER	DESCRIPTION	CONTINUOUS WATER QUALITY PARAMETERS:	SUMMARY STATISTICS				
			MINIMUM OBSERVED	MAXIMUM OBSERVED	MEDIAN OBSERVED	MEAN OBSERVED	STANDARD DEVIATION
STREAM NAME:	Friar Branch	STAGE (FT):	0.2	3.5	0.4	0.5	0.3
LOCATION:	Polymer Drive Bridge	TEMPERATURE (°C):	4	23	14	14	5
TMDL/IMPAIRMENT:	<i>E. coli</i> , Siltation, Habitat Alteration	TURBIDITY (FNU):	1	1473	3	10	44
		pH:	7.3	8.2	7.9	7.9	0.1
APPROX. DRAINAGE AREA:	20.7 square miles	SPECIFIC CONDUCTIVITY (µS/cm):	134	464	414	394	58
TOTAL NO. STORMS OVER 0.1 INCH:	22						
MAX. DAILY RAINFALL:	0.7 inches	DISSOLVED OXYGEN (mg/L):	2.3	14.0	9.0	9.1	1.7
TOTAL RAINFALL (FOR PERIOD):	1.8 inches						



Note: Data gaps appear when the sonde is removed for calibration or when the flow depth is below the sensors

REPORT GENERATED ON 3/10/2025



The City of Chattanooga and Hamilton County Joint Water Quality Monitoring
Quarterly Report (October 1, 2024 - December 31, 2024)
Friar Branch at Polymer Drive



Explanation of Statistics:

MINIMUM OBSERVED	The minimum of the values recorded by the datasonde in 15 minute intervals.
MAXIMUM OBSERVED	The maximum of the values recorded by the datasonde in 15 minute intervals.
MEDIAN OBSERVED	The median of all the values recorded by the datasonde in 15 minute intervals.
MEAN OBSERVED	The average of all the values recorded by the datasonde in 15 minute intervals.
STANDARD DEVIATION	The standard deviation of all the values recorded by the datasonde in 15 minute intervals.

Sampled Data:

One dry grab sample was collected at the Friar Branch at Ploymer Drive location during this monitoring period.

Analyte (units)	Sample 1		Sample 2		Sample 3		Sample 4	
	11/5/2024							
	Time	Results	Time	Results	Time	Results	Time	Results
<i>Escherichia coli</i> (MPN/100mL)	11:15	130						
Total Suspended Solids (mg/L)	11:15	1.8						
Total Phosphorus (mg/L)	11:15	N/A						
Total Nitrogen (mg/L)	11:15	N/A						

Notes:

Parameters reporting in EST (-5:00).

Data Gaps

Data gap presnt in stage readings from 11/18-11/23 due to sensor malfunction. Data gaps present in turbidity data on 10/1-10/4 and 10/27-10/29 due to sensor malfunction.

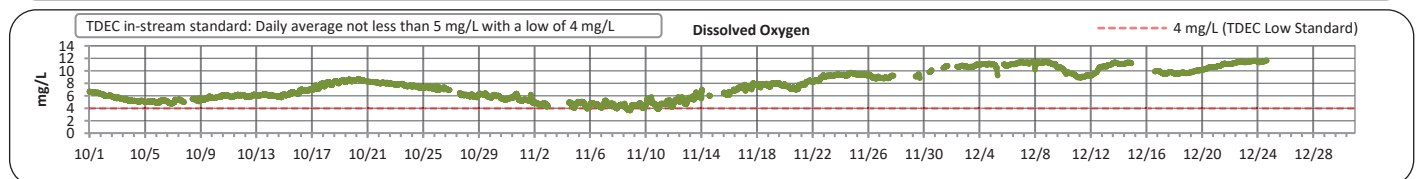
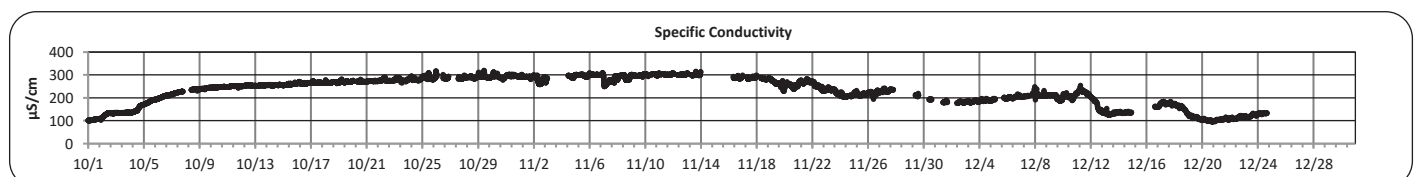
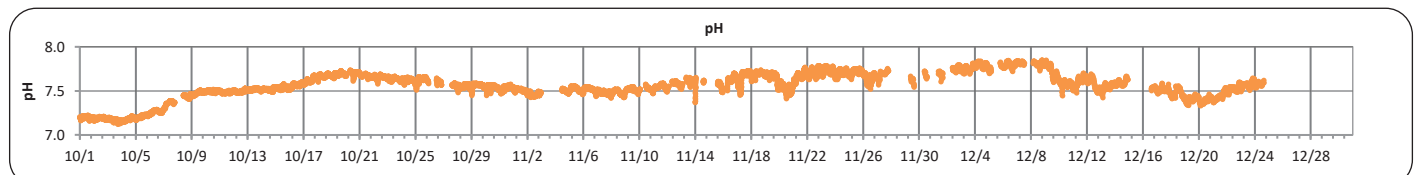
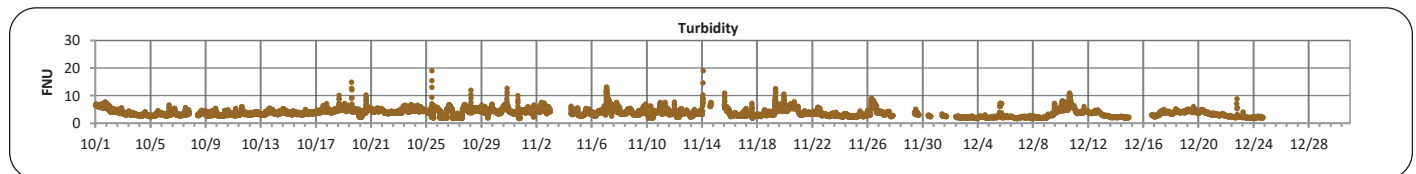
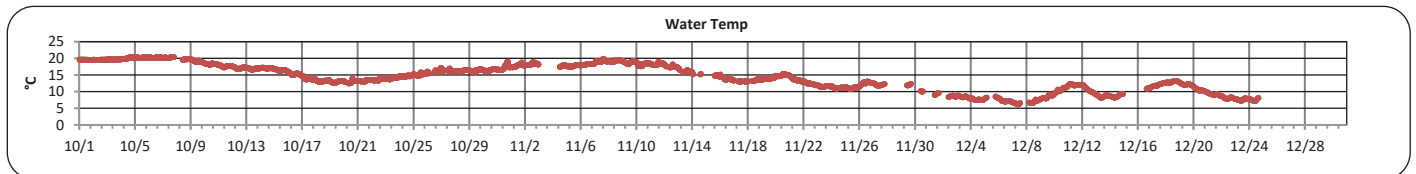
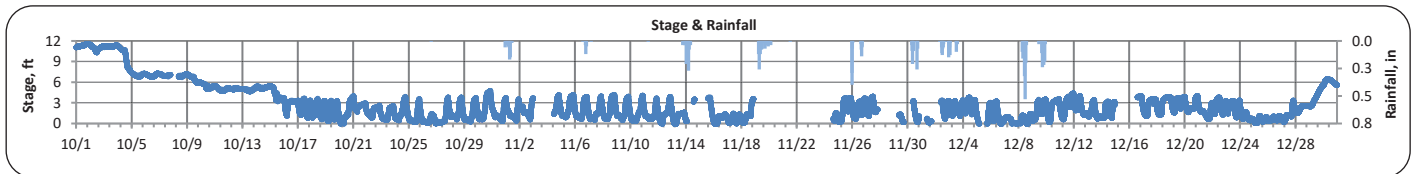


The City of Chattanooga and Hamilton County Joint Water Quality Monitoring Quarterly Report (October 1, 2024 - December 31, 2024)

N. Chick Creek at Greenway Farms



PARAMETER	DESCRIPTION	CONTINUOUS WATER QUALITY PARAMETERS:	SUMMARY STATISTICS				
			MINIMUM OBSERVED	MAXIMUM OBSERVED	MEDIAN OBSERVED	MEAN OBSERVED	STANDARD DEVIATION
STREAM NAME:	N. Chick	STAGE (FT):	0.0	11.6	2.2	2.9	2.5
LOCATION:	Greenway Farms Boat Launch	TEMPERATURE (°C):	6	20	16	15	3
TMDL/IMPAIRMENT:	pH, Siltation, Habitat Alteration	TURBIDITY (FNU):	2	19	4	4	1
		pH:	7.1	7.9	7.6	7.5	0.2
APPROX. DRAINAGE AREA:	117.4 square miles	SPECIFIC CONDUCTIVITY (µS/cm):	94	320	263	245	55
TOTAL NO. STORMS OVER 0.1 INCH:	19						
MAX. DAILY RAINFALL:	1.2 inches	DISSOLVED OXYGEN (mg/L):	3.7	11.7	6.4	7.0	1.9
TOTAL RAINFALL (FOR PERIOD):	5.5 inches						



Note: Data gaps appear when the sonde is removed for calibration or when the flow depth is below the sensors

REPORT GENERATED ON 3/10/2025



The City of Chattanooga and Hamilton County Joint Water Quality Monitoring
Quarterly Report (October 1, 2024 - December 31, 2024)
N. Chick Creek at Greenway Farms



Explanation of Statistics:

MINIMUM OBSERVED	The minimum of the values recorded by the datasonde in 15 minute intervals.
MAXIMUM OBSERVED	The maximum of the values recorded by the datasonde in 15 minute intervals.
MEDIAN OBSERVED	The median of all the values recorded by the datasonde in 15 minute intervals.
MEAN OBSERVED	The average of all the values recorded by the datasonde in 15 minute intervals.
STANDARD DEVIATION	The standard deviation of all the values recorded by the datasonde in 15 minute intervals.

Sampled Data:

One dry grab sample was collected at the N. Chick Creek at Greenway Farms location during this monitoring period.

Analyte (units)	Sample 1		Sample 2		Sample 3		Sample 4	
	11/5/2024							
	Time	Results	Time	Results	Time	Results	Time	Results
<i>Escherichia coli</i> (MPN/100mL)	10:50	62						
Total Suspended Solids (mg/L)	10:50	10.0						
Total Phosphorus (mg/L)	10:50	N/A						
Total Nitrogen (mg/L)	10:50	N/A						

Notes:

Parameters reporting in EST (-5:00).

Data Gaps

Data gaps present for all water quality parameters throughout the entire monitoring period due to partial unsubsmergence and sensor malfunction.

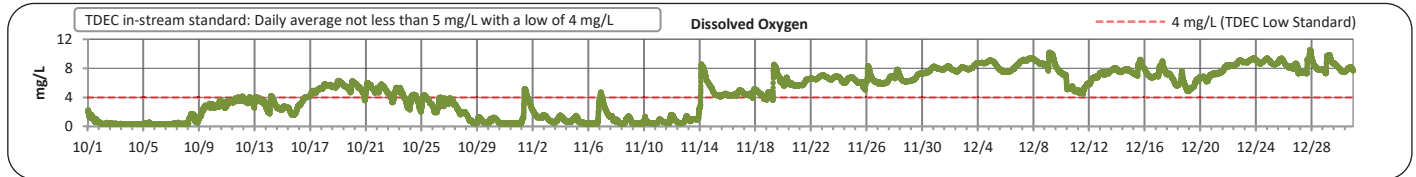
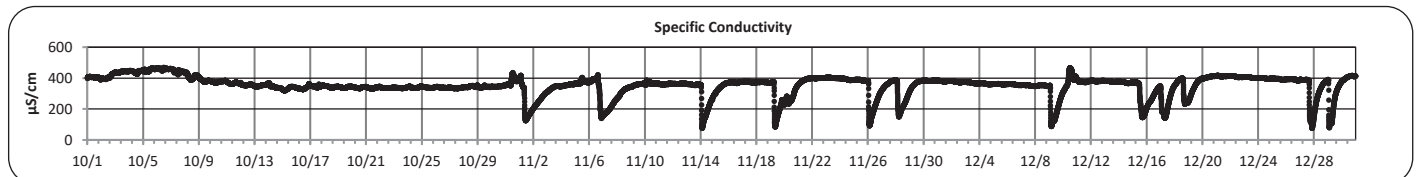
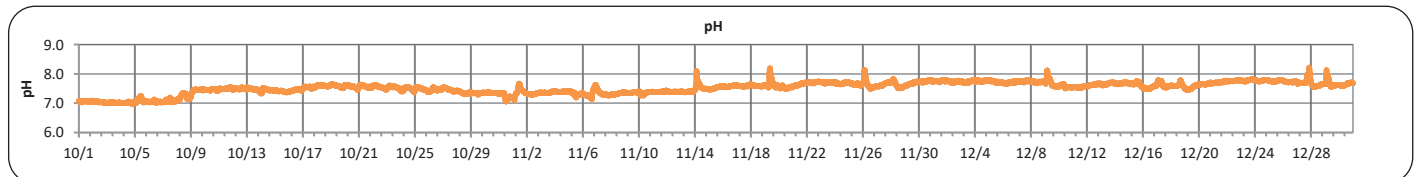
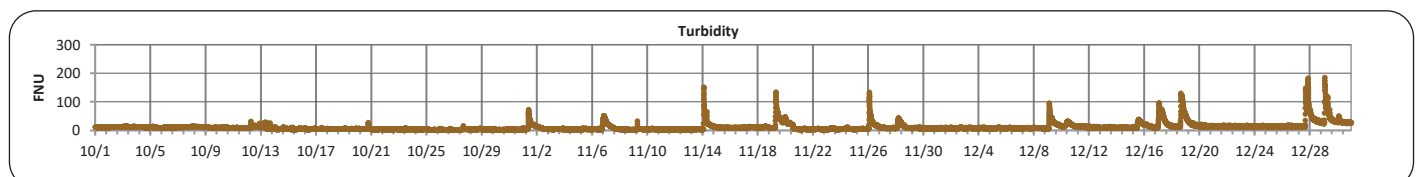
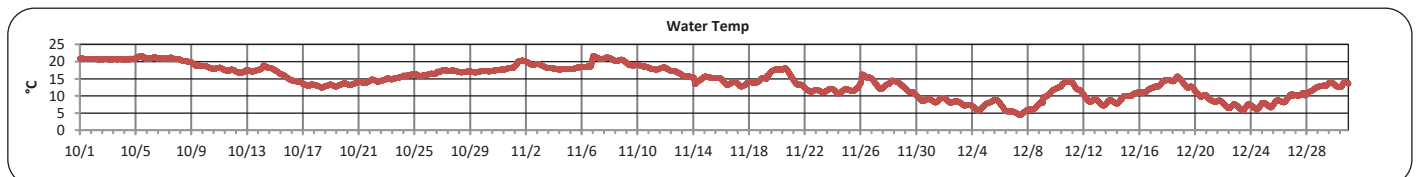
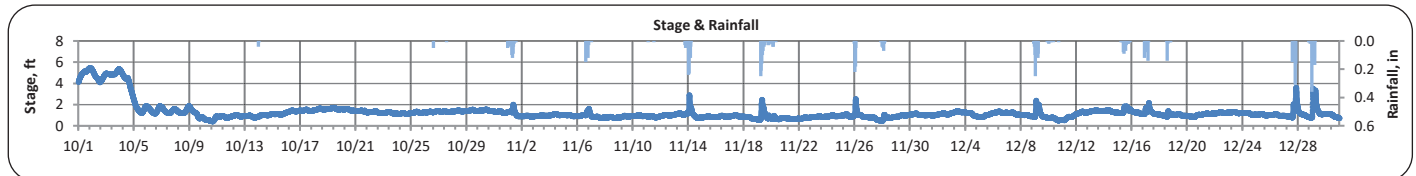


The City of Chattanooga and Hamilton County Joint Water Quality Monitoring Quarterly Report (October 1, 2024 - December 31, 2024)

Dobbs Branch at Park City Park



PARAMETER	DESCRIPTION	CONTINUOUS WATER QUALITY PARAMETERS:	SUMMARY STATISTICS				
			MINIMUM OBSERVED	MAXIMUM OBSERVED	MEDIAN OBSERVED	MEAN OBSERVED	STANDARD DEVIATION
STREAM NAME:	Dobbs Branch	STAGE (FT):	0.4	5.5	1.1	1.3	0.8
LOCATION:	Park City Park	TEMPERATURE (°C):	12	22	14	14	4
TMDL/IMPAIRMENT:	<i>E. coli</i> , Siltation, Habitat Alteration	TURBIDITY (FNU):	2	185	9	12	14
		pH:	7.0	8.2	7.6	7.5	0.2
APPROX. DRAINAGE AREA:	6.2 square miles	SPECIFIC CONDUCTIVITY (µS/cm):	76	470	364	354	65
TOTAL NO. STORMS OVER 0.1 INCH:	18						
MAX. DAILY RAINFALL:	0.7 inches	DISSOLVED OXYGEN (mg/L):	0.4	10.6	5.2	4.8	3.0
TOTAL RAINFALL (FOR PERIOD):	1.7 inches						



Note: Data gaps appear when the sonde is removed for calibration or when the flow depth is below the sensors

REPORT GENERATED ON 3/10/2025



**The City of Chattanooga and Hamilton County Joint Water Quality Monitoring
Quarterly Report (October 1, 2024 - December 31, 2024)
Dobbs Branch at Park City Park**



Explanation of Statistics:

MINIMUM OBSERVED	The minimum of the values recorded by the datasonde in 15 minute intervals.
MAXIMUM OBSERVED	The maximum of the values recorded by the datasonde in 15 minute intervals.
MEDIAN OBSERVED	The median of all the values recorded by the datasonde in 15 minute intervals.
MEAN OBSERVED	The average of all the values recorded by the datasonde in 15 minute intervals.
STANDARD DEVIATION	The standard deviation of all the values recorded by the datasonde in 15 minute intervals.

Sampled Data:

One dry grab sample was collected at the Dobbs Branch at Park City Park location during this monitoring period.

Analyte (units)	Sample 1		Sample 2		Sample 3		Sample 4	
	11/5/2024							
	Time	Results	Time	Results	Time	Results	Time	Results
<i>Escherichia coli</i> (MPN/100mL)	10:40	260						
Total Suspended Solids (mg/L)	10:40	2.6						
Total Phosphorus (mg/L)	10:40	N/A						
Total Nitrogen (mg/L)	10:40	N/A						

Notes:

Parameters reporting in EST (-5:00).

Data Gaps

No data gaps present during this monitoring period.

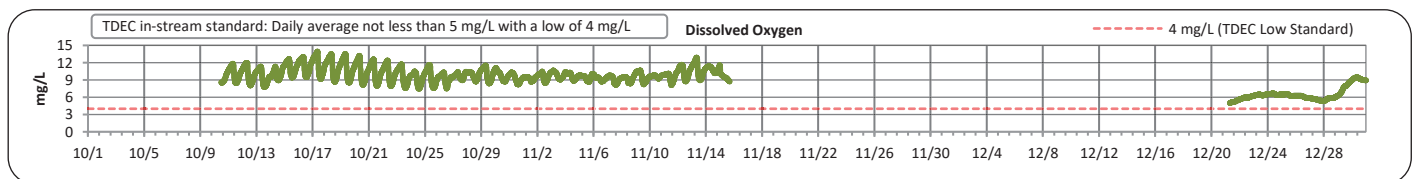
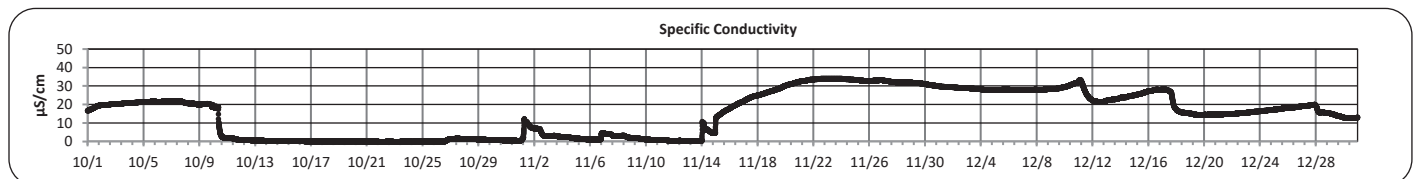
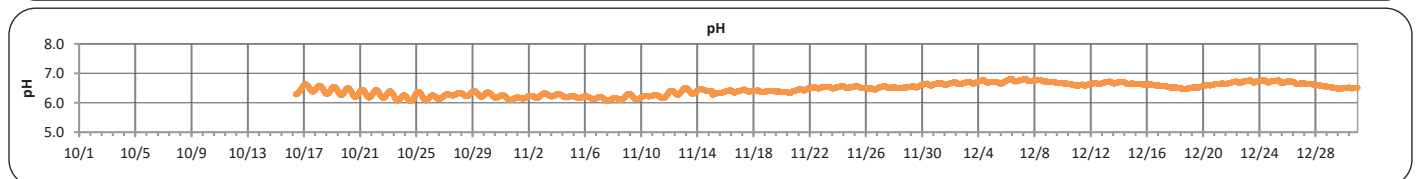
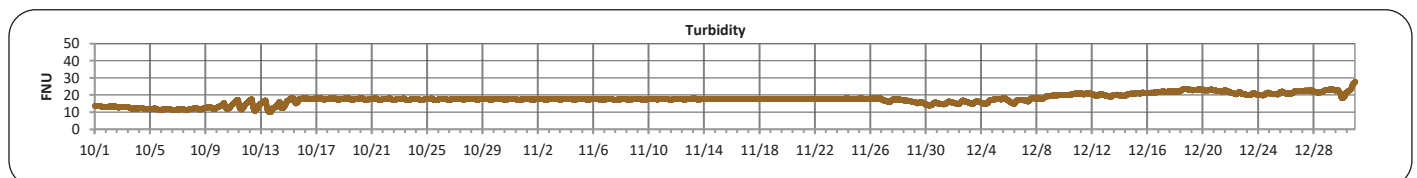
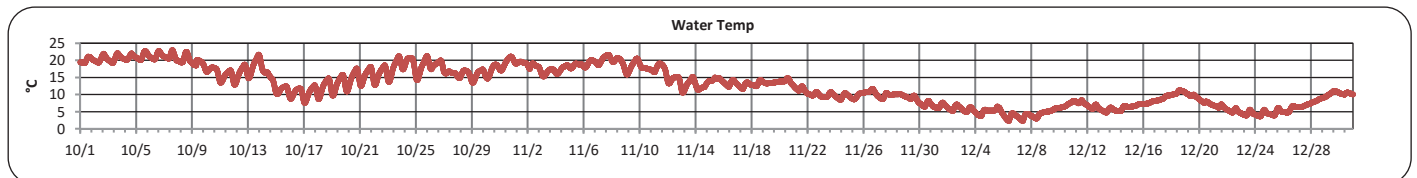
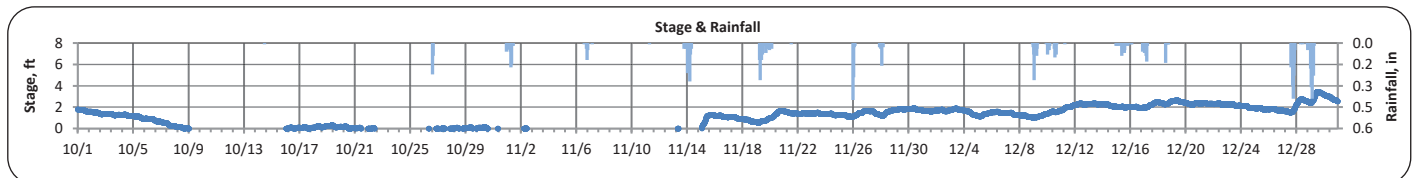


The City of Chattanooga and Hamilton County Joint Water Quality Monitoring Quarterly Report (October 1, 2024 - December 31, 2024)

North Chick at Ivy Academy



PARAMETER	DESCRIPTION	CONTINUOUS WATER QUALITY PARAMETERS:	SUMMARY STATISTICS				
			MINIMUM OBSERVED	MAXIMUM OBSERVED	MEDIAN OBSERVED	MEAN OBSERVED	STANDARD DEVIATION
STREAM NAME:	North Chick Creek	STAGE (FT):	0.00	3.46	1.49	1.44	0.78
LOCATION:	Ivy Academy	TEMPERATURE (°C):	2	23	12	13	5
TMDL/IMPAIRMENT:	Siltation, Habitat Alteration	TURBIDITY (FNU):	10	33	18	18	3
		pH:	6.1	6.8	6.5	6.5	0.2
APPROX. DRAINAGE AREA:	17 square miles	SPECIFIC CONDUCTIVITY (µS/cm):	0	34	17	15	12
TOTAL NO. STORMS OVER 0.1 INCH:	17						
MAX. DAILY RAINFALL:	1.1 inches	DISSOLVED OXYGEN (mg/L):	5.0	13.9	9.4	9.2	1.8
TOTAL RAINFALL (FOR PERIOD):	2.8 inches						



Note: Data gaps appear when the sonde is removed for calibration or when the flow depth is below the sensors

REPORT GENERATED ON 3/10/2025



The City of Chattanooga and Hamilton County Joint Water Quality Monitoring
Quarterly Report (October 1, 2024 - December 31, 2024)
North Chick at Ivy Academy



Explanation of Statistics:

MINIMUM OBSERVED	The minimum of the values recorded by the datasonde in 15 minute intervals.
MAXIMUM OBSERVED	The maximum of the values recorded by the datasonde in 15 minute intervals.
MEDIAN OBSERVED	The median of all the values recorded by the datasonde in 15 minute intervals.
MEAN OBSERVED	The average of all the values recorded by the datasonde in 15 minute intervals.
STANDARD DEVIATION	The standard deviation of all the values recorded by the datasonde in 15 minute intervals.

Sampled Data:

No grab samples were collected at the North Chick at Ivy Academy location during this monitoring period.

Analyte (units)	Sample 1		Sample 2		Sample 3		Sample 4	
	Time	Results	Time	Results	Time	Results	Time	Results
<i>Escherichia coli</i> (MPN/100mL)								
Total Suspended Solids (mg/L)								
Total Phosphorus (mg/L)								
Total Nitrogen (mg/L)								

Notes:

All paramaters reporting in EST (-5:00).

Data Gaps

Multiple data gaps present in stage, pH and dissolved oxygen data due to partial unsubmergence and sensor malfunctions.

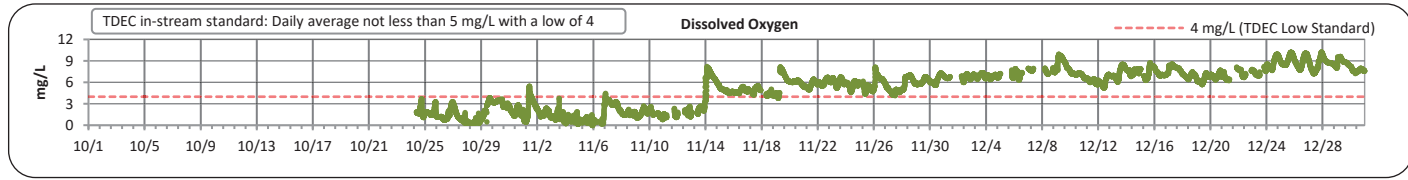
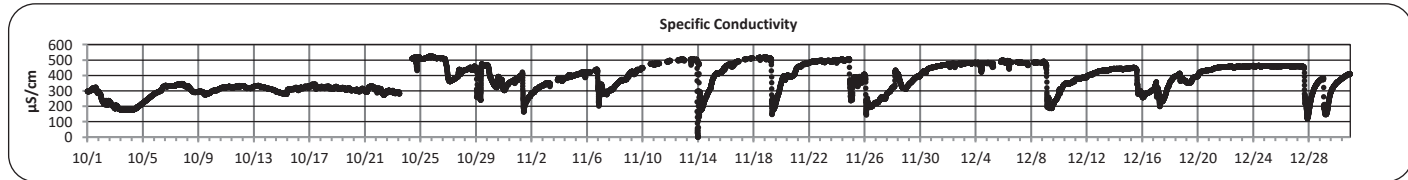
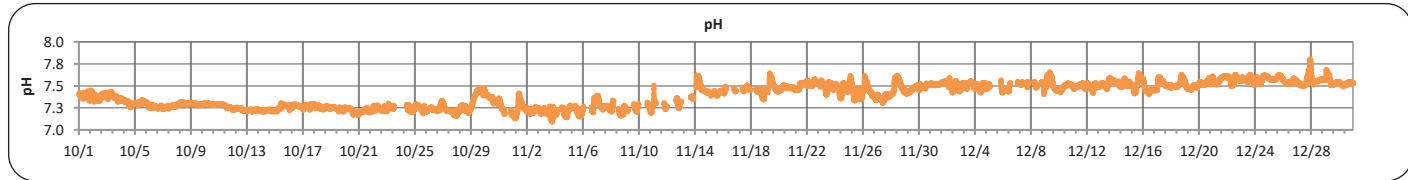
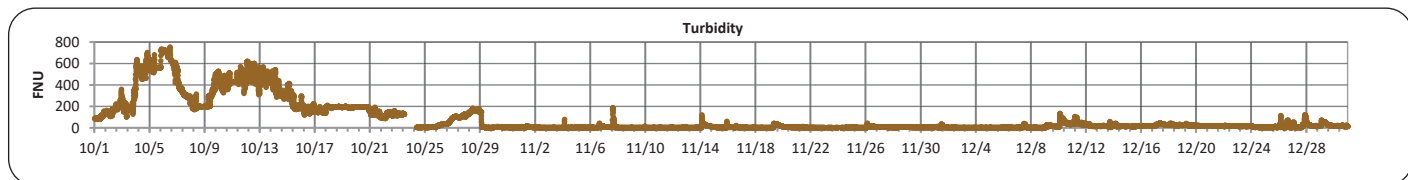
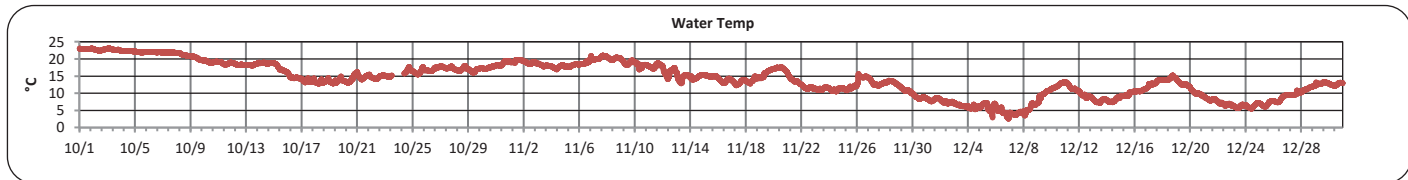
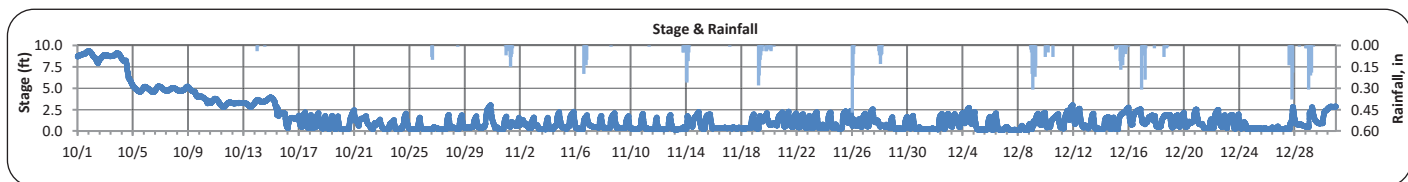


The City of Chattanooga and Hamilton County Joint Water Quality Monitoring Quarterly Report (October 1, 2024 - December 31, 2024)

Citico Creek



PARAMETER	DESCRIPTION	CONTINUOUS WATER QUALITY PARAMETERS:	SUMMARY STATISTICS				
			MINIMUM OBSERVED	MAXIMUM OBSERVED	MEDIAN OBSERVED	MEAN OBSERVED	STANDARD DEVIATION
STREAM NAME:	Citico Creek	STAGE (FT):	0.13	9.36	0.91	1.62	1.91
LOCATION:	Waterwalk PI Rd	TEMPERATURE (°C):	3	23	14	14	5
TMDL/IMPAIRMENT:	pH, E. coli, Siltation, Habitat Alteration	TURBIDITY (FNU):	1	755	15	87	152
		pH:	7.1	7.8	7.4	7.4	0.1
APPROX. DRAINAGE AREA:	6 square miles	SPECIFIC CONDUCTIVITY (µS/cm):	1.6	527	377	375	89
TOTAL NO. STORMS OVER 0.1 INCH:	18						
MAX. DAILY RAINFALL:	0.4 inches	DISSOLVED OXYGEN (mg/L):	0.0	10.2	6.1	5.3	2.6
TOTAL RAINFALL (FOR PERIOD):	0.9 inches						



Note: Data gaps appear when the sonde is removed for calibration or when the flow depth is below the sensors



The City of Chattanooga and Hamilton County Joint Water Quality Monitoring
Quarterly Report (October 1, 2024 - December 31, 2024)
Citico Creek



Explanation of Statistics:

MINIMUM OBSERVED	The minimum of the values recorded by the datasonde in 15 minute intervals.
MAXIMUM OBSERVED	The maximum of the values recorded by the datasonde in 15 minute intervals.
MEDIAN OBSERVED	The median of all the values recorded by the datasonde in 15 minute intervals.
MEAN OBSERVED	The average of all the values recorded by the datasonde in 15 minute intervals.
STANDARD DEVIATION	The standard deviation of all the values recorded by the datasonde in 15 minute intervals.

Sampled Data:

One grab sample was obtained during dry conditions at the Citico Creek location during this monitoring period.

Analyte (units)	Sample 1		Sample 2		Sample 3		Sample 4	
	11/5/2024							
	Time	Results	Time	Results	Time	Results	Time	Results
<i>Escherichia coli</i> (MPN/100mL)	9:45	220						
Total Suspended Solids (mg/L)	9:45	2.67						
Total Phosphorus (mg/L)	N/A	N/A						
Total Nitrogen (mg/L)	N/A	N/A						

*Value represents Nitrate/Nitrite concentrations only. TKN was below the detection limit of 0.5 mg/L.

Notes:

All paramaters reporting in EST (-5:00).

Data Gaps

Multiple data gaps are present throughout monitoring period for all water quality parameters, excluding rainfall and stage, due to downstream influences from the Tennessee River and partial unsubmergence.

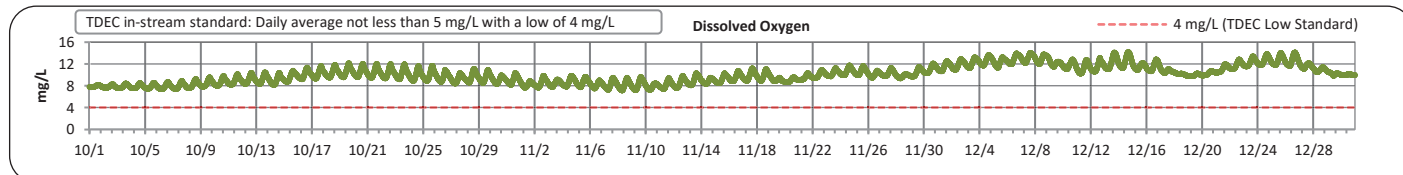
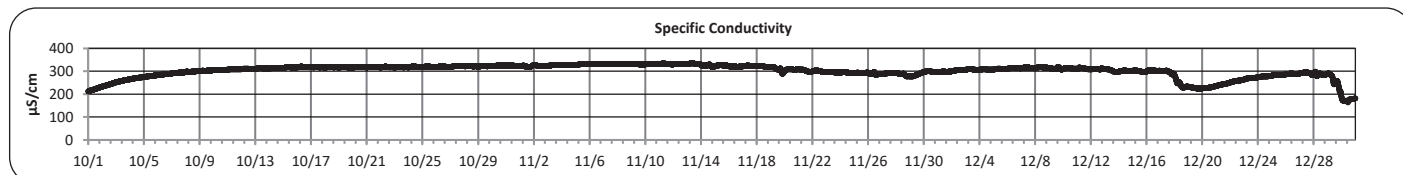
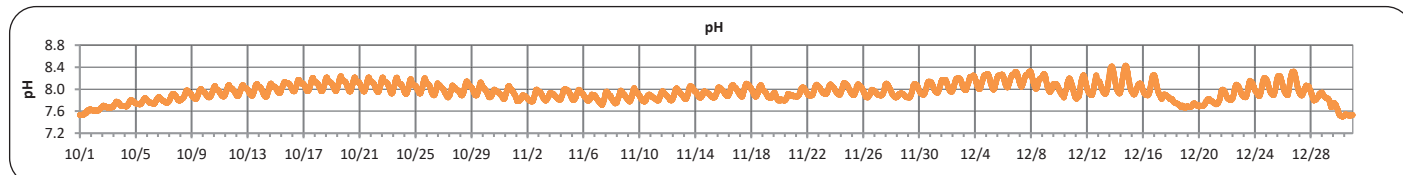
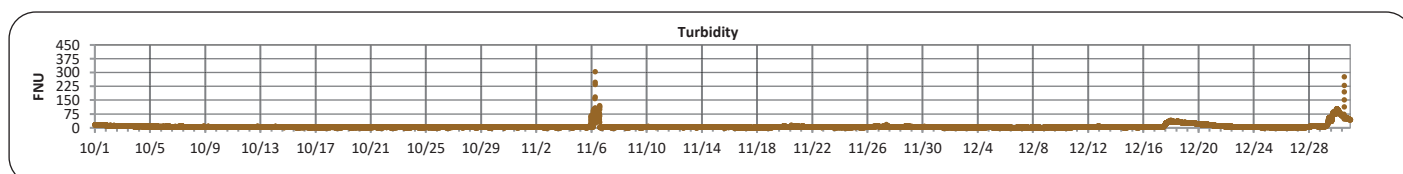
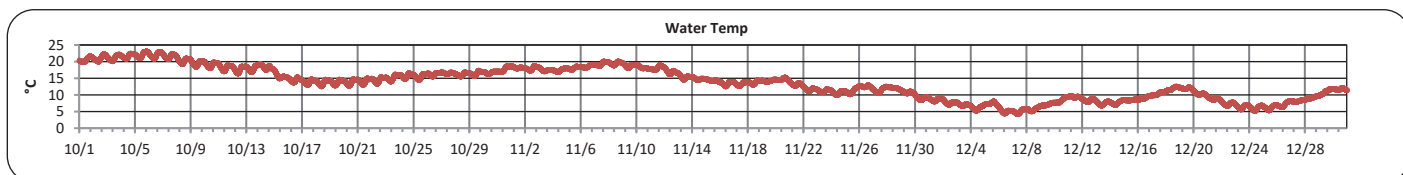
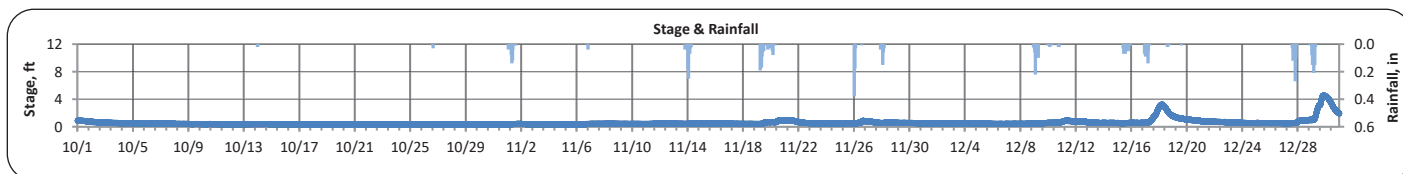


The City of Chattanooga and Hamilton County Joint Water Quality Monitoring Quarterly Report (October 1, 2024 - December 31, 2024)

S. Chick Creek at West Chick Creek



PARAMETER	DESCRIPTION	CONTINUOUS WATER QUALITY PARAMETERS:	SUMMARY STATISTICS				
			MINIMUM OBSERVED	MAXIMUM OBSERVED	MEDIAN OBSERVED	MEAN OBSERVED	STANDARD DEVIATION
STREAM NAME:	S. Chick Creek	STAGE (FT):	0.28	4.61	0.47	0.61	0.50
LOCATION:	S. Chick at West Chick Creek	TEMPERATURE (°C):	4	23	14	14	5
TMDL/IMPAIRMENT:	E.coli, Siltation, Habitat Alteration	TURBIDITY (FNU):	2	305	5	8	12
		pH:	7.5	8.4	8.0	8.0	0.2
APPROX. DRAINAGE AREA:	23 square miles	SPECIFIC CONDUCTIVITY (µS/cm):	164	335	310	301	31
TOTAL NO. STORMS OVER 0.1 INCH:	0						
MAX. DAILY RAINFALL:	0.6 inches	DISSOLVED OXYGEN (mg/L):	7.2	14.2	10.0	10.1	1.6
TOTAL RAINFALL (FOR PERIOD):	1.2 inches						



Note: Data gaps appear when the sonde is removed for calibration or when the flow depth is below the sensors

REPORT GENERATED ON 3/10/2025





**The City of Chattanooga and Hamilton County Joint Water Quality Monitoring
Quarterly Report (October 1, 2024 - December 31, 2024)
S. Chick Creek at West Chick**



Explanation of Statistics:

MINIMUM OBSERVED	The minimum of the values recorded by the datasonde in 15 minute intervals.
MAXIMUM OBSERVED	The maximum of the values recorded by the datasonde in 15 minute intervals.
MEDIAN OBSERVED	The median of all the values recorded by the datasonde in 15 minute intervals.
MEAN OBSERVED	The average of all the values recorded by the datasonde in 15 minute intervals.
STANDARD DEVIATION	The standard deviation of all the values recorded by the datasonde in 15 minute intervals.

Sampled Data:

One grab sample was obtained during dry conditions at the S. Chick Creek at West Chick location during this monitoring period.

Analyte (units)	Sample 1		Sample 2		Sample 3		Sample 4	
	11/5/2024							
	Time	Results	Time	Results	Time	Results	Time	Results
<i>Escherichia coli</i> (MPN/100mL)	10:30	20						
Total Suspended Solids (mg/L)	10:30	5.0						
Total Phosphorus (mg/L)	N/A	N/A						
Total Nitrogen (mg/L)	N/A	N/A						

*Value represents Nitrate/Nitrite concentrations only. TKN was below the detection limit of 0.5 mg/L.

Notes:

All paramaters reporting in EST (-5:00).

Data Gaps

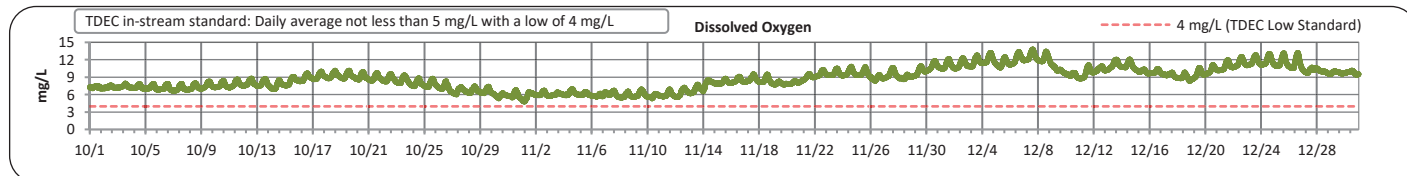
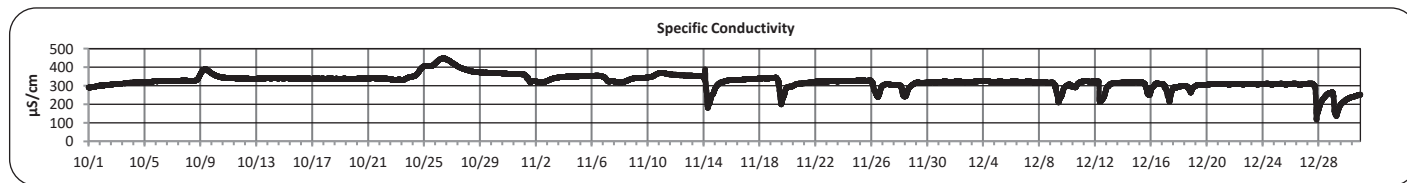
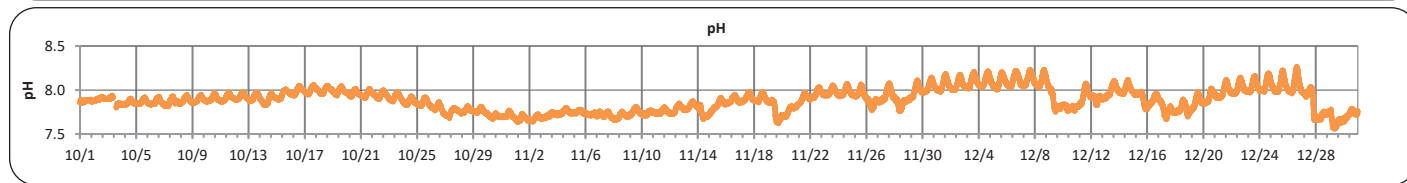
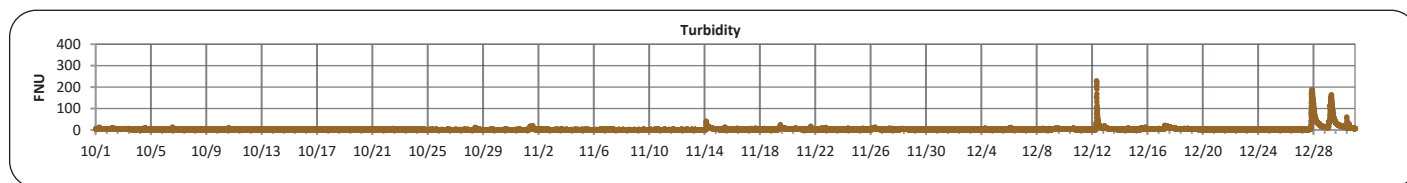
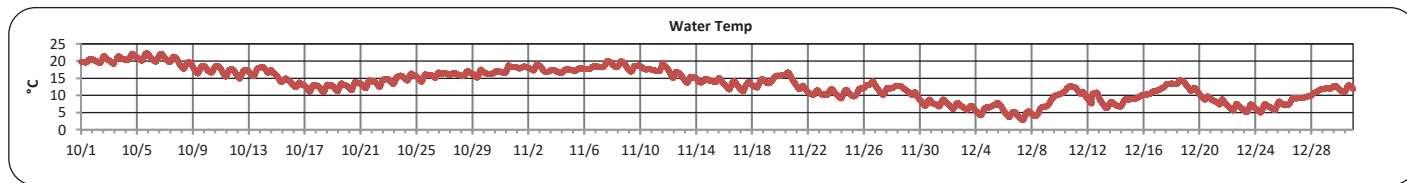
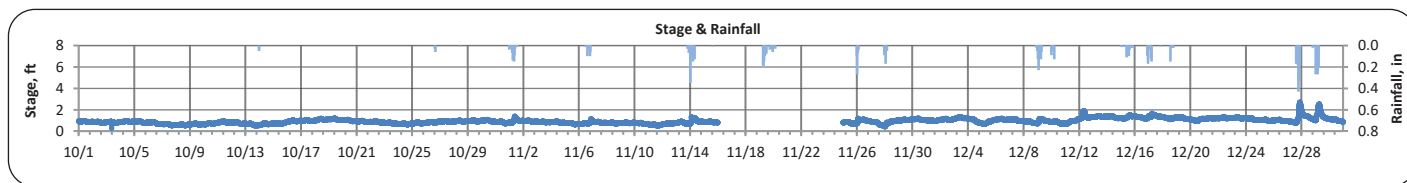
No data gaps are present during this monitoring period.



The City of Chattanooga and Hamilton County Joint Water Quality Monitoring
Quarterly Report (October 1, 2024 - December 31, 2024)
Mountain Creek at Elementary School



PARAMETER	DESCRIPTION	CONTINUOUS WATER QUALITY PARAMETERS:	SUMMARY STATISTICS				
			MINIMUM OBSERVED	MAXIMUM OBSERVED	MEDIAN OBSERVED	MEAN OBSERVED	STANDARD DEVIATION
STREAM NAME:	Mountain Creek	STAGE (FT):	0.28	2.71	0.92	0.96	0.24
LOCATION:	Red Bank Elementary School	TEMPERATURE (°C):	3	22	13	13	4
TMDL/IMPAIRMENT:	<i>E. coli</i> , Siltation, Habitat Alteration	TURBIDITY (FNU):	1	322	2	4	11
		pH:	7.6	8.3	7.9	7.9	0.1
APPROX. DRAINAGE AREA:	5.5 square miles	SPECIFIC CONDUCTIVITY (µS/cm):	119	449	325	324	38
TOTAL NO. STORMS OVER 0.1 INCH:	21						
MAX. DAILY RAINFALL:	1.2 inches	DISSOLVED OXYGEN (mg/L):	4.8	13.8	8.8	8.8	1.9
TOTAL RAINFALL (FOR PERIOD):	2.7 inches						



Note: Data gaps appear when the sonde is removed for calibration or when the flow depth is below the sensors

REPORT GENERATED ON 3/10/2025



The City of Chattanooga and Hamilton County Joint Water Quality Monitoring
Quarterly Report (October 1, 2024 - December 31, 2024)
Mountain Creek at Elementary School



Explanation of Statistics:

MINIMUM OBSERVED	The minimum of the values recorded by the datasonde in 15 minute intervals.
MAXIMUM OBSERVED	The maximum of the values recorded by the datasonde in 15 minute intervals.
MEDIAN OBSERVED	The median of all the values recorded by the datasonde in 15 minute intervals.
MEAN OBSERVED	The average of all the values recorded by the datasonde in 15 minute intervals.
STANDARD DEVIATION	The standard deviation of all the values recorded by the datasonde in 15 minute intervals.

Sampled Data:

One grab sample was obtained during dry conditions at the Mountain Creek at Elementary School location during this monitoring period.

Analyte (units)	Sample 1		Sample 2		Sample 3		Sample 4	
	11/5/2024							
	Time	Results	Time	Results	Time	Results	Time	Results
<i>Escherichia coli</i> (MPN/100mL)	9:50	130						
Total Suspended Solids (mg/L)	9:50	<1.4						
Total Phosphorus (mg/L)	N/A	N/A						
Total Nitrogen (mg/L)	N/a	N/A						

*Value represents Nitrate/Nitrite concentrations only. TKN was below the detection limit of 0.5 mg/L.

Notes:

All paramaters reporting in EST (-5:00).

Data Gaps

Data gap present in stage data from 11/15-11/25 due to partial unsubmergence.