

**First Reading: April 8, 2025**  
**Second Reading: April 15, 2025**

**ORDINANCE NO. 14221**

**AN ORDINANCE TO APPROVE CORRECTIONS TO THE  
OFFICIAL ZONING MAP AS REFERENCED BELOW.**

---

**WHEREAS**, Ordinance No. 14171 approved the adoption of the new Official Zoning Map; and

**WHEREAS**, that ordinance rezoned properties to a new equivalent zone; and

**WHEREAS**, requests have been made for corrections to the original proposed equivalency zone; and

**WHEREAS**, conditions have been added to zoning requests by City Council through the rezoning process and are still effective/active on the equivalent zone, if applicable.

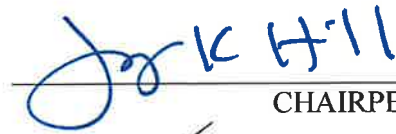
**BE IT ORDAINED BY THE CITY COUNCIL OF THE CITY OF CHATTANOOGA,  
TENNESSEE:**

**SECTION 1.** That the following corrections are made to the Official Zoning Map:

- 1) Rezoning from Open Space Zone to I-H Heavy Industrial Zone: 611 Terminal Road, Tax Map No. 126-010.01; and
- 2) Rezoning from CN-T Neighborhood Transition Commercial Zone to RN-3 Residential Neighborhood Zone: 1204 Premier Drive, Tax Map No. 158G-B-001.

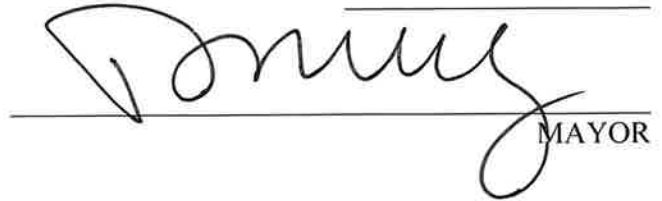
**SECTION 2.** **BE IT FURTHER ORDAINED**, That this Ordinance shall take effect two (2) weeks from and after its passage.

Passed on second and final reading: April 15, 2025



CHAIRPERSON

APPROVED: ☒ DISAPPROVED: ☐



MAYOR

/mem/v3

**MAP ENGINEERS L.L.C.**  
 CELEBRATING 29 YEARS  
 720 AVENUE 197  
 CHATTANOOGA, TN 37421  
 PHONE: 423.241.1111  
 FAX: 423.241.1112

**Tennessee Baptist Childrens Home**  
*Zoning Delineation Plan*  
 FOR:  
 NR PROPERTIES LLC  
 7443 Commons Blvd STE 102  
 Chattanooga, TN 37421

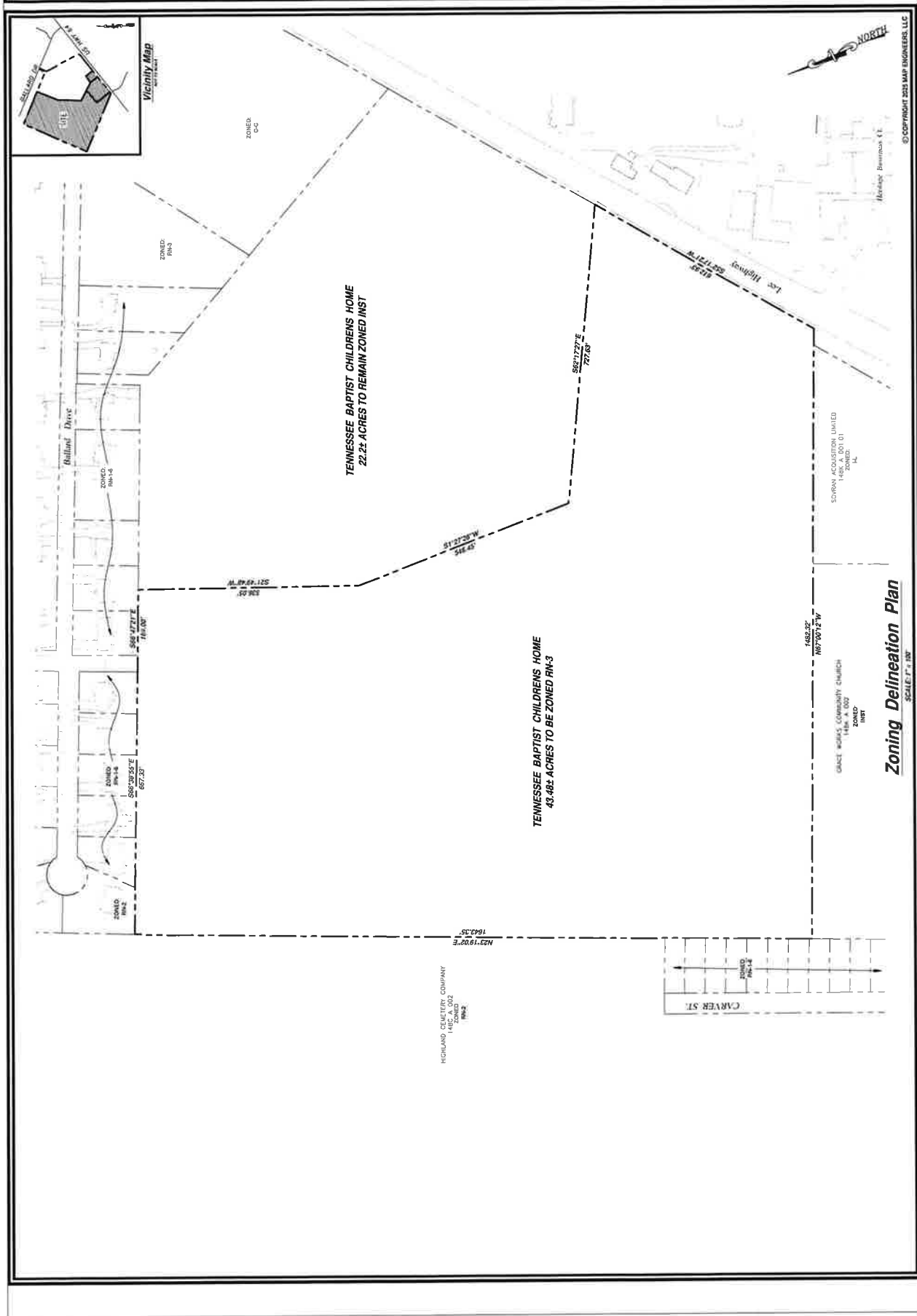
**ZONING DELINEATION PLAN**

**REVISIONS**

NO.	DATE	DESCRIPTION
1		
2		
3		
4		
5		

**ALL PROJECTS RESERVED**  
 THE INFORMATION CONTAINED HEREIN IS THE PROPERTY OF MAP ENGINEERS L.L.C. AND IS NOT TO BE REPRODUCED OR TRANSMITTED IN ANY FORM OR BY ANY MEANS, ELECTRONIC OR MECHANICAL, INCLUDING PHOTOCOPYING, RECORDING, OR BY ANY INFORMATION STORAGE AND RETRIEVAL SYSTEM, WITHOUT THE WRITTEN PERMISSION OF MAP ENGINEERS L.L.C.

DATE: 7/26/23  
 DRAWN BY: SST  
 CHECKED BY: MAP  
 PROJECT NUMBER: 24-181  
 SHEET NUMBER: Z-1



**Zoning Delineation Plan**  
 SCALE: 1" = 100'

© COPYRIGHT 2023 MAP ENGINEERS, LLC