

**First Reading: May 19, 2026**  
**Second Reading: May 26, 2026**

ORDINANCE NO. 14366

AN ORDINANCE AMENDING CHATTANOOGA CITY CODE, PART II, CHAPTER 3, ADVERTISING, ARTICLE V, SCENIC AREAS AND SCENIC CORRIDORS, SECTION 3-55, OFF-PREMISE SIGNS ALONG SCENIC CORRIDORS PROHIBITED.

---

**WHEREAS**, the current code was comprehensively updated and adopted in 2025 with the exception of the Scenic Areas and Scenic Corridors; and

**WHEREAS**, the proposed updates to the Scenic Sign Areas and Corridors constitute an administrative change intended to update the names of designated streets and provide more current and accurate geographical location information to reflect the present layout of the community; and

**WHEREAS**, it is the intent of these regulations to protect and enhance the physical appearance of the community in a lawful manner that recognizes the rights of property owners while preserving the unique aesthetic character of designated scenic areas; and

**WHEREAS**, the proposed regulations foster public safety along public and private streets within the community by assuring that all signs are in safe and appropriate locations.

BE IT ORDAINED BY THE CITY COUNCIL OF THE CITY OF CHATTANOOGA, TENNESSEE:

SECTION 1. That Chattanooga City Code, Part II, Chapter 3, Section 3-55, be amended by deleting same in its entirety and substituting in lieu thereof the following:

**Sec. 3-55. Off Premise Signs Along Scenic Corridors Prohibited.**

- (a) Interstate 24, beginning at the city limits south and west of the Tiftonia area and continuing to the center of its interchange with U.S. Highway 27, excluding the area within one thousand three hundred twenty (1,320') feet on either side of the Interstate 24 and U.S. Highway 41 intersection at the Tiftonia (Cummings Highway) exit.
- (b) Cummings Highway/Lookout Mountain Pike from the City limits west of Lookout Valley to its intersection with Highway 58.

- (c) Highway 27 (“Corridor J”) and any extensions thereof, beginning at the southern bank of the Tennessee River and extending northward to the northernmost city limits of Chattanooga, limited to those portions of the roadway located within the municipal boundaries of the City of Chattanooga.
- (d) The Tennessee River from Chickamauga Dam downstream to the city limits.
- (e) Within the area of Veterans Bridge and its approaches beginning at the midpoint of the intersection of Barton Avenue and Crewdson Street and extending southward four hundred seventy-five (475’) feet on either side of the centerline of Barton Avenue across Veterans Bridge at the Tennessee River to its intersection with Fourth Street.
- (f) Along Interstates 24 and 75 from one hundred fifty (150’) feet east of Dodds Avenue eastward to the city limits as they now exist or may hereafter be expanded, except for an area one thousand three hundred twenty (1,320’) feet in either direction along Interstate 75 from the intersection with Lee Highway (U.S. Highway 11 and 64) at Ooltewah and State Route 2 (Bonny Oaks Drive).
- (g) The Dupont Parkway from its north end, at the center of its intersection with Highway 153, generally south and east across Access Road and across the C.B. Robinson Bridge to the center of its intersection with Amnicola Highway, including all entrance and exit ramps thereto on the north side of Amnicola Highway.
- (h) The Airport Connector Road and Shepherd Road from State Highway 153 generally southward to Airport Road.
- (i) Riverside Drive generally northwardly and eastwardly from its intersection with Broad Street where it becomes W. 20th Street to the point where it crosses Citico Creek, east of Amnicola Highway.
- (j) All of Jenkins Road lying within the Chattanooga City limits.
- (k) East Brainerd Road from its intersection with N. Concord Road and extending South and East to the City limits.
- (l) Highway 153 from its intersection with Amnicola Highway to its intersection with Hamill Road.
- (m) Cassandra Smith Road from its intersection with Hixson Pike to its intersection with Hamill Road.
- (n) Hamill Road from its intersection with Hixson Pike to Big Ridge Road.
- (o) Highway 153 from its intersection with Grubb Road going north to the City limits.
- (p) Hickory Valley Road in its entirety.

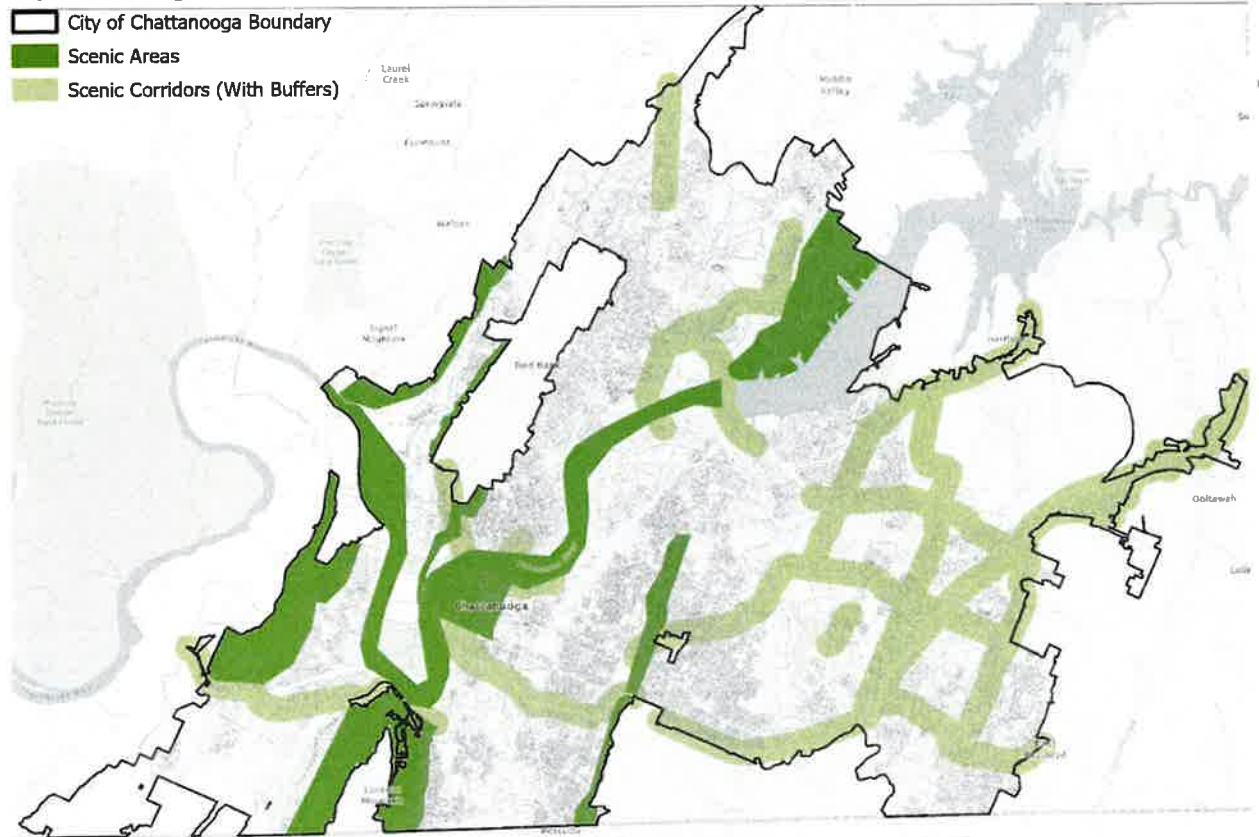
- (q) Jersey Pike in its entirety.
- (r) Shallowford Road in its entirety.
- (s) Bonny Oaks Drive from its intersection with Highway 58 eastwardly to its intersection with Old Lee Highway at Interstate 75.
- (t) Highway 58 from its intersection with Jersey Pike northwardly to the City limits.
- (u) All of Harrison-Ooltewah Road lying within the Chattanooga City limits.
- (v) All of Old Lee Highway lying within the Chattanooga City limits.
- (w) All of Old Cleveland Pike lying within the Chattanooga City limits.
- (x) All of Hunter Road lying within the Chattanooga City limits.
- (y) All of Mountain View Road lying within the Chattanooga City limits.
- (z) All of Snow Hill Road lying within the Chattanooga City limits.
- (aa) All of Ooltewah-Georgetown Road lying within the Chattanooga City limits.
- (bb) Lee Highway from its intersection with Hunter Road southeastwardly to the City limits towards Bradley County.
- (cc) Apison Pike.

### **Scenic Areas and Corridors Sign Code Update 2026**

**Background:** The Sign Code designates thirty (30) locations as scenic corridors consisting of certain strips of land six hundred sixty (660') feet on either side of the outermost edge of the right-of-way of all of the roads, routes and rivers and prohibits off-premise signs (billboards). The corridor locations were originally created in the 1980's and have not been updated comprehensively since the creation of the corridor.

Staff is proposing to amend the regulations to simplify the language so it is easier to understand, update the roads that have changed, and remove duplicative descriptions. Staff is not proposing to remove any locations from the code other than duplicative areas as listed above.

## City-wide Map



## Scenic Areas

- A. **Original:** Interstate 24 from the city limits south and west of the Tiftonia area to the center of its junction with U.S. Highway 27, except for an area one thousand three hundred twenty feet (1,320) on either side of the intersection of Interstate 24 and U.S. Highway 41 at the Tiftonia exit (Cummins Highway).

**Proposed Change:** Interstate 24, beginning at the city limits south and west of the Tiftonia area and continuing to the center of its interchange with U.S. Highway 27, excluding the area within 1,320 feet on either side of the Interstate 24 and U.S. Highway 41 intersection at the Tiftonia (Cummins Highway) exit.

**Reason for Change:** The text was simplified so it is easier to understand.

**Location - Corridor is in Yellow**



B. **Original:** Cummings Highway/Lookout Mountain Pike from the City limits west of Lookout Valley to its intersection with Highway 58.

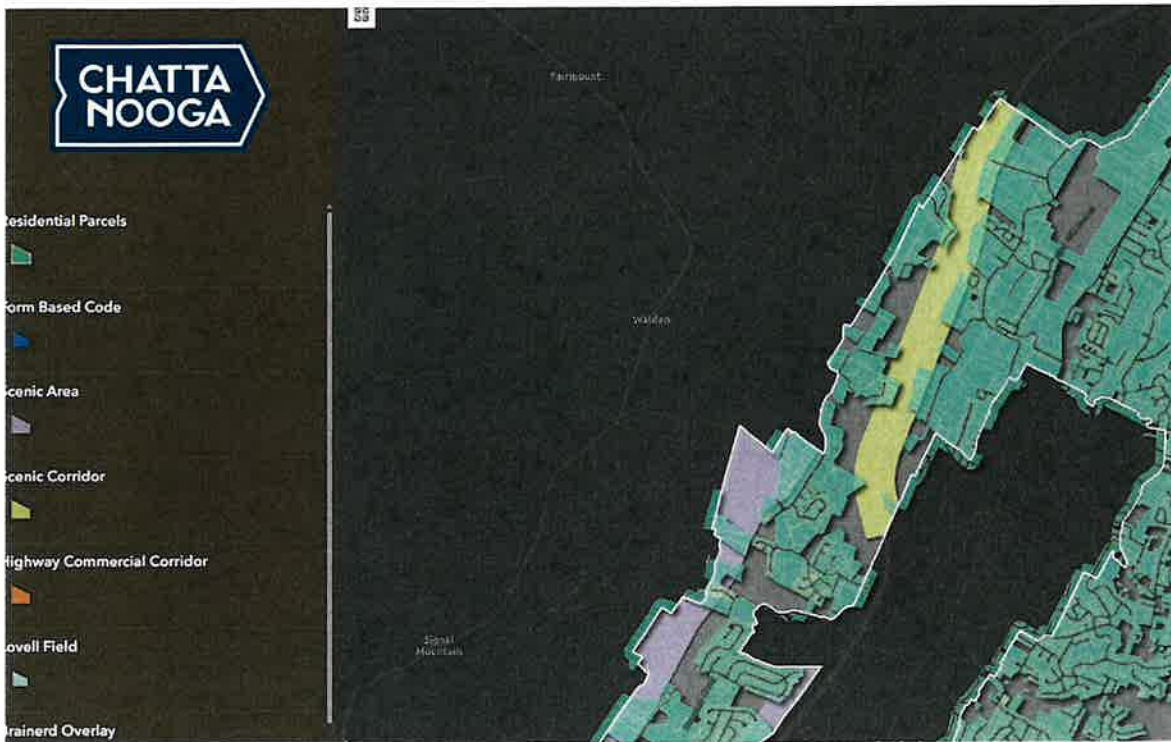
**Proposed:** None

C. **Original:** Highway 27 and any extension thereof, including the "Corridor J" roadway, from the southern bank of the Tennessee River northward to the northernmost Chattanooga city limits to the extent that said extension is within the city limits of Chattanooga.

**Proposed Change:** Highway 27 ("Corridor J") and any extensions thereof, beginning at the southern bank of the Tennessee River and extending northward to the northernmost city limits of Chattanooga, limited to those portions of the roadway located within the municipal boundaries of the City of Chattanooga.

**Reason for Change:** Corridor J is not clear and may no longer be relevant. It's an old TDOT reference.

**Location - Corridor is in Yellow**



- D. **Original:** The Tennessee River from Chickamauga Dam downstream to the city limits.  
**Proposed Change:** None
- E. **Original:** Within the area of Veterans Bridge and its approaches beginning at the midpoint of the intersection of Barton Avenue and Crewdson Street and extending southward four hundred seventy-five (475) feet on either side of the centerline of Barton Avenue across Veterans Bridge at the Tennessee River to its intersection with Fourth Street.  
**Proposed Change:** None
- F. **Original:** Along Interstates 24 and 75 from one hundred fifty (150) feet east of Dodds Avenue eastward to the city limits as they now exist or may hereafter be expanded, except for an area one thousand three hundred twenty (1,320) feet in either direction along Interstate 75 from the intersection with Lee Highway (U.S. Highway 11 and 64) at Ooltewah and State Route 2 (Bonny Oaks Drive).  
**Proposed Change:** None
- G. **Original:** The Dupont Parkway from its north end, at the center of its intersection with Highway 153, generally south and east across Access Road and across the C.B. Robinson Bridge to the center of its intersection with Amnicola Highway, including all entrance and exit ramps thereto on the north side of Amnicola Highway.  
**Proposed Change:** None

H. **Original:** The Airport Connector Road and Shepherd Road from State Highway 153 generally southward to Airport Road.

**Proposed Change:** None

I. **Original:** Shallowford Road from its intersection with Gunbarrel Road to the intersection of Jenkins Road.

**Proposed Change:** Delete

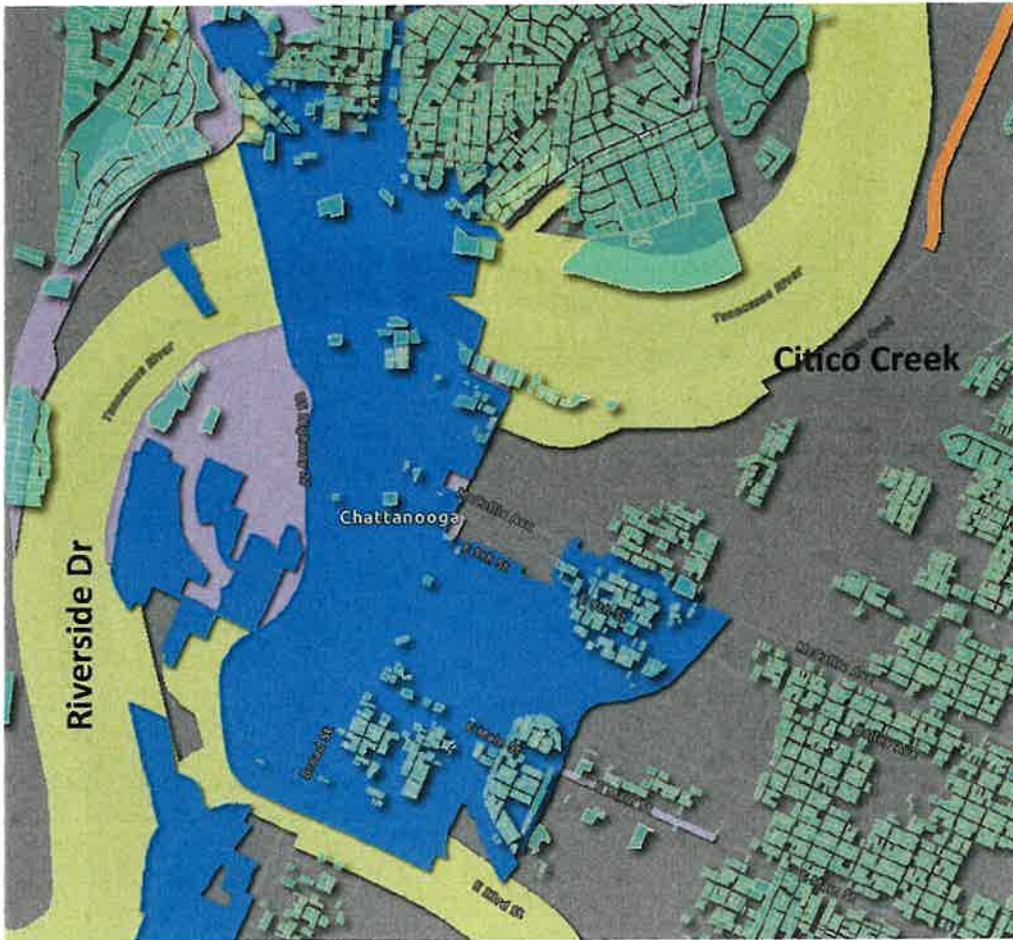
**Reason for Change:** Duplicative. Item "S" lists Shallowford Road in its entirety so it does not need to be listed twice.

J. **Original:** Riverside Drive generally northwardly and eastwardly from its intersection with Broad Street to the point where it crosses Citico Creek.

**Proposed Change:** Riverside Drive generally northwardly and eastwardly from its intersection with Broad Street **where it becomes W 20th Street** to the point where it crosses Citico Creek, **east of Amincola Highway.**

**Reason for Change:** Provides more directional detail.

**Location - Corridor is in Yellow**



K. **Original:** All of Jenkins Road lying within the Chattanooga City limits.  
**Proposed Change:** None

L. **Original:** East Brainerd Road from its intersection with Concord Road and extending South and East to the City limits.

**Proposed Change:** East Brainerd Road from its intersection with N. Concord Road and extending South and East to the City limits.

**Reason for Change:** The road name is incorrect.

**Location - Corridor is in Yellow**



- M. **Original:** Highway 153 from its intersection with Amnicola Highway to its intersection with Hamill Road.  
**Proposed Change:** None
- N. **Original:** Cassandra Smith Road from its intersection with Hixson Pike to its intersection with Hamill Road.  
**Proposed Change:** None
- O. **Original:** Hamill Road from its intersection with Hixson Pike to Big Ridge Road.  
**Proposed Change:** None
- P. **Original:** Highway 153 from its intersection with Grubb Road going north to the City limits.  
**Proposed Change:** None
- Q. **Original:** Hickory Valley Road in its entirety;  
**Proposed Change:** Hickory Valley Road in its entirety.

**Reason for Change:** The first half of the list ends the sentence with a period and the second half ends with a semi-colon.

- R. **Original:** Jersey Pike in its entirety;  
**Proposed Change:** Jersey Pike in its entirety.  
**Reason for Change:** The first half of the list ends the sentence with a period and the second half ends with a semi-colon.
- S. **Original:** Shallowford Road in its entirety;  
**Proposed Change:** Shallowford Road in its entirety.  
**Reason for Change:** The first half of the list ends the sentence with a period and the second half ends with a semi-colon.
- T. **Original:** Bonny Oaks Drive from its intersection with Highway 58 eastwardly to its intersection with Old Lee Highway at Interstate 75;  
**Proposed Change:** Bonny Oaks Drive from its intersection with Highway 58 eastwardly to its intersection with Old Lee Highway at Interstate 75.  
**Reason for Change:** The first half of the list ends the sentence with a period and the second half ends with a semi-colon.
- U. **Original:** Highway 58 from its intersection with Jersey Pike northwardly to the City limits;  
**Proposed Change:** Highway 58 from its intersection with Jersey Pike northwardly to the City limits.  
**Reason for Change:** The first half of the list ends the sentence with a period and the second half ends with a semi-colon.
- V. **Original:** All of Harrison-Ooltewah Road lying within the Chattanooga City limits;  
**Proposed Change:** All of Harrison-Ooltewah Road lying within the Chattanooga City limits.  
**Reason for Change:** The first half of the list ends the sentence with a period and the second half ends with a semi-colon.
- W. **Original:** All of Old Lee Highway lying within the Chattanooga City limits;  
**Proposed Change:** All of Old Lee Highway lying within the Chattanooga City limits.  
**Reason for Change:** The first half of the list ends the sentence with a period and the second half ends with a semi-colon.
- X. **Original:** All of Old Cleveland Pike lying within the Chattanooga City limits;  
**Proposed Change:** All of Old Cleveland Pike lying within the Chattanooga City limits.  
**Reason for Change:** The first half of the list ends the sentence with a period and the second half ends with a semi-colon.
- Y. **Original:** All of Hunter Road lying within the Chattanooga City limits;  
**Proposed Change:** All of Hunter Road lying within the Chattanooga City limits.  
**Reason for Change:** The first half of the list ends the sentence with a period and the second half ends with a semi-colon.

Z. **Original:** All of Mountain View Road lying with the Chattanooga City limits;  
**Proposed Change:** All of Mountain View Road lying **within** the Chattanooga City limits.  
**Reason for Change:** Grammar errors

AA. **Original:** All of Snow Hill Road lying within the Chattanooga City limits;  
**Proposed Change:** All of Snow Hill Road lying within the Chattanooga City limits.  
**Reason for Change:** The first half of the list ends the sentence with a period and the second half ends with a semi-colon.

BB. **Original:** All of Ooltewah-Georgetown Road lying within the Chattanooga City limits;  
**Proposed Change:** All of Ooltewah-Georgetown Road lying within the Chattanooga City limits.  
**Reason for Change:** The first half of the list ends the sentence with a period and the second half ends with a semi-colon.

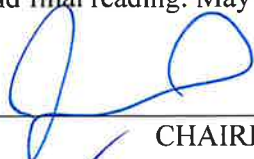
CC. **Original:** Lee Highway from its intersection with Hunter Road southeastwardly to the City limits towards Bradley County; and  
**Proposed Change:** Lee Highway from its intersection with Hunter Road southeastwardly to the City limits towards Bradley County.  
**Reason for Change:** The first half of the list ends the sentence with a period and the second half ends with a semi-colon.

DD. **Original:** Apison Pike.  
**Proposed Change:** None

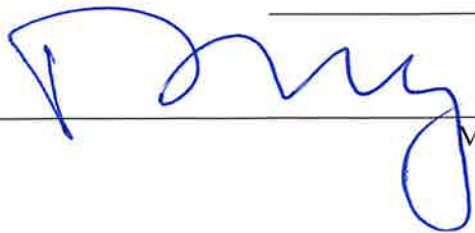
SECTION 2. BE IT FURTHER ORDAINED, That this Ordinance shall take effect two

(2) weeks from and after its passage.

Passed on second and final reading: May 26, 2026

  
\_\_\_\_\_  
CHAIRPERSON

APPROVED:  DISAPPROVED:

  
\_\_\_\_\_  
MAYOR